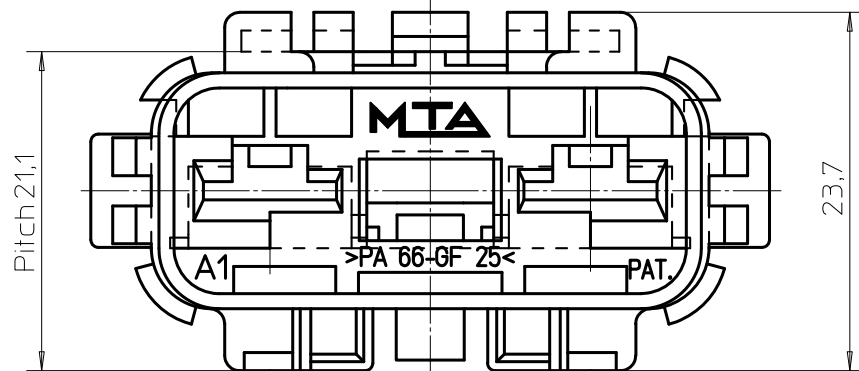
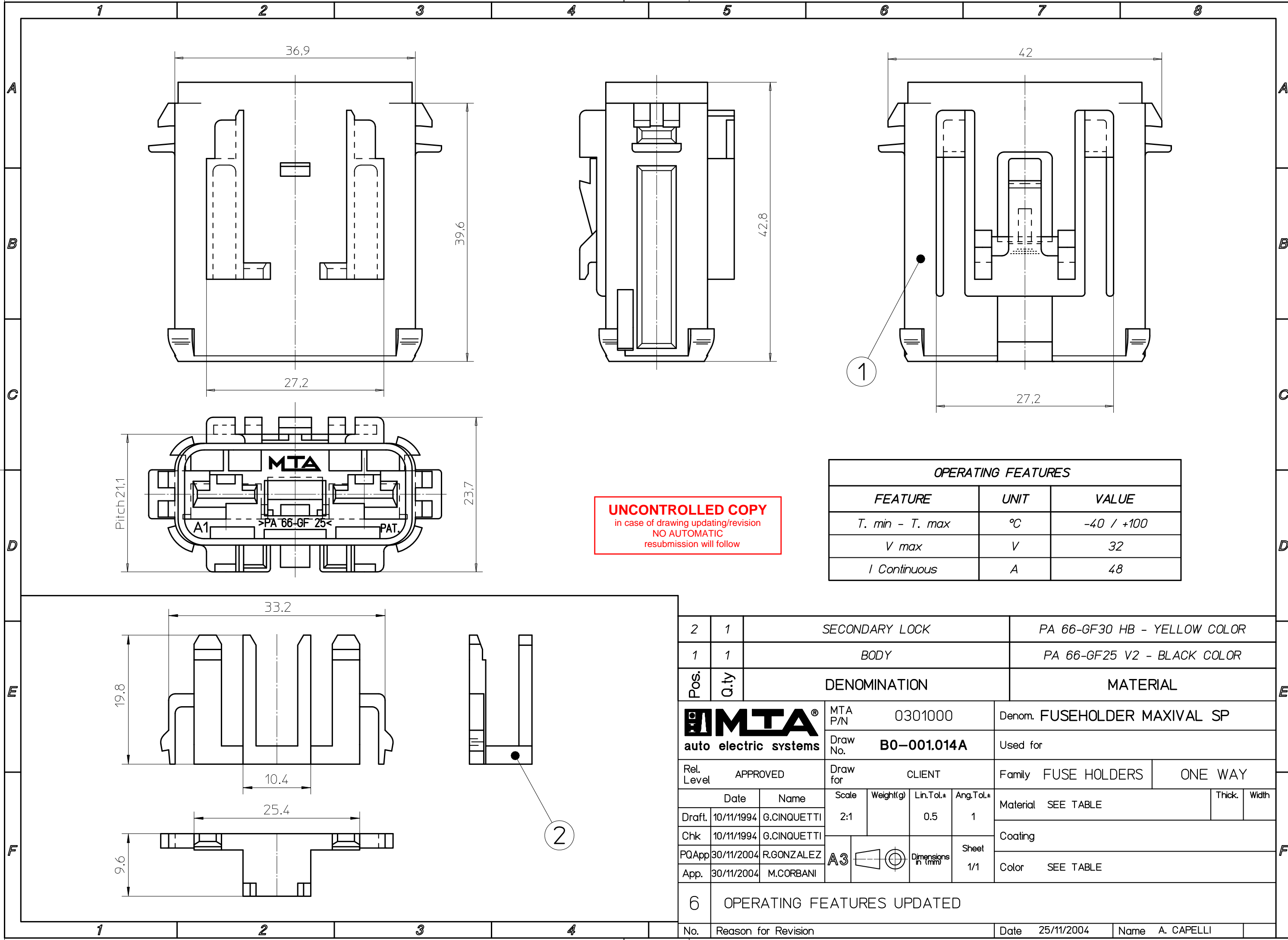


All proprietary rights reserved by MECCANOTECNICA CODOGNESE S.p.A. - This drawing shall not be reproduced, or in any way utilized, for the manufacture of the component or unit herein illustrated and must not be released to other parties, without written consent. Any infringement will be legally pursued.



UNCONTROLLED COPY
 in case of drawing updating/revision
 NO AUTOMATIC
 resubmission will follow

OPERATING FEATURES		
FEATURE	UNIT	VALUE
<i>T. min - T. max</i>	°C	-40 / +100
<i>V max</i>	V	32
<i>I Continuous</i>	A	48

2	1	SECONDARY LOCK	PA 66-GF30 HB - YELLOW COLOR		
1	1	BODY	PA 66-GF25 V2 - BLACK COLOR		
Pos.	Q.ty	DENOMINATION	MATERIAL		
		MTA auto electric systems	MTA P/N 0301000	Denom. FUSEHOLDER MAXIVAL SP	
		APPROVED	Draw No. B0-001.014A	Used for	
		Date	Name	Draw for	CLIENT
		Scale	Weight(g)	Lin.Tol.±	Ang.Tol.±
Draft.	10/11/1994	G.CINQUETTI	2:1	0.5	1
Chk.	10/11/1994	G.CINQUETTI			
PQApp.	30/11/2004	R.GONZALEZ	A3	Sheet	1/1
App.	30/11/2004	M.CORBANI	Color SEE TABLE		
6 OPERATING FEATURES UPDATED					
No.	Reason for Revision			Date	Name
				25/11/2004	A. CAPELLI