

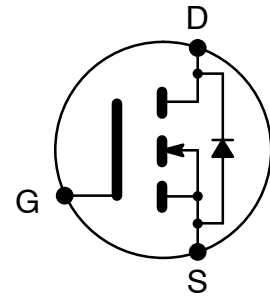


ELECTRONICS, INC.  
 44 FARRAND STREET  
 BLOOMFIELD, NJ 07003  
 (973) 748-5089  
<http://www.nteinc.com>

**NTE2923  
 MOSFET  
 N-Ch, Enhancement Mode  
 High Speed Switch  
 TO247 Type Package**

**Features:**

- Dynamic dv/dt Rating
- Repetitive Avalanche Rated
- Isolated Central Mounting Hole
- Fast Switching
- Ease of Paralleling
- Simple Drive Requirements



**Absolute Maximum Ratings:**

Continuous Drain Current ( $V_{GS} = 10V$ ), $I_D$	
$T_C = +25^\circ C$ .....	8.8A
$T_C = +100^\circ C$ .....	5.6A
Pulsed Drain Current (Note 1), $I_{DM}$ .....	35A
Power Dissipation ( $T_C = +25^\circ C$ ), $P_D$ .....	150W
Derate Linearly Above $25^\circ C$ .....	1.2W/ $^\circ C$
Gate-to-Source Voltage, $V_{GS}$ .....	$\pm 20$
Single Pulse Avalanche Energy (Note 2), $E_{AS}$ .....	480mJ
Avalanche Current (Note 1), $I_{AR}$ .....	8.8A
Repetitive Avalanche Energy (Note 1), $E_{AR}$ .....	15mJ
Peak Diode Recovery dv/dt (Note 3), dv/dt .....	3.5V/ns
Operating Junction Temperature Range, $T_J$ .....	$-55^\circ$ to $+150^\circ C$
Storage Temperature Range, $T_{stg}$ .....	$-55^\circ$ to $+150^\circ C$
Lead Temperature (During Soldering, 1.6mm from case for 10sec), $T_L$ .....	$+300^\circ C$
Mounting Torque (6-32 or M3 Screw) .....	10 lbf•in (1.1N•m)
Thermal Resistance, Junction-to-Case, $R_{thJC}$ .....	0.83 $^\circ C/W$
Thermal Resistance, Junction-to-Ambient, $R_{thJA}$ .....	40 $^\circ C/W$
Typical Thermal Resistance, Case-to-Sink (Flat, Greased Surface), $R_{thCS}$ .....	0.24 $^\circ C/W$

Note 1. Repetitive rating; pulse width limited by maximum junction temperature.

Note 2.  $V_{DD} = 50V$ , starting  $T_J = +25^\circ C$ ,  $L = 11mH$ ,  $R_G = 25\pm$ ,  $I_{AS} = 8.8A$

Note 3.  $I_{SD} \leq 8.8A$ ,  $di/dt \leq 100A/\mu s$ ,  $V_{DD} \leq 500V$ ,  $T_J \leq +150^\circ C$

Note 4. Pules Width  $\leq 300\mu\text{s}$ , Duty Cycle  $\leq 2\%$ .

**Electrical Characteristics:** ( $T_J = +25^\circ\text{C}$  unless otherwise specified)

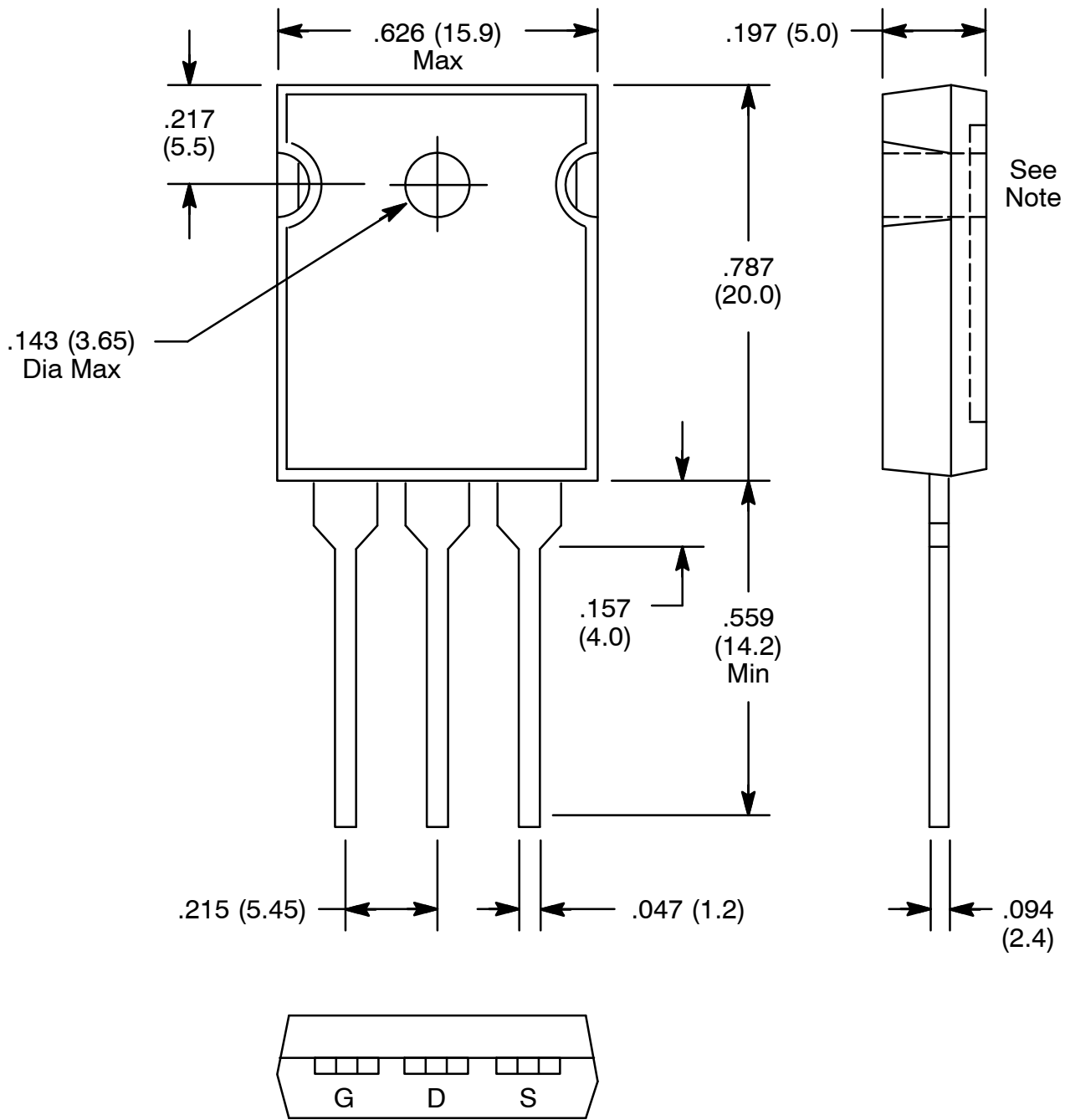
Parameter	Symbol	Test Conditions	Min	Typ	Max	Unit
Drain-to-Source Breakdown Voltage	$V_{(BR)DSS}$	$V_{GS} = 0V, I_D = 250\mu\text{A}$	500	-	-	V
Breakdown Voltage Temp. Coefficient	$\frac{V_{(BR)DSS}}{T_J}$	Reference to $+25^\circ\text{C}$ , $I_D = 1\text{mA}$	-	0.78	-	$\text{V}/^\circ\text{C}$
Static Drain-to-Source On-Resistance	$R_{DS(on)}$	$V_{GS} = 10V, I_D = 5.3\text{A}$ , Note 4	-	-	0.85	$\pm$
Gate Threshold Voltage	$V_{GS(th)}$	$V_{DS} = V_{GS}, I_D = 250\mu\text{A}$	2.0	-	4.0	V
Forward Transconductance	$g_{fs}$	$V_{DS} = 50V, I_D = 5.3\text{A}$ , Note 4	5.3	-	-	mhos
Drain-to-Source Leakage Current	$I_{DSS}$	$V_{DS} = 500V, V_{GS} = 0V$	-	-	25	$\leq\text{A}$
		$V_{DS} = 400V, V_{GS} = 0V, T_J = +125^\circ\text{C}$	-	-	250	$\leq\text{A}$
Gate-to-Source Forward Leakage	$I_{GSS}$	$V_{GS} = 20V$	-	-	100	nA
Gate-to-Source Reverse Leakage	$I_{GSS}$	$V_{GS} = -20V$	-	-	-100	nA
Total Gate Charge	$Q_g$	$I_D = 8\text{A}, V_{DS} = 400V, V_{GS} = 10V$ , Note 4	-	-	63	nC
Gate-to-Source Charge	$Q_{gs}$		-	-	11	nC
Gate-to-Drain ("Miller") Charge	$Q_{gd}$		-	-	30	nC
Turn-On Delay Time	$t_{d(on)}$	$V_{DD} = 250V, I_D = 8\text{A}, R_G = 9.1\pm, R_D = 31\pm$ , Note 4	-	14	-	ns
Rise Time	$t_r$		-	23	-	ns
Turn-Off Delay Time	$t_{d(off)}$		-	49	-	ns
Fall Time	$t_f$		-	20	-	ns
Internal Drain Inductance	$L_D$	Between lead, .250in. (6.0) mm from package and center of die contact	-	5.0	-	nH
Internal Source Inductance	$L_S$		-	13	-	nH
Input Capacitance	$C_{iss}$	$V_{GS} = 0V, V_{DS} = 25V, f = 1\text{MHz}$	-	1300	-	pF
Output Capacitance	$C_{oss}$		-	310	-	pF
Reverse Transfer Capacitance	$C_{riss}$		-	120	-	pF

**Source-Drain Ratings and Characteristics:**

Parameter	Symbol	Test Conditions	Min	Typ	Max	Unit
Continuous Source Current (Body Diode)	$I_S$		-	-	8.8	A
Pulsed Source Current (Body Diode)	$I_{SM}$	Note 1	-	-	35	A
Diode Forward Voltage	$V_{SD}$	$T_J = +25^\circ\text{C}, I_S = 8.8\text{A}, V_{GS} = 0V$ , Note 4	-	-	2.0	V
Reverse Recovery Time	$t_{rr}$	$T_J = +25^\circ\text{C}, I_F = 8\text{A}$ , $di/dt = 100\text{A}/\mu\text{s}$ , Note 4	-	460	970	ns
Reverse Recovery Charge	$Q_{rr}$		-	3.5	7.6	$\leq\text{C}$
Forward Turn-On Time	$t_{on}$	Intrinsic turn-on time is negligible (turn-on is dominated by $L_S + L_D$ )				

Note 1. Repetitive rating; pulse width limited by maximum junction temperature.

Note 4. Pulse width  $\leq 300\mu\text{s}$ ; duty cycle  $\leq 2\%$ .



TO247

**Note:** Drain connected to metal part of mounting surface.