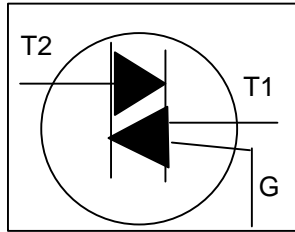
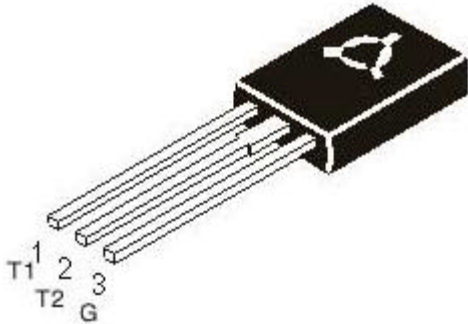


**TRIAC**

**BT134**

**TO-126  
Plastic Package**



For use in high bidirectional transient and blocking voltage applications, and for high thermal cycling performance. Typical Application include Motor Control, Industrial and Domestic Lighting, Heating and Static Switching.

**ABSOLUTE MAXIMUM RATINGS**

PARAMETER	SYMBOL	TEST CONDITION	VALUE	UNIT
Repetitive Peak Off State Voltage	$*V_{DRM}$		600	V
RMS on State Current	$I_T (RMS)$	full sine wave, $T_{mb} \leq 107^\circ C$	4.0	A
Non Repetitive Peak on State Current	$I_{TSM}$	full sine wave, $T_J = 25^\circ C$ prior to Surge		
		$t = 20ms$	25	A
		$t = 16.7ms$	27	A
$I^2t$ for Fusing	$I^2t$	$t = 10ms$	3.1	$A^2s$
Repetitive Rate of Rise of on State Current After Triggering	$di_T/dt$	$I_{TM} = 6A, I_G = 0.2A,$ $di_G/dt = 0.2A/\mu s$		
		T2+ G+	50	A/ $\mu s$
		T2+ G-	50	A/ $\mu s$
		T2- G-	50	A/ $\mu s$
		T2- G+	10	A/ $\mu s$
Peak Gate Current	$I_{GM}$		2.0	A
Peak Gate Voltage	$V_{GM}$		5.0	V
Peak Gate Power	$P_{GM}$		5.0	W
Average Gate Power	$P_G (AV)$	Over any 20ms period	0.5	W
Storage Temperature	$T_{stg}$		- 40 to +150	$^\circ C$
Operating Junction Temperature	$T_j$		125	$^\circ C$

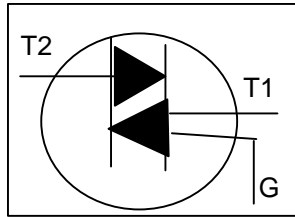
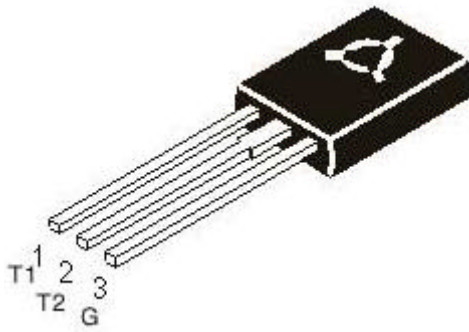
\*The rate of rise of current should not exceed 3A/ms

**THERMAL RESISTANCE**

Junction to Mounting Base	$R_{th (j-mb)}$	full cycle	3.0	K/W
		half cycle	3.7	K/W
Junction to Ambient (typical)	$R_{th (j-a)}$	in free air	100 (Typ)	K/W

**ELECTRICAL CHARACTERISTICS ( $T_J = 25^\circ C$  unless specified otherwise)**

PARAMETER	SYMBOL	TEST CONDITION	MIN	MAX	UNIT
Gate Trigger Current	$I_{GT}$	$V_D = 12V, I_T = 0.1A$			
		T2+ G+		35	mA
		T2+ G-		35	mA
		T2- G-		35	mA
		T2- G+		70	mA



**ELECTRICAL CHARACTERISTICS (T<sub>J</sub>=25°C unless specified otherwise)**

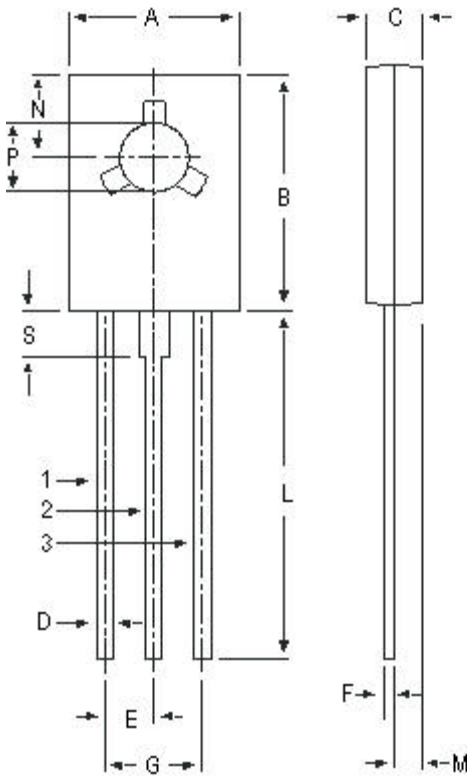
PARAMETER	SYMBOL	TEST CONDITION	MIN	MAX	UNIT
Latching Current	I <sub>L</sub>	V <sub>D</sub> =12V, I <sub>GT</sub> =0.1A			
		T2+ G+		20	mA
		T2+ G-		30	mA
		T2- G-		20	mA
		T2- G+		30	mA
Holding Current	I <sub>H</sub>	V <sub>D</sub> =12V, I <sub>GT</sub> =0.1A		15	mA
On State Voltage	V <sub>T</sub>	I <sub>T</sub> =5A		1.7	V
Gate Trigger Voltage	V <sub>GT</sub>	V <sub>D</sub> =12V, I <sub>T</sub> =0.1A		1.5	V
		V <sub>D</sub> =400V, I <sub>T</sub> =0.1A, T <sub>J</sub> =125°C	0.25		V
Off State Leakage Current	I <sub>D</sub>	V <sub>D</sub> =max, V <sub>DRM</sub> =max, T <sub>J</sub> =125°C		0.5	mA

**DYNAMIC CHARACTERISTICS (T<sub>J</sub>=25°C unless specified otherwise)**

PARAMETER	SYMBOL	TEST CONDITION	MIN	TYP	MAX	UNIT
Critical Rate of Rise of off State Voltage	dV <sub>D</sub> /dt	V <sub>DM</sub> =67% V <sub>DRM</sub> max, T <sub>J</sub> =125°C, exponential waveform, gate open circuit	100	250		V/μs
Critical Rate of Change of Commutating Voltage	dV <sub>com</sub> /dt	V <sub>DM</sub> =400V, T <sub>J</sub> =95°C, I <sub>T(RMS)</sub> =4A, dI <sub>com</sub> /dt=1.8A/ms, gate open circuit		50		V/μs
Gate Controlled turn on time	t <sub>gt</sub>	I <sub>TM</sub> =6A, V <sub>D</sub> =V <sub>DRM</sub> max, I <sub>G</sub> =0.1A, dI <sub>G</sub> /dt=5A/μs		2.0		μs

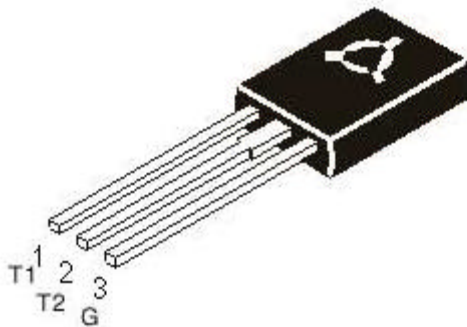
BT134Rev010103E

TO-126 Plastic Package



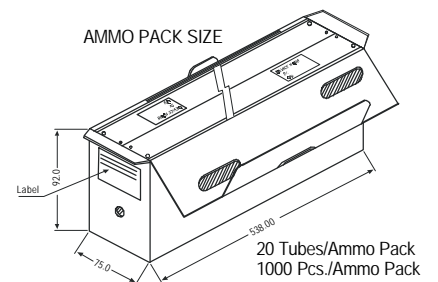
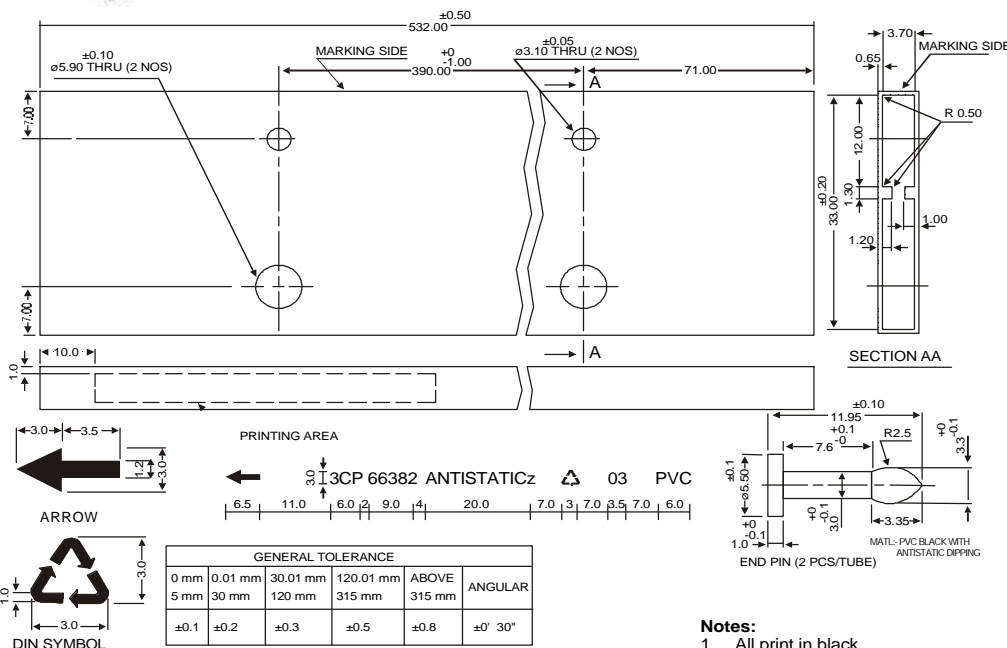
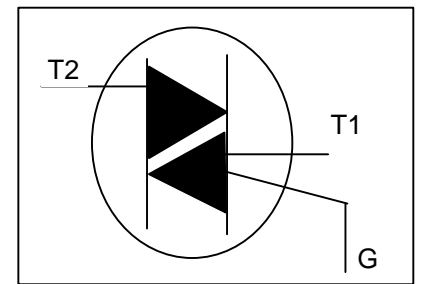
DIM	MIN	MAX
A	7.4	7.8
B	10.5	10.8
C	2.4	2.7
D	0.7	0.9
E	2.25 TYP.	
F	0.49	0.75
G	4.5 TYP.	
L	15.7 TYP.	
M	1.27 TYP.	
N	3.75 TYP.	
P	3.0	3.2
S	2.5 TYP.	

All dimensions in mm.



Pin Configuration

1. Main Terminal 1
2. Main Terminal 2
3. Gate



GENERAL TOLERANCE					
0 mm	0.01 mm	30.01 mm	120.01 mm	ABOVE 315 mm	ANGULAR
5 mm	30 mm	120 mm	315 mm	315 mm	
±0.1	±0.2	±0.3	±0.5	±0.8	±0° 30"

All dimensions in mm

- Notes:
1. All print in black.
  2. All text in Helvetia medium font.

Packing Detail

PACKAGE	STANDARD PACK		INNER CARTON BOX		OUTER CARTON BOX		
	Details	Net Weight/Qty	Size	Qty	Size	Qty	Gr Wt
TO-126 Bulk	500 pcs/polybag	340 gm/500 pcs	3" x 7.5" x 7.5"	2K	17" x 15" x 13.5"	32K	31 kgs
TO-126 Tube	50 pcs/tube	73 gm/50 pcs	3" x 3.7" x 21.5"	1K	19" x 19" x 19"	10K	15 kgs

### **Disclaimer**

The product information and the selection guides facilitate selection of the CDIL's Discrete Semiconductor Device(s) best suited for application in your product(s) as per your requirement. It is recommended that you completely review our Data Sheet(s) so as to confirm that the Device(s) meet functionality parameters for your application. The information furnished in the Data Sheet and on the CDIL Web Site/CD are believed to be accurate and reliable. CDIL however, does not assume responsibility for inaccuracies or incomplete information. Furthermore, CDIL does not assume liability whatsoever, arising out of the application or use of any CDIL product; neither does it convey any license under its patent rights nor rights of others. These products are not designed for use in life saving/support appliances or systems. CDIL customers selling these products (either as individual Discrete Semiconductor Devices or incorporated in their end products), in any life saving/support appliances or systems or applications do so at their own risk and CDIL will not be responsible for any damages resulting from such sale(s).

CDIL strives for continuous improvement and reserves the right to change the specifications of its products without prior notice.



CDIL is a registered Trademark of  
Continental Device India Limited

C-120 Naraina Industrial Area, New Delhi 110 028, India.  
Telephone + 91-11-2579 6150, 5141 1112 Fax + 91-11-2579 5290, 5141 1119  
email@cdil.com www.cdilsemi.com