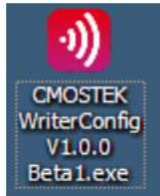


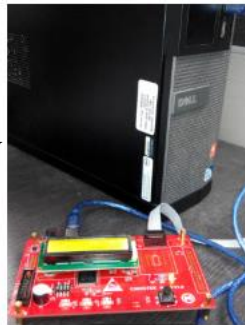
CMOSTEK

CMOSTEK Writer V1.0 Simple operation guide

1. Set up CMOSTEK WriterConfig V1.0.0 Beta.exe on the computer;



2. connect the Writer and the computer by USB:

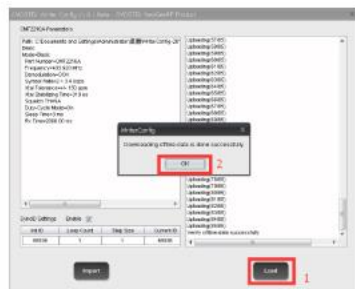


3. open WriterConfig.exe, then import the burning configuration file which is exp extension ;



5. connect the Writer burn interface to the burn jig, , notice to plus 6-12V DC voltage or supply power by USB port (5V), plug the power required by the reset Writer;

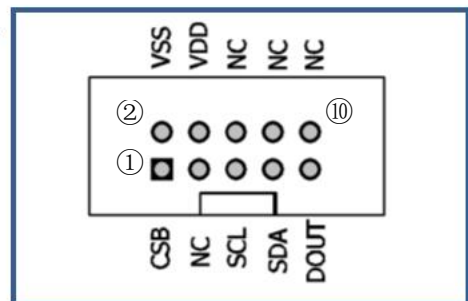
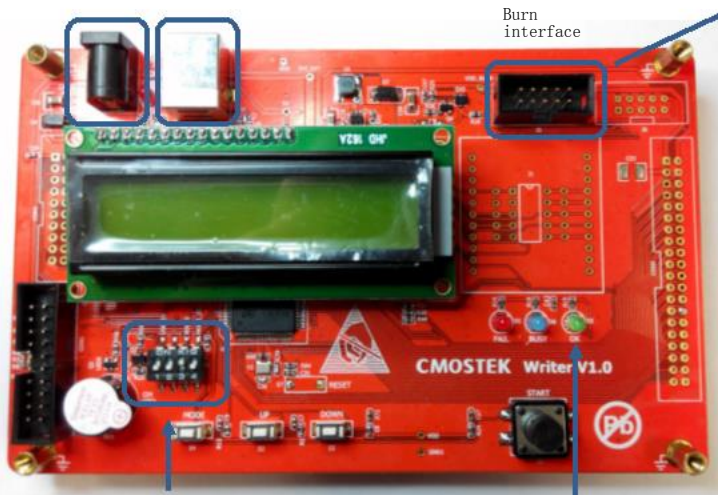
4. click Load, wait 10 seconds, and click OK after the successful completion of the import process;



ID Increment Enable

The ID being burned in, ,10 band

6V -12V DC input USB interface (5V)



DIP switch settings: Notice must be fixed for 0010



Status Pilot Lamp

Power Pilot Lamp



The import modul number

The verifying state of importing configuration CRC

Burn counter, incremented by one after success

The ID to be burned in, , automatically change after a successful burn, hexadecimal

| Pin Number | Pin Functions | |
|------------|-----------------------|-----------------------|
| | CMT211xA/ CMT215xA | CMT221xA/ CMT225xA |
| 1 | NC | CSB |
| 2 | GND | GND |
| 3 | NC | |
| 4 | | |
| 5 | | |
| 6 | | |
| 7 | DATA | SDA |
| 8 | NC | NC |
| 9 | NC | NC |
| 10 | NC | NC |

After connecting the burning product properly, burning starts automatically, status pilot lamp lights and a bound will sound prompts after a successful burn. Next to burn, Note: the same configuration products can not be burned repeatedly .