

Using the Configurable Logic Cell (CLC) to Interface a PIC16F1509 and WS2811 LED Driver

*Author: Joseph Julicher
Microchip Technology Inc.*

INTRODUCTION

The Configurable Logic Cell (CLC) peripheral in the PIC16F1509 device is a powerful way to create custom interfaces that would otherwise be very difficult. One example is the single-wire PWM signal, used by the WS2811 LEDs, well known in LED video display systems. This application note will provide a simple demonstration of a WS2811 LED Strip driver.

The serial protocol used by the WS2811 has three states. State 1 is a logical '0', state 2 is a logical '1' and state 3 is a latch. The data is accepted and used to drive the LED intensity. State 1 is a high output for 500 ns \pm 150 ns, followed by 2000 ns \pm 150 ns. State 2 is a high output for 120 ns \pm 150 ns, followed by a low output for 130 ns \pm 150 ns. State 3 is a low output for more than 50 μ s. There is a fast mode that reduces all of these times (except for state 3) by a factor of two, so that more LEDs can be driven in the same period of time.

Driving an I/O pin in software could create this serial protocol, but this creates two problems:

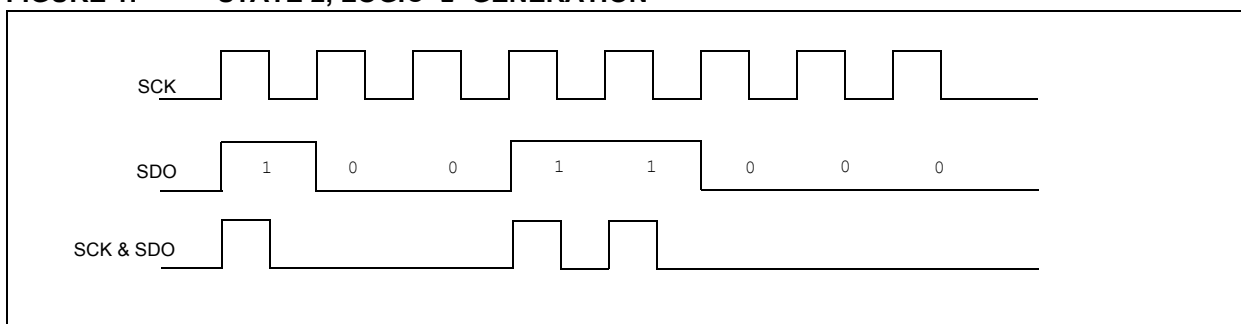
1. 100% of the CPU is used for the entire duration of the LED string update. (15.3 ms for 256 LEDs at the low rate).
2. Very little time is allowed to decide the color for the next LED.

The ideal condition is to create a custom serial communications peripheral to transmit entire bytes in the correct format. For more information see the CLC chapter in the PIC16F1509 data sheet, "20-Pin Flash, 8-Bit Microcontrollers with nanoWatt XLP Technology" (DS41609).

CUSTOM PERIPHERAL

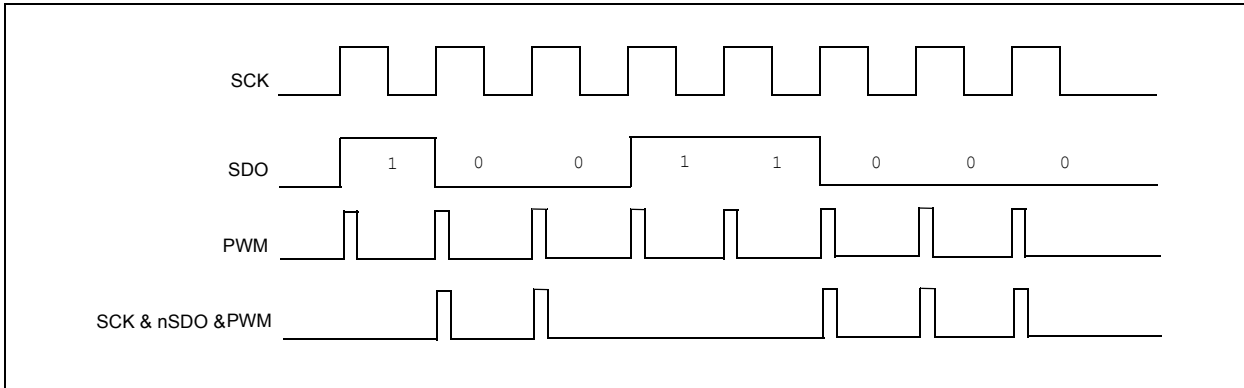
The CLC connects to a variety of peripherals in the PIC16F1509, including the MSSP. Because the MSSP can shift out eight bits at a time, this is the perfect starting point for this new peripheral. Looking at the MSSP output waveforms, [Figure 1](#) illustrates the following:

FIGURE 1: STATE 2, LOGIC '1' GENERATION



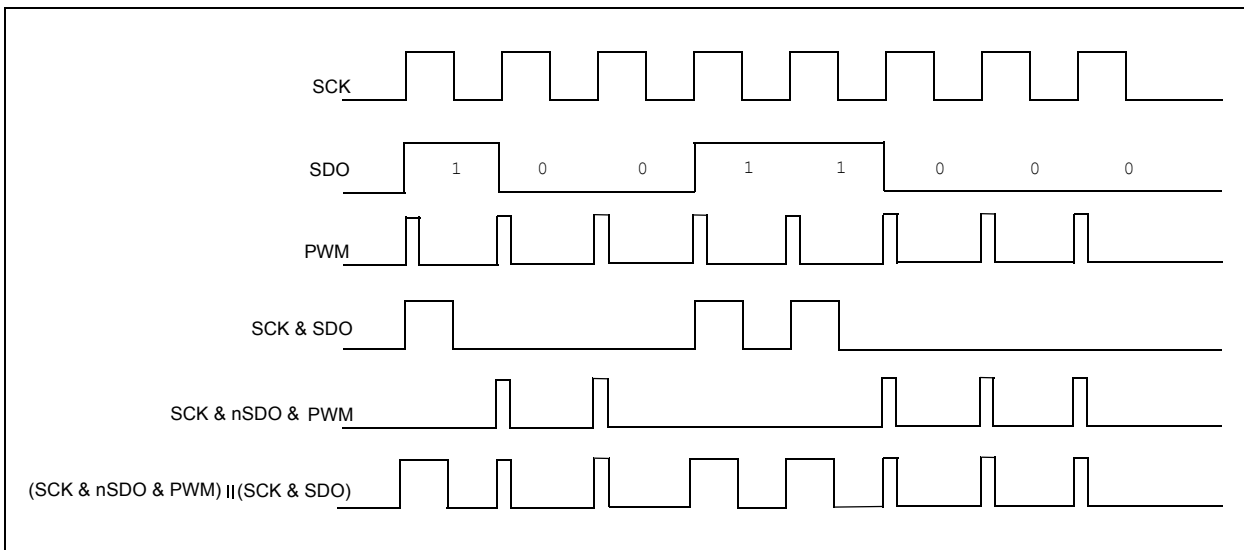
If SCK and SDO are simply combined with AND, then the logic '1' (state 2) is covered. In order to create the shorter logic '0' (state 1) pulse, another signal is needed. If PWM is included as a short pulse generator, the following signals are obtained (see [Figure 2](#)).

FIGURE 2: STATE 1, LOGIC '0' GENERATION



When both logic '0' and logic '1' are obtained, they need to be 'ORed' together to produce the desired waveform (see [Figure 3](#)).

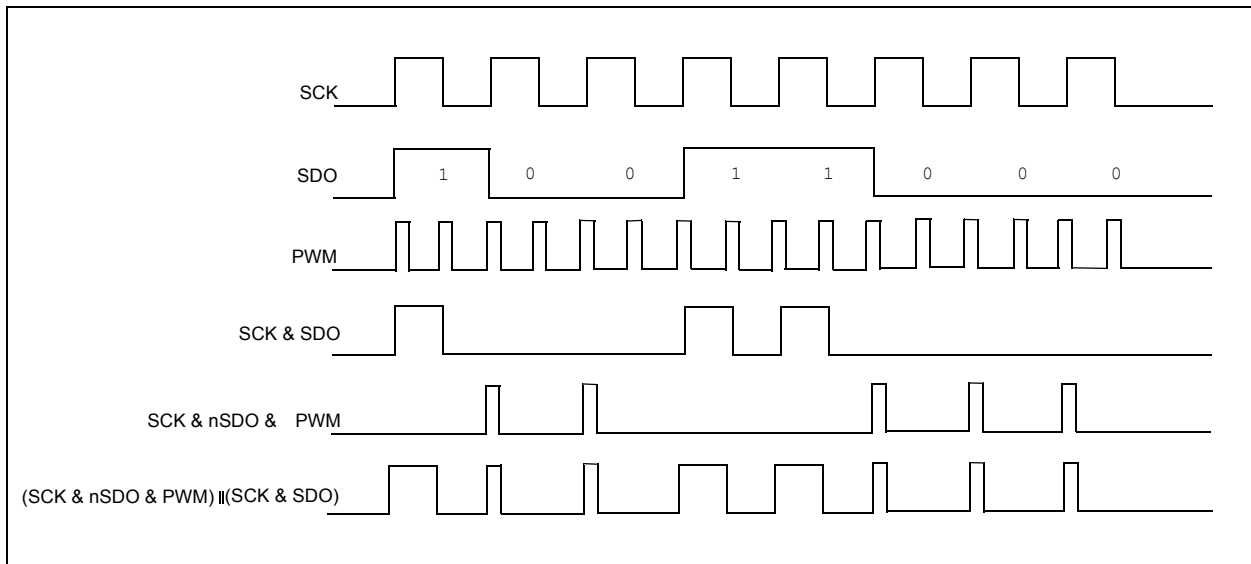
FIGURE 3: LOGIC '0' AND '1' GENERATION



[Figure 3](#) appears to be the correct waveform, but there is still one issue to be resolved. How can the PWM and the MSSP be synchronized so that the rising edge of the PWM pulse matches the start of a data bit? It turns out the MSSP can be set to a baud rate of $\frac{1}{2}$ the TMR2 period, and the PWM period can be one TMR2 period.

Taking into consideration this new information, [Figure 2](#) and [Figure 3](#) above are incorrect. The new combined waveform can be seen in [Figure 4](#):

FIGURE 4: FINAL WAVEFORMS



Note that the only difference is double the number of PWM pulses, but none of them has any effect because they occur while the SCK signal is low.

IMPLEMENTATION

To create the final configuration, the layout of the CLC peripherals in PIC16F1509 has to be studied.

TABLE 1: CLCx DATA INPUT SELECTION

Data Input	lxd1 D1S	lxd2 D1S	lxd3 D1S	lxd4 D1S	CLC 1	CLC 2	CLC 3	CLC 4
CLCxIN0	000	—	—	100	CLC1IN0	CLC2IN0	CLC3IN0	CLC4IN0
CLCxIN1	001	—	—	101	CLC1IN1	CLC2IN1	CLC3IN1	CLC4IN1
CLCxIN2	010	—	—	110	SYNCC1OUT	SYNCC1OUT	SYNCC1OUT	SYNCC1OUT
CLCxIN3	011	—	—	111	SYNCC2OUT	SYNCC2OUT	SYNCC2OUT	SYNCC2OUT
CLCxIN4	100	000	—	—	Fosc	Fosc	Fosc	Fosc
CLCxIN5	101	001	—	—	TMR0IF	TMR0IF	TMR0IF	TMR0IF
CLCxIN6	110	010	—	—	TMR1IF	TMR1IF	TMR1IF	TMR1IF
CLCxIN7	111	011	—	—	TMR2 = PR2	TMR2 = PR2	TMR2 = PR2	TMR2 = PR2
CLCxIN8	—	100	000	—	lc1_out	lc1_out	lc1_out	lc1_out
CLCxIN9	—	101	001	—	lc2_out	lc2_out	lc2_out	lc2_out
CLCxIN10	—	110	010	—	lc3_out	lc3_out	lc3_out	lc3_out
CLCxIN11	—	111	011	—	lc4_out	lc4_out	lc4_out	lc4_out
CLCxIN12	—	—	100	000	NCO1OUT	LFINTOSC	TX (EUSART)	SCK (MSSP)
CLCxIN13	—	—	101	001	HFINTOSC	ADFRC	LFINTOSC	SDO (MSSP)
CLCxIN14	—	—	110	010	PWM3OUT	PWM1OUT	PWM2OUT	PWM1OUT
CLCxIN15	—	—	111	011	PWM4OUT	PWM2OUT	PWM3OUT	PWM4OUT

The MSSP outputs are both available in CLC4. Note that PWM1 and PWM 4 are also on CLC4. However, they are all in the same logic group and only two of the four signals can be used in each group. The CLCs can be combined using LCx_OUT signals in a different logic group. The selection will be to combine PWM1OUT in CLC2 and send it to CLC4 via LC2_OUT. Therefore, the logic will be built in CLC4 as:

$LC4_OUT = (SDO \& SCK) \parallel (!SDO \& SCK \& LC2_OUT)$

and the logic in CLC2 will be:

$LC2_OUT = PWM1OUT$

The final configuration requires that the TMR2 be activated with the correct bit time:

$T2CON = 0x04$

$PR2 = (\text{bit time}/2) * (Fosc/4)$

If the slow bit time of 2.5 us and the 16 MHz internal oscillator are run, then:

$PR2 = 5.$

The PWM duty cycle must be configured for the '0' pulse width.

$PWM1DCH = pr2/3.$

The slow bit rate requires that the value be 2 for 16 MHz.

$PWM1DCH = 2.$

Configuring SSP1CON1 to use the TMR2 Period/2 as the clock results in:

$SSP1CON1 = 0x23.$

To allow the pin to output the signal, TRISC4 must be cleared to 0.

CONCLUSION

The CLC easily allows multiple peripherals in the PIC16F1509 to work together to produce a new composite peripheral that is suitable for the user's application. With a dozen lines of code, the MSSP is now a custom WS2811 driver. Please refer to the [Example A](#) for more information.

APPENDIX A:**EXAMPLE 1: SOURCE CODE**

```
void WS2811_Init(void)
{
    // Initialize PIC16(L)F1509 CLC2, CLC4, Timer2, and MSSP
    // for WS2811 signal transmission protocol
    // Loading SSP1BUF register sends that data byte out the RC4/CLC4 pin

    // PWM1 routed straight through CLC2

    CLC2GLS0 = 0x20;
    CLC2GLS1 = 0x00;
    CLC2GLS2 = 0x00;
    CLC2GLS3 = 0x00;
    CLC2SEL0 = 0x00;
    CLC2SEL1 = 0x06;
    CLC2POL  = 0x0E;
    CLC2CON  = 0x82;

    // (SPI SDO & SPI CLK) || (nSPI SDO & SPI CLK & PWM1)
    // PWM1 comes through CLC2
    CLC4GLS0 = 0x44;
    CLC4GLS1 = 0x10;
    CLC4GLS2 = 0x80;
    CLC4GLS3 = 0x20;
    CLC4SEL0 = 0x50;
    CLC4SEL1 = 0x05;
    CLC4POL  = 0x01;
    CLC4CON  = 0xC0;

    // Adjust Timer2 period for desired baud rate
    // One bit period is two Timer2 periods

    T2CON    = 0x04;
    PR2      = 5;

    // Adjust PWM1 duty cycle for desired "0" data-bit duty cycle
    // '1' data-bit duty cycle is automatically 50%

    PWM1CON  = 0xE0;
    PWM1DCH  = 2;
    PWM1DCL  = 0;

    // MSSP configured for SPI master with Timer2_Period/2 clock

    SSP1CON1 = 0x23;

    // Output on RC4/CLC4

    TRISC    &= 0xEF;
}
```

Note the following details of the code protection feature on Microchip devices:

- Microchip products meet the specification contained in their particular Microchip Data Sheet.
- Microchip believes that its family of products is one of the most secure families of its kind on the market today, when used in the intended manner and under normal conditions.
- There are dishonest and possibly illegal methods used to breach the code protection feature. All of these methods, to our knowledge, require using the Microchip products in a manner outside the operating specifications contained in Microchip's Data Sheets. Most likely, the person doing so is engaged in theft of intellectual property.
- Microchip is willing to work with the customer who is concerned about the integrity of their code.
- Neither Microchip nor any other semiconductor manufacturer can guarantee the security of their code. Code protection does not mean that we are guaranteeing the product as “unbreakable.”

Code protection is constantly evolving. We at Microchip are committed to continuously improving the code protection features of our products. Attempts to break Microchip's code protection feature may be a violation of the Digital Millennium Copyright Act. If such acts allow unauthorized access to your software or other copyrighted work, you may have a right to sue for relief under that Act.

Information contained in this publication regarding device applications and the like is provided only for your convenience and may be superseded by updates. It is your responsibility to ensure that your application meets with your specifications. MICROCHIP MAKES NO REPRESENTATIONS OR WARRANTIES OF ANY KIND WHETHER EXPRESS OR IMPLIED, WRITTEN OR ORAL, STATUTORY OR OTHERWISE, RELATED TO THE INFORMATION, INCLUDING BUT NOT LIMITED TO ITS CONDITION, QUALITY, PERFORMANCE, MERCHANTABILITY OR FITNESS FOR PURPOSE. Microchip disclaims all liability arising from this information and its use. Use of Microchip devices in life support and/or safety applications is entirely at the buyer's risk, and the buyer agrees to defend, indemnify and hold harmless Microchip from any and all damages, claims, suits, or expenses resulting from such use. No licenses are conveyed, implicitly or otherwise, under any Microchip intellectual property rights.

Trademarks

The Microchip name and logo, the Microchip logo, dsPIC, FlashFlex, KEELOQ, KEELOQ logo, MPLAB, PIC, PICmicro, PICSTART, PIC³² logo, rPIC, SST, SST Logo, SuperFlash and UNI/O are registered trademarks of Microchip Technology Incorporated in the U.S.A. and other countries.

FilterLab, Hampshire, HI-TECH C, Linear Active Thermistor, MTP, SEEVAL and The Embedded Control Solutions Company are registered trademarks of Microchip Technology Incorporated in the U.S.A.

Silicon Storage Technology is a registered trademark of Microchip Technology Inc. in other countries.


Analog-for-the-Digital Age, Application Maestro, BodyCom, chipKIT, chipKIT logo, CodeGuard, dsPICDEM, dsPICDEM.net, dsPICworks, dsSPEAK, ECAN, ECONOMONITOR, FanSense, HI-TIDE, In-Circuit Serial Programming, ICSP, Mindi, MiWi, MPASM, MPF, MPLAB Certified logo, MPLIB, MPLINK, mTouch, Omniclient Code Generation, PICC, PICC-18, PICDEM, PICDEM.net, PICkit, PICtail, REAL ICE, rLAB, Select Mode, SQI, Serial Quad I/O, Total Endurance, TSHARC, UniWinDriver, WiperLock, ZENA and Z-Scale are trademarks of Microchip Technology Incorporated in the U.S.A. and other countries.

SQTP is a service mark of Microchip Technology Incorporated in the U.S.A.

GestIC and ULPP are registered trademarks of Microchip Technology Germany II GmbH & Co. KG, a subsidiary of Microchip Technology Inc., in other countries.

All other trademarks mentioned herein are property of their respective companies.

© 2013, Microchip Technology Incorporated, Printed in the U.S.A., All Rights Reserved.

 Printed on recycled paper.

ISBN: 9781620777671

QUALITY MANAGEMENT SYSTEM
CERTIFIED BY DNV
== ISO/TS 16949 ==

Microchip received ISO/TS-16949:2009 certification for its worldwide headquarters, design and wafer fabrication facilities in Chandler and Tempe, Arizona; Gresham, Oregon and design centers in California and India. The Company's quality system processes and procedures are for its PIC[®] MCUs and dsPIC[®] DSCs, KEELOQ[®] code hopping devices, Serial EEPROMs, microperipherals, nonvolatile memory and analog products. In addition, Microchip's quality system for the design and manufacture of development systems is ISO 9001:2000 certified.



MICROCHIP

Worldwide Sales and Service

AMERICAS

Corporate Office
2355 West Chandler Blvd.
Chandler, AZ 85224-6199
Tel: 480-792-7200
Fax: 480-792-7277
Technical Support:
<http://www.microchip.com/support>
Web Address:
www.microchip.com

Atlanta
Duluth, GA
Tel: 678-957-9614
Fax: 678-957-1455

Austin, TX
Tel: 512-257-3370

Boston
Westborough, MA
Tel: 774-760-0087
Fax: 774-760-0088

Chicago
Itasca, IL
Tel: 630-285-0071
Fax: 630-285-0075

Cleveland
Independence, OH
Tel: 216-447-0464
Fax: 216-447-0643

Dallas
Addison, TX
Tel: 972-818-7423
Fax: 972-818-2924

Detroit
Novi, MI
Tel: 248-848-4000

Houston, TX
Tel: 281-894-5983

Indianapolis
Noblesville, IN
Tel: 317-773-8323
Fax: 317-773-5453

Los Angeles
Mission Viejo, CA
Tel: 949-462-9523
Fax: 949-462-9608

New York, NY
Tel: 631-435-6000

San Jose, CA
Tel: 408-735-9110

Canada - Toronto
Tel: 905-673-0699
Fax: 905-673-6509

ASIA/PACIFIC

Asia Pacific Office
Suites 3707-14, 37th Floor
Tower 6, The Gateway
Harbour City, Kowloon
Hong Kong
Tel: 852-2401-1200
Fax: 852-2401-3431

Australia - Sydney
Tel: 61-2-9868-6733
Fax: 61-2-9868-6755

China - Beijing
Tel: 86-10-8569-7000
Fax: 86-10-8528-2104

China - Chengdu
Tel: 86-28-8665-5511
Fax: 86-28-8665-7889

China - Chongqing
Tel: 86-23-8980-9588
Fax: 86-23-8980-9500

China - Hangzhou
Tel: 86-571-2819-3187
Fax: 86-571-2819-3189

China - Hong Kong SAR
Tel: 852-2943-5100
Fax: 852-2401-3431

China - Nanjing
Tel: 86-25-8473-2460
Fax: 86-25-8473-2470

China - Qingdao
Tel: 86-532-8502-7355
Fax: 86-532-8502-7205

China - Shanghai
Tel: 86-21-5407-5533
Fax: 86-21-5407-5066

China - Shenyang
Tel: 86-24-2334-2829
Fax: 86-24-2334-2393

China - Shenzhen
Tel: 86-755-8864-2200
Fax: 86-755-8203-1760

China - Wuhan
Tel: 86-27-5980-5300
Fax: 86-27-5980-5118

China - Xian
Tel: 86-29-8833-7252
Fax: 86-29-8833-7256

China - Xiamen
Tel: 86-592-2388138
Fax: 86-592-2388130

China - Zhuhai
Tel: 86-756-3210040
Fax: 86-756-3210049

ASIA/PACIFIC

India - Bangalore
Tel: 91-80-3090-4444
Fax: 91-80-3090-4123

India - New Delhi
Tel: 91-11-4160-8631
Fax: 91-11-4160-8632

India - Pune
Tel: 91-20-3019-1500

Japan - Osaka
Tel: 81-6-6152-7160
Fax: 81-6-6152-9310

Japan - Tokyo
Tel: 81-3-6880-3770
Fax: 81-3-6880-3771

Korea - Daegu
Tel: 82-53-744-4301
Fax: 82-53-744-4302

Korea - Seoul
Tel: 82-2-554-7200
Fax: 82-2-558-5932 or
82-2-558-5934

Malaysia - Kuala Lumpur
Tel: 60-3-6201-9857
Fax: 60-3-6201-9859

Malaysia - Penang
Tel: 60-4-227-8870
Fax: 60-4-227-4068

Philippines - Manila
Tel: 63-2-634-9065
Fax: 63-2-634-9069

Singapore
Tel: 65-6334-8870
Fax: 65-6334-8850

Taiwan - Hsin Chu
Tel: 886-3-5778-366
Fax: 886-3-5770-955

Taiwan - Kaohsiung
Tel: 886-7-213-7830

Taiwan - Taipei
Tel: 886-2-2508-8600
Fax: 886-2-2508-0102

Thailand - Bangkok
Tel: 66-2-694-1351
Fax: 66-2-694-1350

EUROPE

Austria - Wels
Tel: 43-7242-2244-39
Fax: 43-7242-2244-393

Denmark - Copenhagen
Tel: 45-4450-2828
Fax: 45-4485-2829

France - Paris
Tel: 33-1-69-53-63-20
Fax: 33-1-69-30-90-79

Germany - Dusseldorf
Tel: 49-2129-3766400

Germany - Munich
Tel: 49-89-627-144-0
Fax: 49-89-627-144-44

Germany - Pforzheim
Tel: 49-7231-424750

Italy - Milan
Tel: 39-0331-742611
Fax: 39-0331-466781

Italy - Venice
Tel: 39-049-7625286

Netherlands - Drunen
Tel: 31-416-690399
Fax: 31-416-690340

Poland - Warsaw
Tel: 48-22-3325737

Spain - Madrid
Tel: 34-91-708-08-90
Fax: 34-91-708-08-91

Sweden - Stockholm
Tel: 46-8-5090-4654

UK - Wokingham
Tel: 44-118-921-5800
Fax: 44-118-921-5820

10/28/13