

FEATURES

- 1.8 V to 5.5 V single supply**
- Automotive temperature range: -40°C to $+125^{\circ}\text{C}$**
- 2.5 Ω (typical) on resistance**
- Low on resistance flatness**
- -3 dB bandwidth > 200 MHz**
- Rail-to-rail operation**
- 10-lead MSOP package**
- Fast switching times**
 - t_{ON} : 16 ns
 - t_{OFF} : 8 ns
- Typical power consumption (< 0.01 μW)**
- TTL-/CMOS-compatible**
- Qualified for automotive applications**

APPLICATIONS

- USB 1.1 signal switching circuits**
- Cell phones**
- PDA's**
- Battery-powered systems**
- Communications systems**
- Sample-and-hold systems**
- Audio signal routing**
- Audio and video switching**
- Mechanical reed relay replacement**

GENERAL DESCRIPTION

The ADG736 is a monolithic device comprising two independently selectable CMOS single pole, double throw (SPDT) switches. These switches are designed using a submicron process that provides low power dissipation yet gives high switching speed, low on resistance, low leakage currents, and wide input signal bandwidth.

The on resistance profile is very flat over the full analog signal range. This ensures excellent linearity and low distortion when switching audio signals. Fast switching speed also makes the part suitable for video signal switching.

The ADG736 operates from a single 1.8 V to 5.5 V supply, making it ideally suited to portable and battery-powered instruments.

Each switch conducts equally well in both directions when on, and each has an input signal range that extends to the power supplies. The ADG736 exhibits break-before-make switching action.

The ADG736 is available in a 10-lead MSOP package.

Rev. D

Information furnished by Analog Devices is believed to be accurate and reliable. However, no responsibility is assumed by Analog Devices for its use, nor for any infringements of patents or other rights of third parties that may result from its use. Specifications subject to change without notice. No license is granted by implication or otherwise under any patent or patent rights of Analog Devices. Trademarks and registered trademarks are the property of their respective owners.

FUNCTIONAL BLOCK DIAGRAM

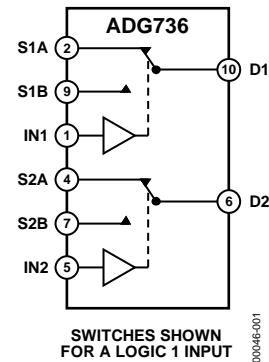


Figure 1.

PRODUCT HIGHLIGHTS

1. 1.8 V to 5.5 V Single-Supply Operation. The ADG736 offers high performance, including low on resistance and fast switching times. It is fully specified and guaranteed with 3 V and 5 V supply rails.
2. Very Low R_{ON} (4.5 Ω Maximum at 5 V, 8 Ω Maximum at 3 V). At a supply voltage of 1.8 V, R_{ON} is typically 35 Ω over the temperature range.
3. Low On Resistance Flatness.
4. -3 dB Bandwidth > 200 MHz.
5. Low Power Dissipation. CMOS construction ensures low power dissipation.
6. Fast $t_{\text{ON}}/t_{\text{OFF}}$.
7. Break-Before-Make Switching Action.
8. 10-Lead MSOP Package.

TABLE OF CONTENTS

| | | | |
|--------------------------------|---|--|----|
| Features | 1 | Pin Configuration and Function Descriptions..... | 6 |
| Applications..... | 1 | Typical Performance Characteristics | 7 |
| Functional Block Diagram | 1 | Test Circuits..... | 9 |
| General Description | 1 | Terminology | 10 |
| Product Highlights | 1 | Applications Information | 11 |
| Revision History | 2 | Outline Dimensions | 12 |
| Specifications..... | 3 | Ordering Guide | 12 |
| Absolute Maximum Ratings..... | 5 | Automotive Products..... | 12 |
| ESD Caution..... | 5 | | |

REVISION HISTORY

2/12—Rev. C to Rev. D

| | |
|---|----|
| Added Automotive Information (Throughout) | 1 |
| Updated Outline Dimensions | 12 |
| Changes to Ordering Guide | 12 |

12/07—Rev. B to Rev. C

| | |
|--|----|
| Updated Temperature Range (Throughout) | 1 |
| Changes to Features Section..... | 1 |
| Changes to Figure 4 and Figure 5..... | 7 |
| Changes to Ordering Guide | 12 |

1/07—Rev. A to Rev. B

| | |
|-----------------------------------|-----------|
| Updated Format | Universal |
| Changes to Leakage Currents | 3 |
| Changes to Leakage Currents | 4 |
| Changes to Ordering Guide | 12 |
| Updated Outline Dimensions | 12 |

11/03—Rev. 0 to Rev. A

| | |
|---|-----------|
| Renumbered Figures and TPCs..... | Universal |
| Change to Title..... | 1 |
| Changes to Applications | 1 |
| Changes to Absolute Maximum Ratings | 4 |
| Changes to Ordering Guide | 4 |
| Changes to Test Circuit 3..... | 7 |
| Changes to Outline Dimensions..... | 8 |

SPECIFICATIONS

$V_{DD} = 5\text{ V} \pm 10\%$, $GND = 0\text{ V}$. All specifications -40°C to $+125^{\circ}\text{C}$, unless otherwise noted.

Table 1.

| Parameter | B Version | | | Unit | Test Conditions/Comments |
|--|------------|----------------|-----------------|-------------------|--|
| | 25°C | -40°C to +85°C | -40°C to +125°C | | |
| ANALOG SWITCH | | | | | |
| Analog Signal Range | | | 0 V to V_{DD} | V | |
| On Resistance (R_{ON}) | 2.5 | | | Ω typ | $V_S = 0\text{ V to }V_{DD}$, $I_{DS} = -10\text{ mA}$; see Figure 10 |
| | 4 | 4.5 | 7 | Ω max | |
| On Resistance Match Between Channels (ΔR_{ON}) | 0.1 | 0.4 | 0.4 | Ω typ | $V_S = 0\text{ V to }V_{DD}$, $I_{DS} = -10\text{ mA}$ |
| | | 0.4 | 0.4 | Ω max | |
| On Resistance Flatness ($R_{FLAT(ON)}$) | 0.5 | | | Ω typ | $V_S = 0\text{ V to }V_{DD}$, $I_{DS} = -10\text{ mA}$ |
| | | 1.2 | 1.5 | Ω max | |
| LEAKAGE CURRENTS | | | | | |
| Source Off Leakage I_S (Off) | ± 0.01 | | 1 | nA typ | $V_{DD} = 5.5\text{ V}$ $V_S = 4.5\text{ V}/1\text{ V}$, $V_D = 1\text{ V}/4.5\text{ V}$; see Figure 11 |
| Channel On Leakage I_D , I_S (On) | ± 0.01 | | 5 | nA typ | $V_S = V_D = 1\text{ V or }4.5\text{ V}$; see Figure 12 |
| DIGITAL INPUTS | | | | | |
| Input High Voltage, V_{INH} | | 2.4 | 2.4 | V min | |
| Input Low Voltage, V_{INL} | | 0.8 | 0.8 | V max | |
| Input Current, I_{INL} or I_{INH} | 0.005 | | | μA typ | $V_{IN} = V_{INL}$ or V_{INH} |
| | | ± 0.1 | ± 0.1 | μA max | |
| DYNAMIC CHARACTERISTICS¹ | | | | | |
| t_{ON} | 12 | | | ns typ | $R_L = 300\ \Omega$, $C_L = 35\text{ pF}$ |
| | | 16 | 16 | ns max | $V_S = 3\text{ V}$; see Figure 13 |
| t_{OFF} | 5 | | | ns typ | $R_L = 300\ \Omega$, $C_L = 35\text{ pF}$ |
| | | 8 | 8 | ns max | $V_S = 3\text{ V}$; see Figure 13 |
| Break-Before-Make Time Delay, t_D | 7 | | | ns typ | $R_L = 300\ \Omega$, $C_L = 35\text{ pF}$ |
| | | 1 | 1 | ns min | $V_{S1} = V_{S2} = 3\text{ V}$; see Figure 14 |
| Off Isolation | -62 | | | dB typ | $R_L = 50\ \Omega$, $C_L = 5\text{ pF}$, $f = 10\text{ MHz}$ |
| | -82 | | | dB typ | $R_L = 50\ \Omega$, $C_L = 5\text{ pF}$, $f = 1\text{ MHz}$; see Figure 15 |
| Channel-to-Channel Crosstalk | -62 | | | dB typ | $R_L = 50\ \Omega$, $C_L = 5\text{ pF}$, $f = 10\text{ MHz}$ |
| | -82 | | | dB typ | $R_L = 50\ \Omega$, $C_L = 5\text{ pF}$, $f = 1\text{ MHz}$; see Figure 16 |
| Bandwidth (-3 dB) | 200 | | | MHz typ | $R_L = 50\ \Omega$, $C_L = 5\text{ pF}$; see Figure 17 |
| C_S (Off) | 9 | | | pF typ | |
| C_D , C_S (On) | 32 | | | pF typ | |
| POWER REQUIREMENTS | | | | | |
| I_{DD} | 0.001 | | | μA typ | $V_{DD} = 5.5\text{ V}$ Digital inputs = 0 V or 5 V |
| | | 1.0 | 1.0 | μA max | |

¹ Guaranteed by design; not subject to production test.

$V_{DD} = 3\text{ V} \pm 10\%$, $GND = 0\text{ V}$. All specifications -40°C to $+125^\circ\text{C}$, unless otherwise noted.

Table 2.

| Parameter | B Version | | | Unit | Test Conditions/Comments |
|--|------------|----------------|-----------------|-------------------|--|
| | 25°C | -40°C to +85°C | -40°C to +125°C | | |
| ANALOG SWITCH | | | | | |
| Analog Signal Range | | | 0 V to V_{DD} | V | |
| On Resistance (R_{ON}) | 5 | 5.5 | | Ω typ | $V_S = 0\text{ V to }V_{DD}$, $I_{DS} = -10\text{ mA}$; see Figure 10 |
| | | 8 | 12 | Ω max | See Figure 10 |
| On Resistance Match Between Channels (ΔR_{ON}) | 0.1 | | | Ω typ | $V_S = 0\text{ V to }V_{DD}$, $I_{DS} = -10\text{ mA}$ |
| | | 0.4 | 0.4 | Ω max | |
| On Resistance Flatness ($R_{FLAT(ON)}$) | | 2.5 | 2.5 | Ω typ | $V_S = 0\text{ V to }V_{DD}$, $I_{DS} = -10\text{ mA}$ |
| LEAKAGE CURRENTS | | | | | |
| Source Off Leakage I_S (Off) | ± 0.01 | | 1 | nA typ | $V_{DD} = 3.3\text{ V}$ $V_S = 3\text{ V}/1\text{ V}$, $V_D = 1\text{ V}/3\text{ V}$; see Figure 11 |
| Channel On Leakage I_D , I_S (On) | ± 0.01 | | 5 | nA typ | $V_S = V_D = 1\text{ V or }3\text{ V}$; see Figure 12 |
| DIGITAL INPUTS | | | | | |
| Input High Voltage, V_{INH} | | 2.0 | 2.4 | V min | |
| Input Low Voltage, V_{INL} | | 0.4 | 0.8 | V max | |
| Input Current, I_{INL} or I_{INH} | 0.005 | | | μA typ | $V_{IN} = V_{INL}$ or V_{INH} |
| | | ± 0.1 | ± 0.1 | μA max | |
| DYNAMIC CHARACTERISTICS¹ | | | | | |
| t_{ON} | 14 | | | ns typ | $R_L = 300\ \Omega$, $C_L = 35\text{ pF}$ |
| | | 20 | 20 | ns max | $V_S = 2\text{ V}$; see Figure 13 |
| t_{OFF} | 6 | | | ns typ | $R_L = 300\ \Omega$, $C_L = 35\text{ pF}$ |
| | | 10 | 10 | ns max | $V_S = 2\text{ V}$; see Figure 13 |
| Break-Before-Make Time Delay, t_D | 7 | | | ns typ | $R_L = 300\ \Omega$, $C_L = 35\text{ pF}$ |
| | | 1 | 1 | ns min | $V_{S1} = V_{S2} = 2\text{ V}$; see Figure 14 |
| Off Isolation | -62 | | | dB typ | $R_L = 50\ \Omega$, $C_L = 5\text{ pF}$, $f = 10\text{ MHz}$ |
| | -82 | | | dB typ | $R_L = 50\ \Omega$, $C_L = 5\text{ pF}$, $f = 1\text{ MHz}$; see Figure 15 |
| Channel-to-Channel Crosstalk | -62 | | | dB typ | $R_L = 50\ \Omega$, $C_L = 5\text{ pF}$, $f = 10\text{ MHz}$ |
| | -82 | | | dB typ | $R_L = 50\ \Omega$, $C_L = 5\text{ pF}$, $f = 1\text{ MHz}$; see Figure 16 |
| Bandwidth (-3 dB) | 200 | | | MHz typ | $R_L = 50\ \Omega$, $C_L = 5\text{ pF}$; see Figure 17 |
| C_S (Off) | 9 | | | pF typ | |
| C_D , C_S (On) | 32 | | | pF typ | |
| POWER REQUIREMENTS | | | | | |
| I_{DD} | 0.001 | | | μA typ | $V_{DD} = 3.3\text{ V}$ Digital inputs = 0 V or 3 V |
| | | 1.0 | 1.0 | μA max | |

¹ Guaranteed by design; not subject to production test.

ABSOLUTE MAXIMUM RATINGS

$T_A = 25^\circ\text{C}$, unless otherwise noted.

Table 3.

| Parameter | Rating |
|---------------------------------------|---|
| V_{DD} to GND | -0.3 V to +6 V |
| Analog, Digital Inputs ¹ | -0.3 V to $V_{DD} + 0.3$ V or 30 mA, whichever occurs first |
| Continuous Current, S or D | 30 mA |
| Peak Current, S or D | 100 mA (Pulsed at 1 ms, 10% duty cycle maximum) |
| Operating Temperature Range | |
| Automotive | -40°C to +125°C |
| Storage Temperature Range | -65°C to +150°C |
| Junction Temperature | 150°C |
| MSOP Package, Power Dissipation | 315 mW |
| θ_{JA} Thermal Impedance | 205°C/W |
| Lead Temperature (Soldering, 10 sec) | 300°C |
| IR Reflow (Peak Temperature, <20 sec) | 235°C |
| Lead-Free Reflow Soldering | |
| Peak Temperature | 260(+0/-5)°C |
| Time at Peak Temperature | 10 sec to 40 sec |
| ESD | 2 kV |

¹ Overvoltages at IN, S, or D are clamped by internal diodes. Current should be limited to the maximum ratings given.

Stresses above those listed under Absolute Maximum Ratings may cause permanent damage to the device. This is a stress rating only; functional operation of the device at these or any other conditions above those indicated in the operational section of this specification is not implied. Exposure to absolute maximum rating conditions for extended periods may affect device reliability.

ESD CAUTION



ESD (electrostatic discharge) sensitive device. Charged devices and circuit boards can discharge without detection. Although this product features patented or proprietary protection circuitry, damage may occur on devices subjected to high energy ESD. Therefore, proper ESD precautions should be taken to avoid performance degradation or loss of functionality.

PIN CONFIGURATION AND FUNCTION DESCRIPTIONS

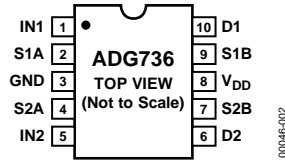


Figure 2. Pin Configuration

Table 4. Pin Function Descriptions

| Pin No. | Mnemonic | Description |
|---------|-----------------|---|
| 1 | IN1 | Logic Control Input. |
| 2 | S1A | Source Terminal. May be an input or output. |
| 3 | GND | Ground (0 V) Reference. |
| 4 | S2A | Source Terminal. May be an input or output. |
| 5 | IN2 | Logic Control Input. |
| 6 | D2 | Drain Terminal. May be an input or output. |
| 7 | S2B | Source Terminal. May be an input or output. |
| 8 | V _{DD} | Most Positive Power Supply Potential. |
| 9 | S1B | Source Terminal. May be an input or output. |
| 10 | D1 | Drain Terminal. May be an input or output. |

Table 5. Truth Table

| Logic | Switch A | Switch B |
|-------|----------|----------|
| 0 | Off | On |
| 1 | On | Off |

TYPICAL PERFORMANCE CHARACTERISTICS

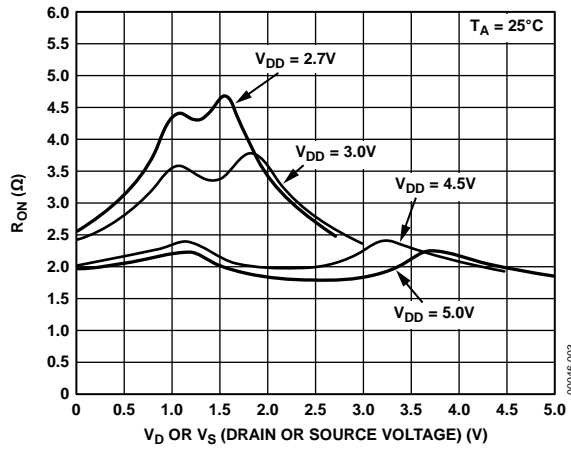


Figure 3. On Resistance as a Function of V_D or V_S Single Supplies

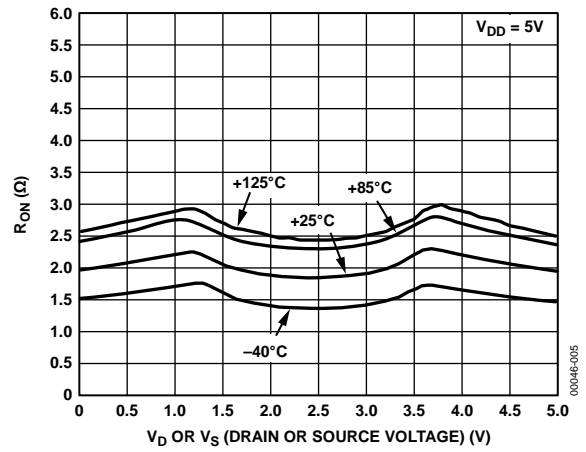


Figure 5. On Resistance as a Function of V_D or V_S for Different Temperatures
 $V_{DD} = 5V$

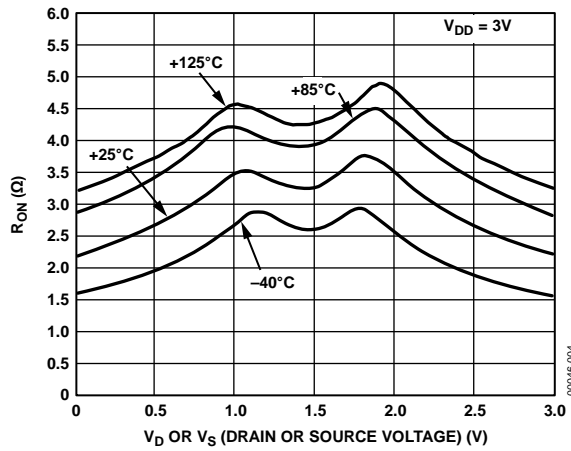


Figure 4. On Resistance as a Function of V_D or V_S for Different Temperatures
 $V_{DD} = 3V$

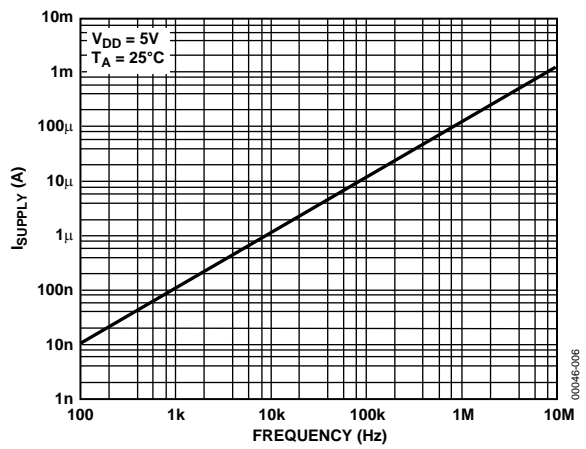


Figure 6. Supply Current vs. Input Switching Frequency

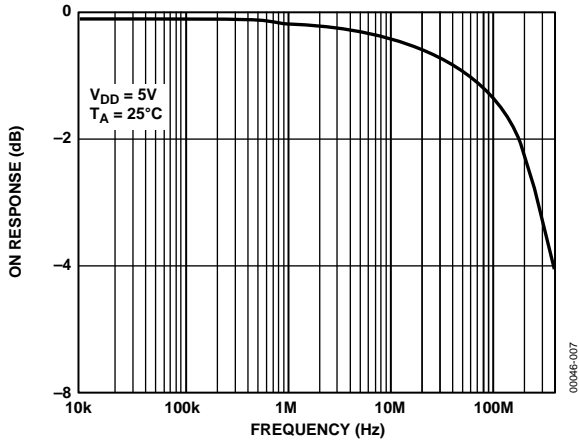


Figure 7. Bandwidth

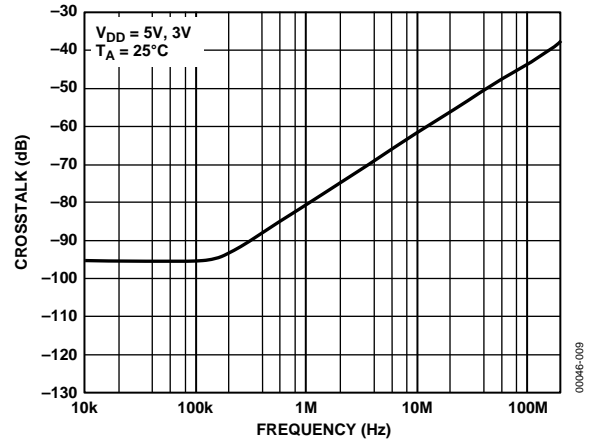


Figure 9. Crosstalk vs. Frequency

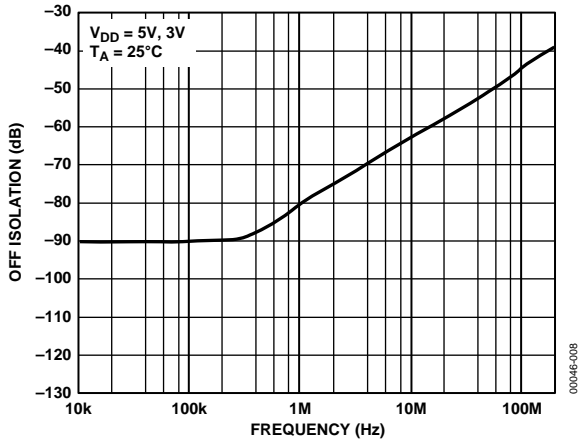


Figure 8. Off Isolation vs. Frequency

TEST CIRCUITS

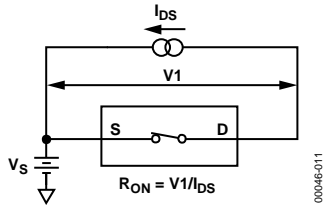


Figure 10. On Resistance

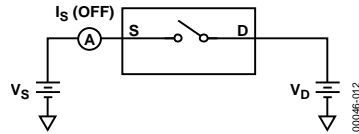


Figure 11. Off Leakage

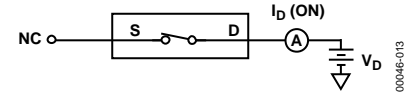


Figure 12. On Leakage

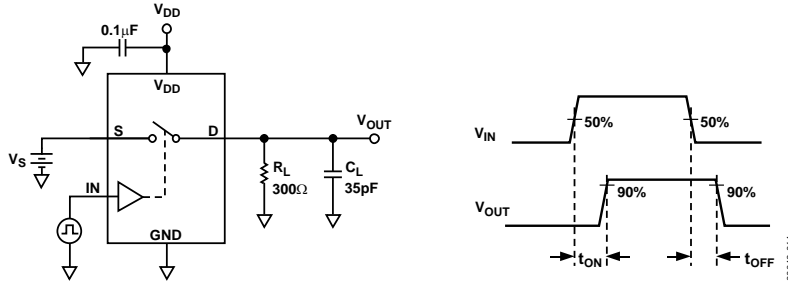


Figure 13. Switching Times

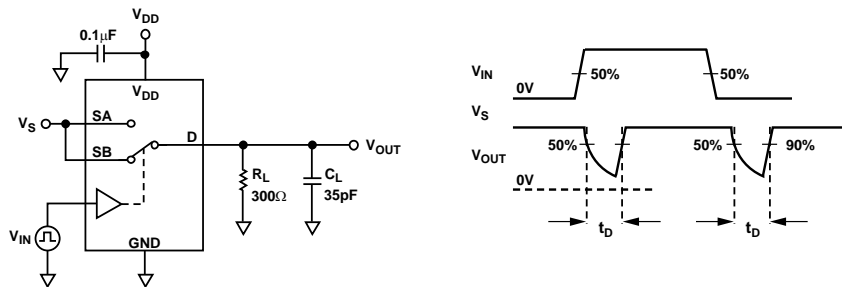


Figure 14. Break-Before-Make Time Delay, t_D

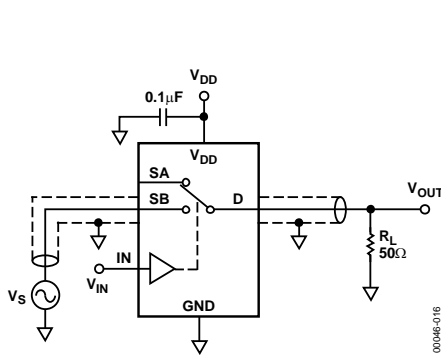
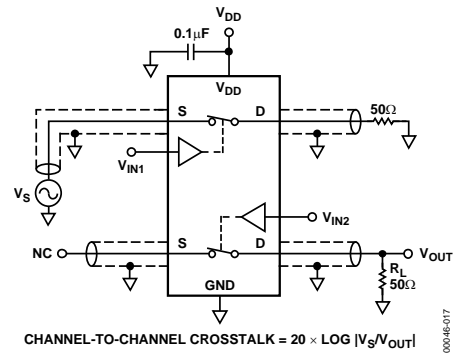


Figure 15. Off Isolation



CHANNEL-TO-CHANNEL CROSSTALK = $20 \times \text{LOG} |V_S/V_{OUT}|$

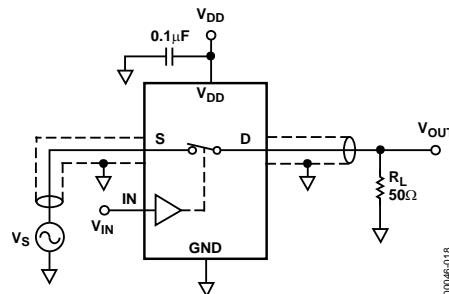


Figure 17. Bandwidth

TERMINOLOGY

R_{ON}

Ohmic resistance between Terminal D and Terminal S.

ΔR_{ON}

On resistance match between any two channels; that is, R_{ON} maximum – R_{ON} minimum.

R_{FLAT (ON)}

Flatness is defined as the difference between the maximum and minimum value of on resistance as measured over the specified analog signal range.

I_{S (Off)}

Source leakage current with the switch off.

I_D, I_{S (On)}

Channel leakage current with the switch on.

V_{D (V_S)}

Analog voltage on Terminal D and Terminal S.

C_{S (Off)}

Off switch source capacitance.

C_D, C_{S (On)}

On switch capacitance.

t_{ON}

Delay between applying the digital control input and the output switching on. See Figure 13.

t_{OFF}

Delay between applying the digital control input and the output switching off. See Figure 13.

t_D

Off time or on time measured between the 90% points of both switches, when switching from one address state to another. See Figure 14.

Crosstalk

A measure of unwanted signal that is coupled from one channel to another as a result of parasitic capacitance.

Off Isolation

A measure of unwanted signal coupling through an off switch.

Bandwidth

The frequency at which the output is attenuated by –3 dB.

On Response

The frequency response of the on switch.

On Loss

The voltage drop across the on switch, seen on the on response vs. frequency plot (see Figure 7) as how many decibels (dB) the signal is away from 0 dB at very low frequencies.

APPLICATIONS INFORMATION

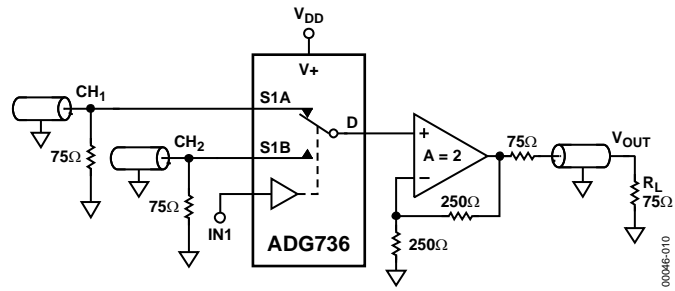
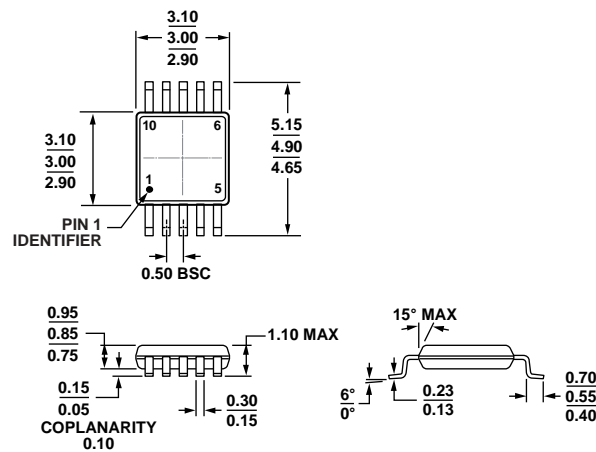


Figure 18. Using the ADG736 to Select Between Two Video Signals

000046-010

OUTLINE DIMENSIONS



COMPLIANT TO JEDEC STANDARDS MO-187-BA
 Figure 19. 10-Lead Mini Small Outline Package [MSOP]
 (RM-10)
 Dimensions shown in millimeters

ORDERING GUIDE

| Model ^{1,2} | Temperature Range | Package Description | Package Option | Branding |
|----------------------|-------------------|---|----------------|----------|
| ADG736BRM | -40°C to +125°C | 10-Lead Mini Small Outline Package (MSOP) | RM-10 | SAB |
| ADG736BRM-REEL | -40°C to +125°C | 10-Lead Mini Small Outline Package (MSOP) | RM-10 | SAB |
| ADG736BRM-REEL7 | -40°C to +125°C | 10-Lead Mini Small Outline Package (MSOP) | RM-10 | SAB |
| ADG736BRMZ | -40°C to +125°C | 10-Lead Mini Small Outline Package (MSOP) | RM-10 | SAB# |
| ADG736BRMZ-REEL | -40°C to +125°C | 10-Lead Mini Small Outline Package (MSOP) | RM-10 | SAB# |
| ADG736BRMZ-REEL7 | -40°C to +125°C | 10-Lead Mini Small Outline Package (MSOP) | RM-10 | SAB# |
| ADW54010Z-OREEL | -40°C to +125°C | 10-Lead Mini Small Outline Package (MSOP) | RM-10 | SAB# |

¹ Z = RoHS Compliant Part, # denotes RoHS compliant part may be top or bottom marked.
² W = Qualified for Automotive Applications.

AUTOMOTIVE PRODUCTS

The ADW54010Z model is available with controlled manufacturing to support the quality and reliability requirements of automotive applications. Note that these automotive models may have specifications that differ from the commercial models; therefore, designers should review the Specifications section of this data sheet carefully. Only the automotive grade products shown are available for use in automotive applications. Contact your local Analog Devices account representative for specific product ordering information and to obtain the specific Automotive Reliability reports for these models.