

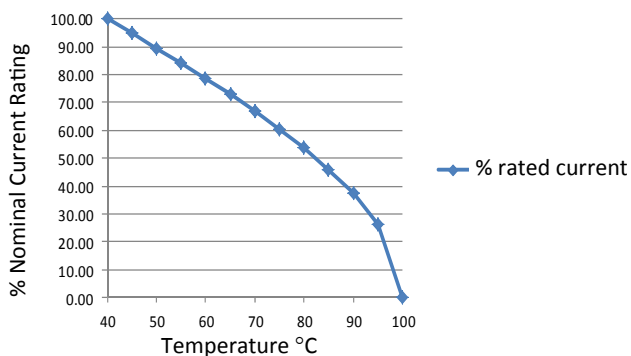
RES90 Chassis Mounted Filter

Very High Differential and Common Mode

Roxburgh's RES90 series is a multi-stage EMC filter with very high differential and common mode attenuation. Featuring excellent attenuation performance this series is suitable for noisy applications where increased filter performance is required.



**Temperature Derating Curve for EMC Filters
Rated at 40°C Ambient and 100°C Maximum**



Call us on:
Tel: +44 (0) 1724 273200

Features:

- Multi-stage
- Very high differential and common mode attenuation
- Excellent attenuation performance
- UL approved E191581
- For use from DC to 400Hz
- 1 Amp to 30 Amp

Benefits:

- Compact size for rated current
- Fast-on, screw or wire terminations
- Quick and Easy Mounting
- Available from UK Stock

Application Examples:

- Lighting
- Drives
- Electrical and electronic equipment
- Consumer goods
- Household equipment
- Building automation
- Machinery
- Electronic data/communication processing equipment
- Office automation

Full technical specification on page 2

Performance Curves on page 3

Other options in this range on page 4

DEM Manufacturing

Deltron Emcon House
Hargreaves Way
Sawcliffe Industrial Park
Scunthorpe, North Lincolnshire.
DN15 8RF



Tel: 44 (0) 1724 273200

Fax: 44 (0) 1724 280353

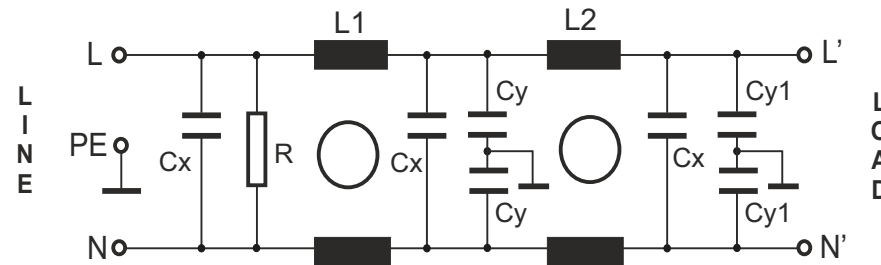
Email: sales@dem-uk.com

Web: www.dem-uk.com/roxburgh

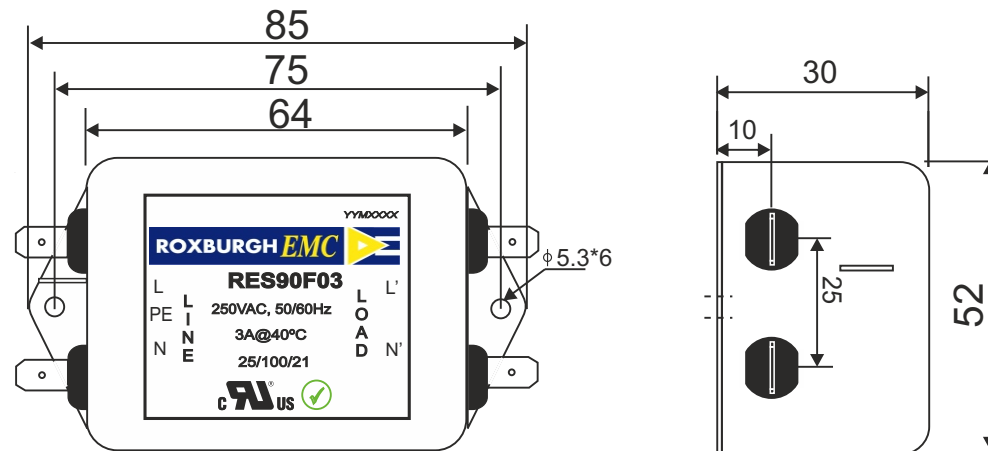
RES90F03	Rev. 0
CHARACTERISTICS:	
Rated Voltage:	250VAC max
Rated Current at Ambient:	3A @ 40°C
Operating Frequency:	DC-400HZ
Climatic Class (IEC60068-1):	25/100/21
Temperature Range:	-25°C to +100°C
Over load Current:	1.5 x Rated Ct. for 1 Min
Operational Leakage current : (at 230VAC and Total C +/-20%)	0.5 mA max
Worst case Leakage current : (N interrupted and Total C +/-20%)	<1.0 mA max
DCR @ 25°C (+/-25%) :	250 mΩ
Test Volatge (100%) for 2 sec:-	P-P: 1100VDC
	P-GND: 3000VDC
Ingress Protection:	IP 20
Weight (approximate):	200 gr
FILTER PARAMETERS:	
Total Inductance (P-P'+N-N') @10KHz:	28mH +50%,-30%
Total Capacitance (P-P/P-N) @1KHz:	0.99μF +/- -20%
Total Capacitance (P/N-GND) @1KHz:	6.4nF +/- -20%
Total Resistance (P-P/P-N):	470K Ω +/- -10%
Total Resistance (P/N-GND):	
APPROVALS: REACH RoHS UL	APPROVED BY AJAY Date: 25-03-2014



CIRCUIT DIAGRAM:



MECHANICAL DIMENSION (mm):



Note:

Housing matl. Fe with Ni Plated
Fast-On Terminal (6.38 x 0.8mm)
Connections

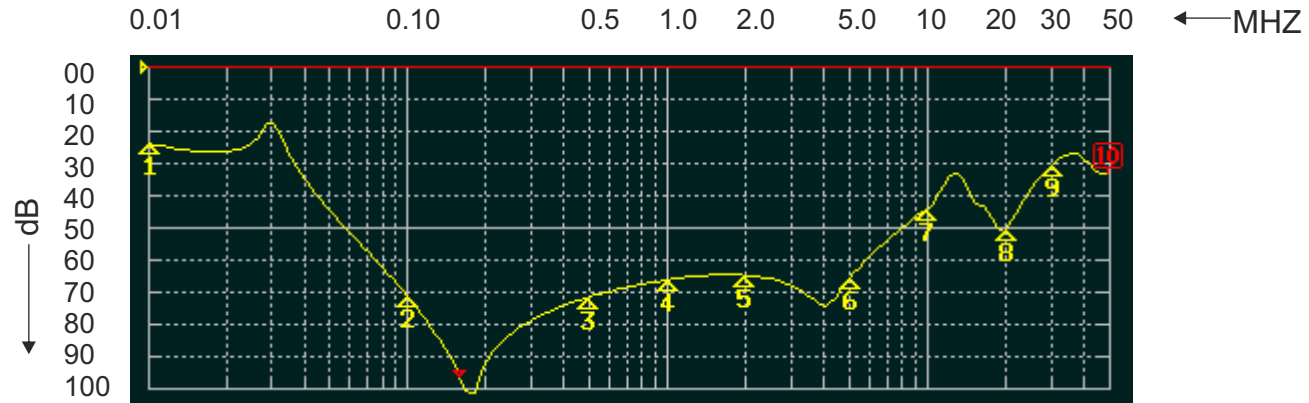


TOLERANCE: +/-1.0 mm

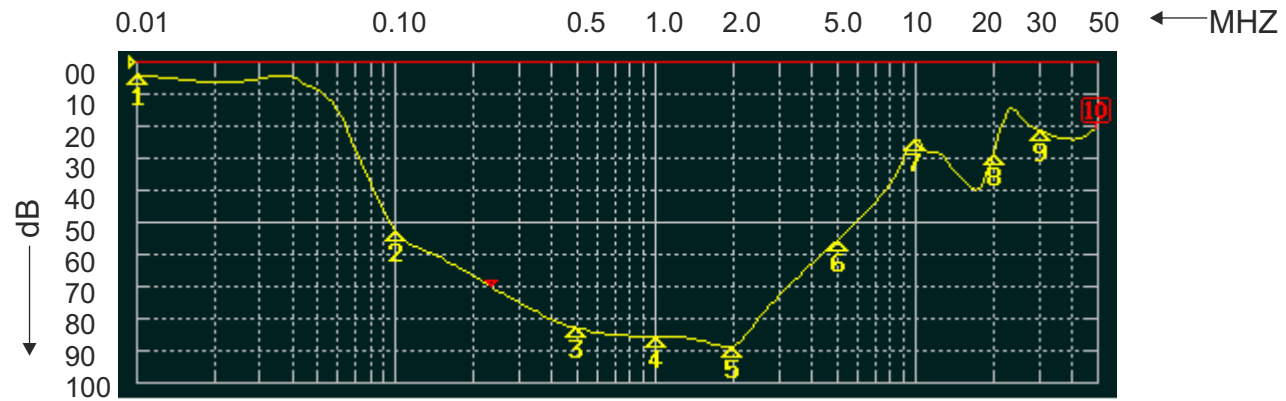
ROXBURGH EMC

FILTER INSERTION LOSS CHARACTERISTICS CISPR 17 - 50 OHM METHOD

RES90F03



COMMON MODE



DIFFERENTIAL MODE



RES90 Chassis Mounted Filter

Very High Differential and Common Mode

Options Available:

Part Number	Rated Current @40°C A	Leakage Current @ 230V/50Hz mA	Inductance ΣL mH	Capacitance ΣCx uF	Capacitance ΣCy nF	Resistance ΣR K Ω	Connection Type	
RES90F01	1	0.5	40	0.66	6.4	680	F	W
RES90F03	3	0.5	28	0.99	6.4	470	F	W
RES90F06	6	0.67	16	1.41	8.6	330	F	W
RES90F10	10	0.67	16	1.41	8.6	330	F	W
RES90F16	16	1.02	08	3.00	22	220	F	W
RES90F20	20	1.02	5.4	3.00	22	220	F	
RES90S20	20	1.02	5.4	3.00	22	220		S
RES90S30	30	1.02	3.0	3.00	22	220		S



Call us on:
Tel: +44 (0) 1724 273200

DEM Manufacturing
Deltron Emcon House
Hargreaves Way
Sawcliffe Industrial Park
Scunthorpe, North Lincolnshire.
DN15 8RF



Tel: 44 (0) 1724 273200
Fax: 44 (0) 1724 280353
Email: sales@dem-uk.com
Web: www.dem-uk.com/roxburgh