

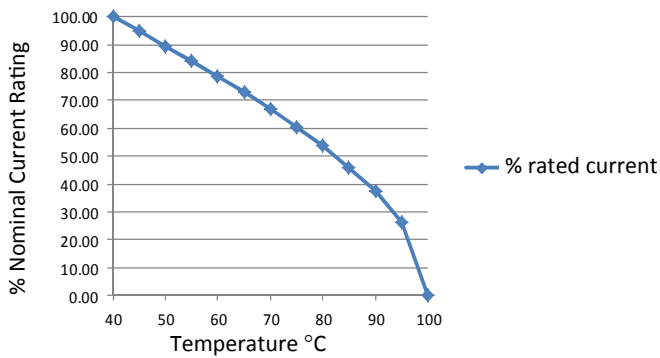
RES30 Chassis Mounted Filter

High Differential Mode and High Performance

Roxburgh's RES30 single phase chassis mounting filters offer high differential attenuation. These high performance filters are suitable for a broad range of applications including noisy environments where increased filter performance is required.



Temperature Derating Curve for EMC Filters
Rated at 40°C Ambient and 100°C Maximum



Call us on:
Tel: +44 (0) 1724 273200

Features:

- Single phase high performance
- High differential attenuation
- UL approved E191581
- For use from DC to 400Hz
- 1 Amp to 30 Amp

Benefits:

- Compact size for rated current
- Fast-on, screw or wire terminations
- Quick and Easy Mounting
- Available from UK Stock

Application Examples:

- Lighting
- Electrical and electronic equipment
- Consumer goods
- Household equipment
- Building automation
- Machinery
- Electronic data/communication processing equipment
- Office automation

Full technical specification on page 2

Performance Curves on page 3

Other options in this range on page 4

DEM Manufacturing
Deltron Emcon House
Hargreaves Way
Sawcliffe Industrial Park
Scunthorpe, North Lincolnshire.
DN15 8RF



Tel: 44 (0) 1724 273200

Fax: 44 (0) 1724 280353

Email: sales@dem-uk.com

Web: www.dem-uk.com/roxburgh

RES30F10

Rev. 0

CHARACTERISTICS:

Rated Voltage:	250VAC max
Rated Current at Ambient:	10A @ 40°C
Operating Frequency:	DC-60HZ
Climatic Class (IEC60068-1):	25/100/21
Temperature Range:	-25°C to +100°C
Over load Current:	1.5 x Rated Ct. for 1 Min
Operational Leakage current : (at 230VAC and Total C +/-20%)	0.73 mA max

Worst case Leakage current : (N interrupted and Total C +/-20%)	<1.11 mA max
DCR @ 25°C (+/-25%) :	150 mΩ
Test Voltage (100%) for 2 sec:-	
P-P:	1100VDC
P-GND:	3000VDC

Ingress Protection:	IP 20
Weight (Approximate):	190 gr

FILTER PARAMETERS:

Total Inductance (P-P'+N-N') @10KHz:	8mH +50%,-30%
Total Capacitance (P-P/P-N) @1KHz:	0.94μF +/- -20%
Total Capacitance (P/N-GND) @1KHz:	9.4nF +/- -20%
Total Resistance (P-P/P-N):	0.68M Ω +/- -10%
Total Resistance (P/N-GND):	

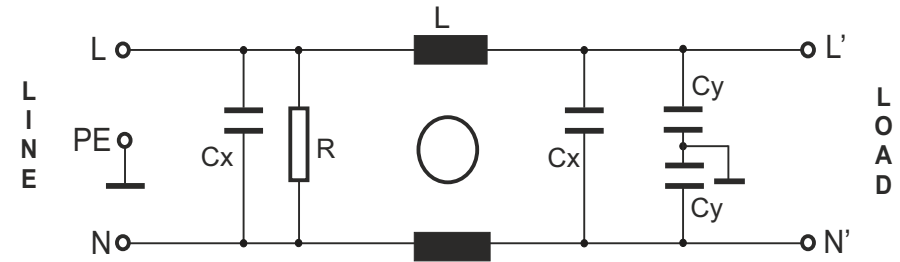
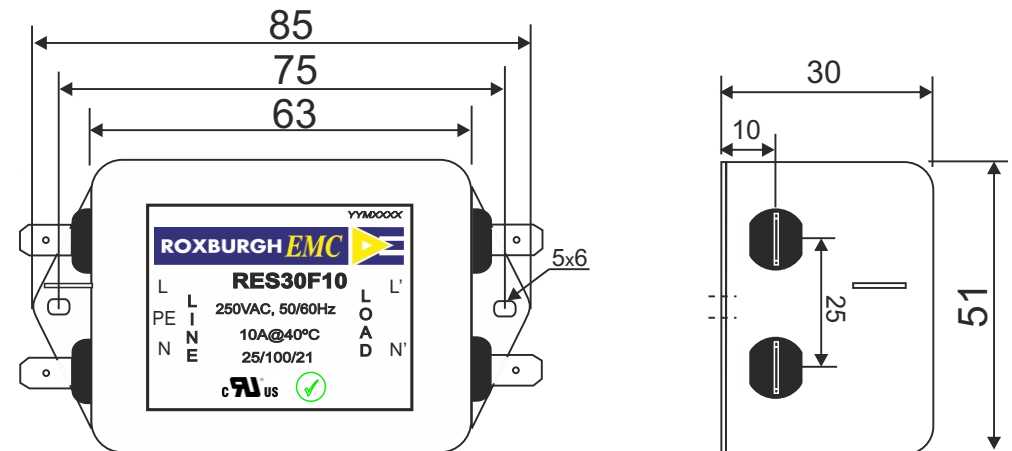
APPROVALS: REACH
RoHS
UL



APPROVED
BY
AJAY
Date: 15-03-2014

ROXBURGH EMC

TEL: +44(0) 1724 273200
email: sales@dem-uk.com
web: www.dem-uk.com/roxburgh

CIRCUIT DIAGRAM:**MECHANICAL DIMENSION (mm):****Note:**

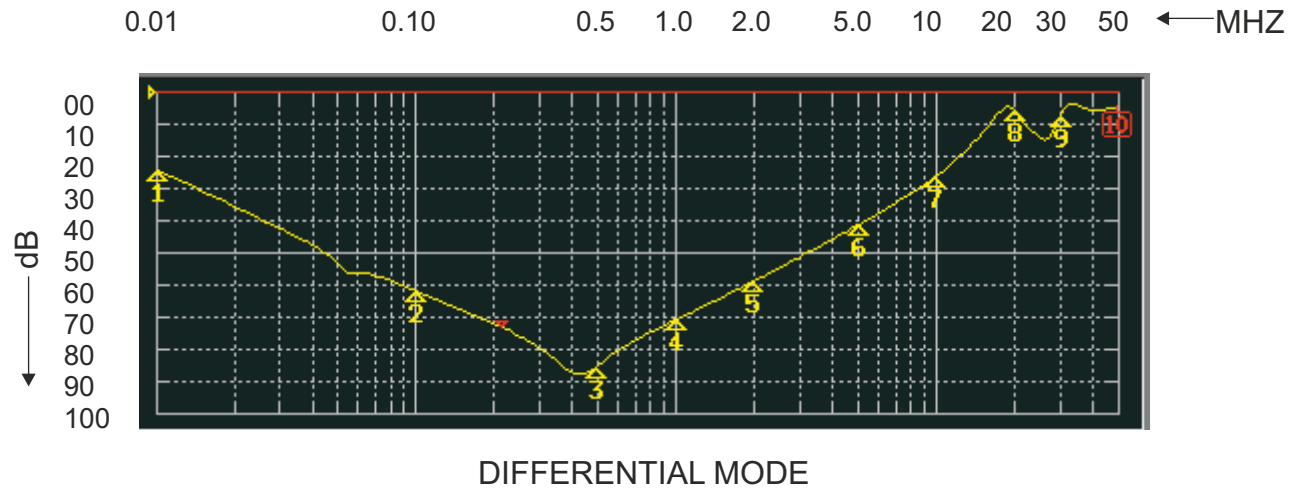
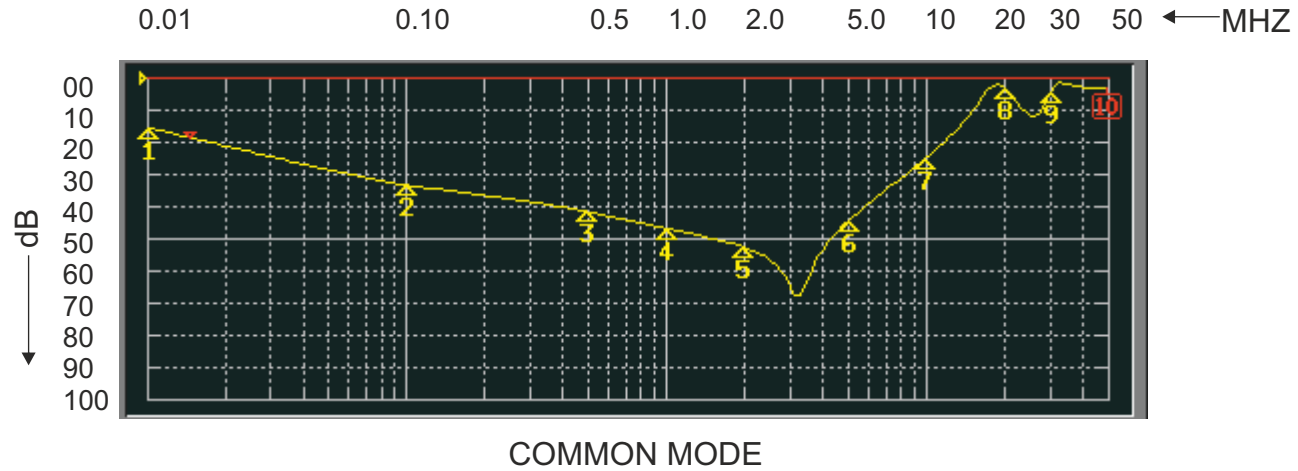
Housing matl. Fe with Ni Plated
Fast-On Terminal (6.38 x 0.8mm)
Connections

TOLERANCE: +/-1.0 mm



ROXBURGH ELECTRONICS LTD
FILTER INSERTION LOSS CHARACTERISTICS
CISPR 17 - 50 OHM METHOD




RES30F10



RES30 Chassis Mounted Filter

High Differential Mode and High Performance

Options Available:

Part Number	Rated Current @40°C	Leakage Current @ 230V/50Hz	Inductance ΣL	Capacitance ΣCx	Capacitance ΣCy	Resistance ΣR	Connection Type		
									
RES30F01	1	0.34	20	0.44	4.4	1000	F	W	
RES30F03	3	0.52	14	0.66	6.6	1000	F	W	
RES30F06	6	0.73	8	0.94	9.4	680	F	W	
RES30F10	10	0.73	8	0.94	9.4	680	F	W	
RES30F16	16	0.87	4	2.00	20	330	F	W	
RES30F20	20	0.87	4	2.00	20	330	F	W	
RES30S20	20	0.87	4	2.00	20	330		W	S
RES30S30	30	0.87	2	2.00	20	330			S

Call us on:

Tel: +44 (0) 1724 273200

DEM Manufacturing
 Deltron Emcon House
 Hargreaves Way
 Sawcliffe Industrial Park
 Scunthorpe, North Lincolnshire.
 DN15 8RF



Tel: 44 (0) 1724 273200

Fax: 44 (0) 1724 280353

Email: sales@dem-uk.com

Web: www.dem-uk.com/roxburgh