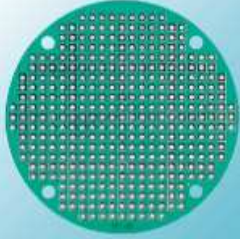


## PC-15



### FEATURES:

- Material: Phenolic and glass-fiber, single side board 1.6 mm thickness.
- Size: 60 diameter.
- Round type regular PC board.
- Compatible with PC-13 and PC-14 as a drive circuit.
- UL frame: 94V-0.
- With 4 mounting holes at corner.
- Instructions menu included.