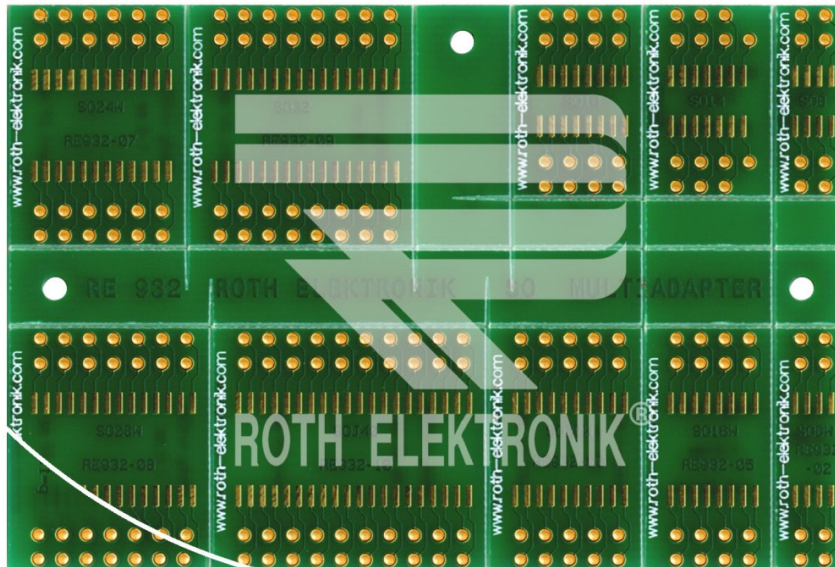


SO/SOJ-SMD Multiadapter (small outline)



RE932

- EPOXY fibre-glass FR4 1.50 mm double-sided 35 µm CU (pth)
- solder and component side with chem. NI/AU surface and solder stop mask
- hole dia 1.00 mm
- adapter for 10 different SOs
- pitch 1.27 mm
- pre-scratched rated break points for the separation of individual modules from the board
- size 58.50 x 88.00 mm

Modul-No	Pitch	mil	Pin/Quantity	Size (mm)
RE932-01	1.27 mm	0.50	8	3.9 (153 mil)
RE932-02	1.27 mm	0.50	8-w	7.5 (295 mil)
RE932-03	1.27 mm	0.50	14	3.9 (153 mil)
RE932-04	1.27 mm	0.50	16	3.9 (153 mil)
RE932-05	1.27 mm	0.50	16-w	7.5 (295 mil)
RE932-06	1.27 mm	0.50	20-w	7.5 (295 mil)
RE932-07	1.27 mm	0.50	24-w	7.5 (295 mil)
RE932-08	1.27 mm	0.50	28-w	7.5 (295 mil)
RE932-09	1.27 mm	0.50	32	7.5 (295 mil)
RE932-10	1.27 mm	0.50	40 (SOJ)	10.16 (400 mil)