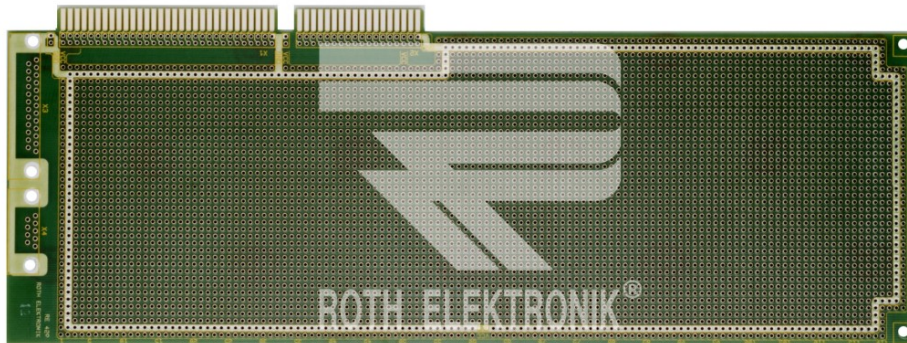


prototype card AT and compatible



#### RE429-LF

- microprocessor card for the establishment of PC extensions
- system card for the quick building-up of interfaces, data acquisition, memory expansion, graphic complements, etc.
- the micro-card can be provided with a 25 and 9 channel D-subminiature appliance plug for additional I/O transfer
- VACREL solderings stop mask at component and solder side
- potential path for VCC and GND
- all borings are plated through holes
- clear soldering dot screen field
- basic material: EPOXY fibre-glass reinforced laminated FR4, 1.5 mm double-sided 35 µm CU (pth)
- plug contacts:
  - direct 2 x 31 channel, screen 2.54 mm, gold-plated 1.5 µm
  - direct 2 x 18 channel, screen 2.54 mm, gold-plated 1.5 µm
- basic grid 2.54 x 2.54 mm
- working temperature max. 150° C.
- soldering bath proof: 260° C. > 50 Sek.
- size 114 x 333 mm