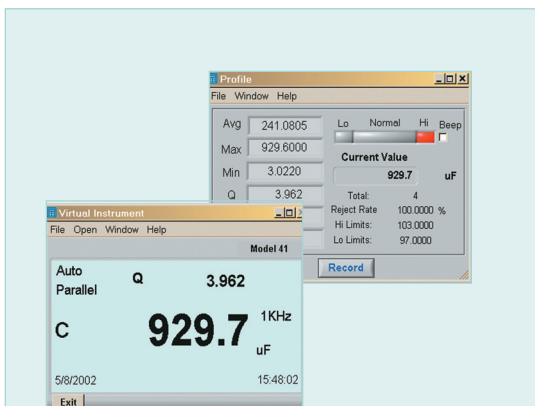


Passive Component LCR Meter

Measures Inductance, Capacitance, and Resistance
With secondary parameter Q (Quality), D (Dissipation), R (Resistance)

Features:

- Simultaneous 20,000/10,000 count backlit display of the primary parameter (L, C or R) with the secondary parameter of Q (quality), D (dissipation) or R (resistance)
- Set Hi/Lo limits using absolute values or percentage limits
- Parallel or Series equivalent circuit
- Max/Min/Avg; Auto power off with disable
- Automatic blown fuse indication
- Built-in test fixture or use external test leads
- Open and Short Zero removes unwanted stray impedances from the measurement
- Relative mode, zero, or supplied reference
- Complete with test leads, 9V battery, software, cable, and protective holster



Built-in RS-232 with Windows[®] 95/98/NT/2000/XP compatible software.

Specifications	Ranges	Basic Accuracy
Inductance	2000.0µH, 20.000mH, 200.00mH, 2000.0mH 20.000H, 200.00H, 2000.0H, 10000H	±(0.7%rdg + Lx/10000 + 5 digit) (DF<0.5)
Capacitance	2000.0pF, 20.000nF, 200.00nF, 2000.0nF 20.000µF, 200.00µF, 2000.0µF, 10.000mF	±(0.7%rdg + 5 digit) (DF<0.1)
Resistance	20.000W, 200.00W, 2.0000kW, 20.000kW, 200.00kW, 2.0000MW, 10.000MW	±(0.5%rdg + 8 digit)
DF (with C)	0 to 0.9999	±(0.7%rdg + 100/Cx + 5 digit)
Q	0 to 9999	±(1.2%rdg + 100/Lx + 5 digit)
Test Frequency	120Hz and 1kHz	
Dimensions	7.56 x 3.58 x 2.1" (19.2 x 9.1 x 5.25cm)	
Weight	12.87oz (365g)	

Ordering Information:

- 380193Passive Component LCR Meter
153117117VAC adaptor
153220230VAC adaptor

