

SPANNFIX - BASES

The variable Spannfix bases enable accurate and secure positioning in all directions, e.g. sensors, measuring devices, monitors and cameras. The ESD versions have a dissipating black surface with a resistance between 10^7 and $10^8 \Omega$.

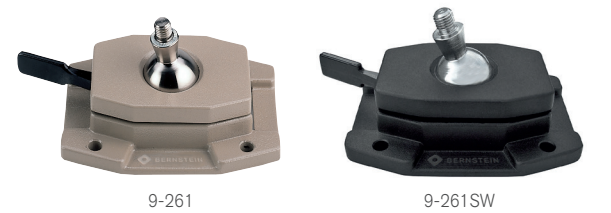
SPANNFIX base with ball joint and threaded stud M 12 x 1.5, for screwing

- 9-251 Colour: umbra | Surface: structured | Weight: 940 g
- 9-251 ESD Colour: ESD black | Surface: smooth, silky | Weight: 940 g
- 9-251 SW Colour: black | Surface: fine, matt | Weight: 940 g

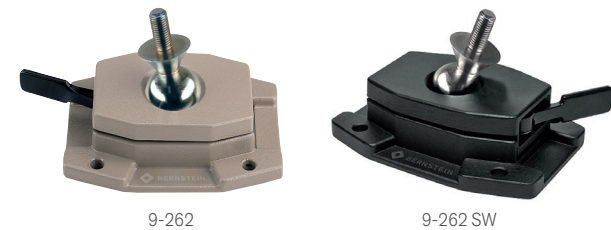


SPANNFIX base with ball joint and threaded pin, for fixed screwing on

- 9-261 Colour: umbra | Surface: structured | Weight: 830 g
- 9-261 SW Colour: ESD black | Surface: smooth, silky | Weight: 830 g
- Size of the base plate: 150 x 105 mm
- Thread: M 12 x 1.5
- Through holes: \varnothing 9 mm



- 9-262 Colour: umbra | Surface: structured | Weight: 910 g
- 9-262 SW Colour: ESD black | Surface: smooth, silky | Weight: 910 g
- Size of the base plate: 150 x 105 mm
- Thread: M 12 x 1.5
- Thread length extra long: 25 mm
- Support plate: \varnothing 40 mm
- Through holes: \varnothing 9 mm



- 9-281 Colour: umbra | Surface: structured | Weight: 660 g
- 9-281 SW Colour: ESD black | Surface: smooth, silky | Weight: 660 g
- Size of the base plate: 110 x 72 mm
- Size of the holes: \varnothing 6 mm
- Thread: M 12 x 1.5



NEW

SPANNFIX-base with ball joint and threaded stud, with magnetic feet

- 9-284 SW Colour: ESD black | Surface: smooth, silky | Weight: 730 g
- Size of the base plate: 110 x 72 mm
- Size of the magnets: \varnothing 20 mm
- Threaded stud with self-locking nut: M 12 x 1.5
- Thread length: 25 mm
- Holding force with plastic caps (without caps): 15 Kg (32 Kg)
- Shear force with plastic caps (without caps): 7 Kg (15 Kg)

