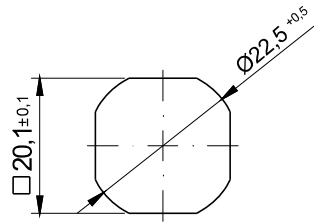
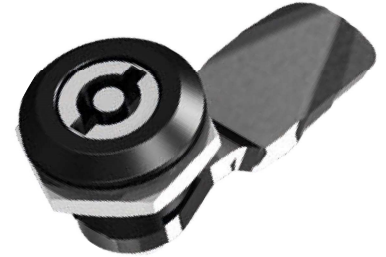


IP 66



Mounting hole

### Finishing type of the insert and the body [C]

ZAMAK 5							Polyamide		Stainless steel	
Chrome	Nickel	Galvanized	RAL 9005	RAL 7035	KTL	No coating	RAL 9005	RAL 7035	304	316
01	02	03	04	05	06	0	07	08	9.1	9.2

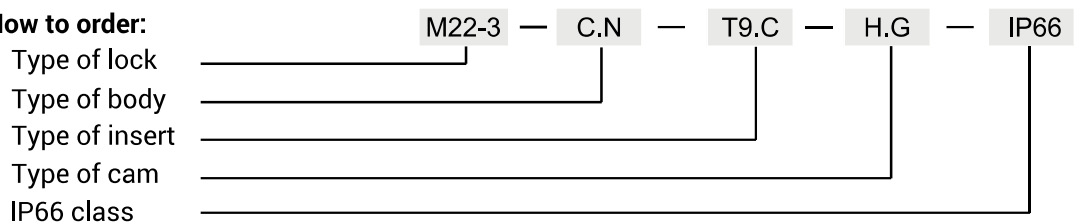
### The type of the nut [N]

	ZAMAK 5	Polyamide	Steel	Stainless steel	
				304	316
Nut without grounding	11	12	13	14	15
Nut with grounding	21	-	23	24	25

Type of the material of the insert	Inserts available										
	D3	D5	T8	T9	KW 8	S	HEX8	HEX10	M1	M2	M3
ZAMAK 5	●	●	●	-	●	●	●	●			
Polyamide	●	●	-	●	●	●	-	-	*	*	*
Stainless steel	304	●	●	●	●	●	-	-			
	316	●	●	●	●	●	-	-			

\* Precise description of inserts M1, M2, M3, check pg. 2-60

### How to order:



where C,N, G stand for:

C - type of the material and finishing of the surface

N - type of nut

H.G - the cam unbending dimension to be chosen from pages 1C-7 to 1C-20

### Notice:

Lock M22-3 is compatible with all cams from range : 11, 12, 13, 14, 18, 31, 32, 33, 34, 38, JZ-002, JK-1610