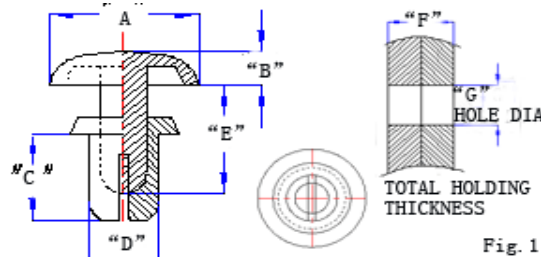
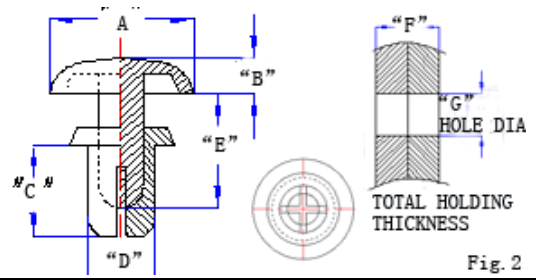


# Snap Rivet



Material: Nylon 6			Standard Pack: 1000pcs/bag						
Part No.	Hole Dia	Panel Thick.	"A"	"B"	"C"	"D"	"E"	Extracti on Force	Fig
GR2024	2.1	0.6-1.2	4.2	1.2	2.4	2.0	2.8	3KG	1
GR2032		1.3-2.0			3.2		3.8		
GR2040		2.1-2.8			4.0		5.5		
GR2048		2.9-3.6			4.8		7.2		
GR2056		3.7-4.4			5.6				
GR2064		4.5-5.2			6.4				
GR2632	2.7	1.0-2.0	5.0	1.4	3.2	2.6	4.6	5KG	
GR2642		2.1-3.0			4.2		6.2		
GR2648		2.7-3.6			4.8		7.8		
GR2655		3.4-4.3			5.5				
GR2664		4.3-5.2			6.4				
GR2672		5.1-6.0			7.2				
GR3035	3.1	1.0-2.0	6.4	1.6	3.5	3	5.1	8KG	
GR3045		2.0-3.0			4.5		6.1		
GR3055		3.0-4.0			5.5		7.1		
GR3065		4.0-5.0			6.5				
GR3075		5.0-6.0			7.5		9		
GR3080		5.5-6.5			8.0				
GR3090		6.5-7.5			9.0		11		
GR3100		7.5-8.5			10.0				
GR3145		11.5-13			14.5		15.5		
GR3230		20.5-21.5			23.0		24		

# Snap Rivet



Material: Nylon 6			Standard Pack: 1000pcs/bag						
Part No.	Hole Dia	Panel Thick.	"A"	"B"	"C"	"D"	"E"	Extract ion	Fig
GR3535	3.6	1.1-2.1	6.4	1.6	3.5	3.5	5.1	12KG	2
GR3545		2.2-3.1			4.5		6.1		
GR3550		2.7-3.6			5		7.1		
GR3555		3.2-4.1			5.5				
GR3560		3.7-4.6			6		9		
GR3570		4.7-5.6			7				
GR3580		5.7-6.6			8				
GR4050	4.1	2.5-3.5	8	1.8	5	4	7.1		
GR4060		3.5-4.5			6		9		
GR4070		4.5-5.5			7				
GR4080		5.5-6.5			8		11		
GR4090		6.5-7.5			9				
GR4100		7.5-8.5			10		14		
GR4120		9.0-10.5			12				
GR5045	5.1	1.5-2.5	9	2.2	4.5	5	6.5		
GR5055		2.5-3.5			5.5		8.5		
GR5065		3.5-4.5			6.5				
GR5075		4.5-5.5			7.5		10.5		
GR5085		5.5-6.5			8.5				
GR5095		6.5-7.5			9.5		12		
GR5105		7.5-8.5			10.5				
GR6060	6.1	2.5-4.0	12	2.5	6	6	9	30KG	
GR6080		4.0-5.5		3	8		10		