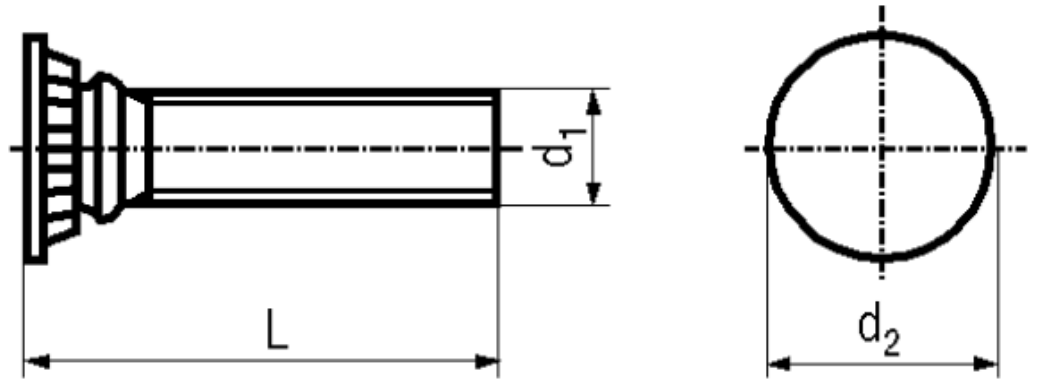


BN 3332

Self clinching captive studs
heat-treated



| | | | |
|----------|------------------|----------|------------|
| Material | Steel | Hardness | 300-380 HV |
| Surface | zinc plated blue | | |

| Article No. - 1536788 | |
|----------------------------|-----|
| d ₁ | M6 |
| L | 25 |
| d ₂ | 8 |
| Min. sheet metal thickness | 1,5 |
| Drill-ø | 6,1 |
| Distance to edge | 8 |