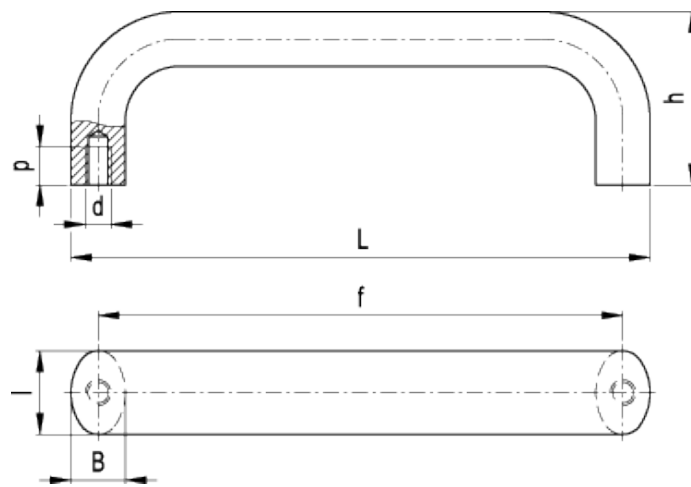


GN 565

Handles



technical informations

Material

Aluminium. Oval cross section bar.

- Version BL: natural aluminium, bright finish.
- Version SW: RAL 9005 black colour, matte finish, epoxy resin coating.
- Version EL: anodised, natural colour, matte finish.
- Version RT: RAL 3000 red colour, epoxy resin coating.

Assembly

Tapped blind holes.

Special executions on request (For sufficient quantities)

Different lengths.

Standard Elements	Main dimensions					Mounting holes		Weight
Description	L	f	h	B	l	d	p	g
GN 565-20-100-*	113	100	49	13	20	M6	10	87
GN 565-20-112-*	125	112	49	13	20	M6	10	97
GN 565-20-117-*	130	117	49	13	20	M8	10	-
GN 565-20-120-*	132	120	49	13	20	M6	10	-
GN 565-20-128-*	141	128	51	13	20	M6	10	107
GN 565-20-160-*	173	160	51	13	20	M6	10	127
GN 565-26-112-*	129	112	55	17	26	M8	12	160
GN 565-26-117-*	134	117	55	17	26	M8	12	166
GN 565-26-120-*	137	120	55	17	26	M8	12	-
GN 565-26-125-*	142	125	55	17	26	M8	12	180
GN 565-26-128-*	145	128	55	17	26	M8	12	183
GN 565-26-160-*	177	160	57	17	26	M8	12	211
GN 565-26-179-*	196	179	57	17	26	M8	12	234
GN 565-26-192-*	209	192	57	17	26	M8	12	245
GN 565-26-300-*	317	300	57	17	26	M8	12	350
GN 565-26-400-*	417	400	57	17	26	M8	12	445
GN 565-26-500-*	517	500	57	17	26	M8	12	538

* Complete the description of the standard item needed by adding the index of the finish: BL (natural aluminium), SW (black), EL (natural anodised aluminium), RT (red).

This product had the following design awards:



ELESA and GANTER models all rights reserved in accordance with the law. Always mention the source when reproducing our drawings.

STANDARD MACHINE ELEMENTS WORLDWIDE