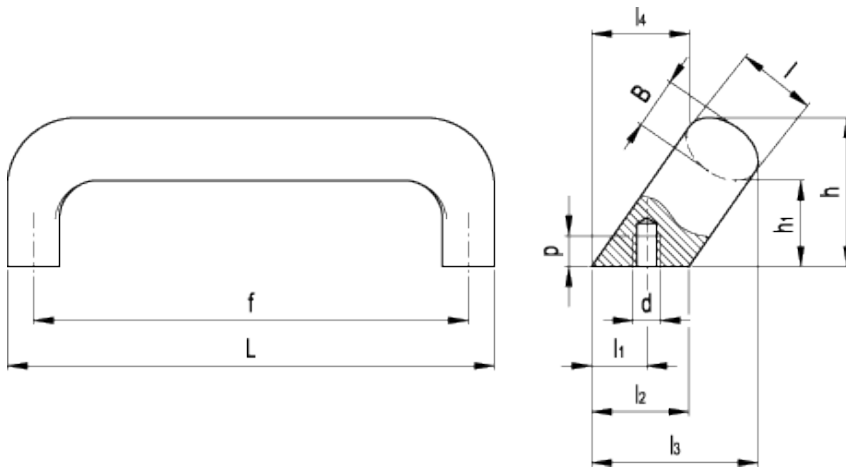


GN 565.2

Inclined handles



technical informations

Material

Aluminium. Oval cross section bar.

- Version BL: natural aluminium.
- Version SW: RAL 9005 black colour, matte finish, epoxy resin coating.
- Version EL: anodised, natural colour, matte finish.

Assembly

Tapped blind holes.

Special executions on request (For sufficient quantities)

Different lengths.

Standard Elements	Main dimensions											Mounting holes		Weight
Description	L	f	h	h ₁	B	l	l ₁₊₁	l ₂	l ₃	l ₄	d	p	g	
GN 565.2-20-112-BL	125	112	48	32	13	20	13.5	24	50	32	M6	10	99	
GN 565.2-20-112-SW	125	112	48	32	13	20	13.5	24	50	32	M6	10	100	
GN 565.2-20-112-EL	125	112	48	32	13	20	13.5	24	50	32	M6	10	99	
GN 565.2-20-128-BL	141	128	48	32	13	20	13.5	24	50	32	M6	10	110	
GN 565.2-20-128-SW	141	128	48	32	13	20	13.5	24	50	32	M6	10	112	
GN 565.2-20-128-EL	141	128	48	32	13	20	13.5	24	50	32	M6	10	110	
GN 565.2-26-128-BL	145	128	54	34	17	26	18	32	57	34	M8	12	190	
GN 565.2-26-128-SW	145	128	54	34	17	26	18	32	57	34	M8	12	192	
GN 565.2-26-128-EL	145	128	54	34	17	26	18	32	57	34	M8	12	190	
GN 565.2-26-160-BL	177	160	54	34	17	26	18	32	57	34	M8	12	222	
GN 565.2-26-160-SW	177	160	54	34	17	26	18	32	57	34	M8	12	225	
GN 565.2-26-160-EL	177	160	54	34	17	26	18	32	57	34	M8	12	222	



ELESA and GANTER models all rights reserved in accordance with the law. Always mention the source when reproducing our drawings.

STANDARD MACHINE ELEMENTS WORLDWIDE