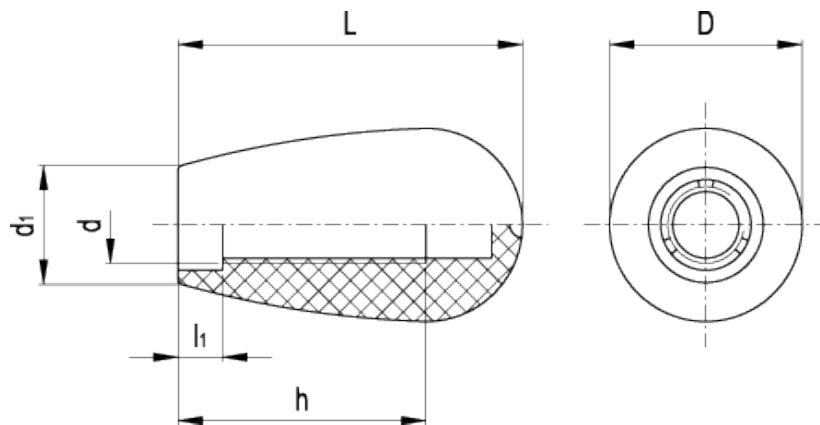


I.622

Handles



technical informations

Material

Polyamide based (PA) technopolymer. Resistant to solvents, oils, greases and other chemical agents.

Colour

Six standard colours: RAL 9005 black, RAL 2004 orange, RAL 7035 grey, RAL 1021 yellow, RAL 5024 light-blue, RAL 3000 red. Glossy finish.

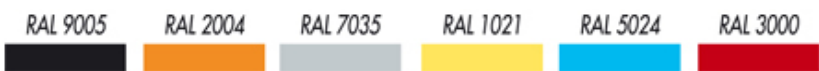


Assembly

Tapped blind hole.

Special executions on request (For sufficient quantities)

Different RAL colours.



Standard Elements							Main dimensions			Mounting hole			Weight
Black	Orange	Grey	Yellow	Light-blue	Red		D	L	d ₁	d	h	l ₁	g
Code						Description							
120911	120912	120913	120914	120915	120916	I.622/25-M6*	16	25	12	M6	16	3.5	4
120951	120952	120953	120954	120955	120956	I.622/30-M8*	20	32	14	M8	20	3.5	7
120991	120992	120993	120994	120995	120996	I.622/40-M8*	26	42	17	M8	30	5	18
121001	-	-	121004	-	-	I.622/40-M10*	26	42	17	M10	30	5	16
121061	121062	121063	121064	121065	121066	I.622/55-M10*	34	54.5	21	M10	35	8	34
121071	121072	-	121074	-	-	I.622/55-M12*	34	54.5	21	M12	35	8	32

* Complete the description of the standard item needed by adding one of the colours listed in the code column.



ELESA and GANTER models all rights reserved in accordance with the law. Always mention the source when reproducing our drawings.

STANDARD MACHINE ELEMENTS WORLDWIDE