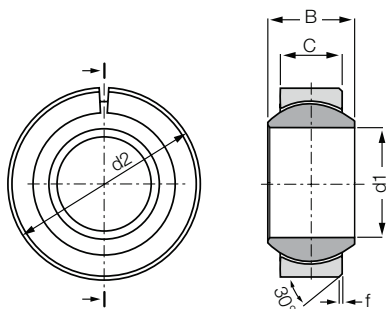


## Spherical bearing: EGLM Low-cost



- Easy to fit
- Cost-effective
- Chemical- and corrosion-resistant
- Very robust
- Compensation of misalignment errors

## Order key

Type	Size [mm]	Version
------	-----------	---------

**E GL M - 15 - LC**

Dimensional series E	Pressfit spherical bearings	Metric	Inner Ø	Low-cost
----------------------	-----------------------------	--------	---------	----------

- i Material:**  
 Housing: **igumid G** ▶ Page 1496  
 Spherical ball: **iglidur® W300** ▶ Page 153  
 Other spherical balls upon request  
 ▶ Page 763

- 🖱 Lifetime calculation online**  
 ▶ [www.igus.eu/igubal-expert](http://www.igus.eu/igubal-expert)

## Technical data and dimensions [mm]

Part No.	Max. static compressive strength		Max. tightening torque through ball [Nm]	d1 E10	d2	B	C	f	Max. pivot angle	Weight [g]
	radial	axial <sup>29)</sup>								
	[N]	[N]								
<b>EGLM-15-LC</b>	5,500	1,000	30	15	26	12	9.0	0.5	21°	4.5
<b>EGLM-16-LC</b>	6,000	1,150	32	16	28	13	9.5	0.5	21°	6
<b>EGLM-20-LC</b>	9,000	1,400	40	20	35	16	12	1.0	18°	11
<b>EGLM-25-LC</b>	14,000	2,900	55	25	42	20	16	1.0	16°	20
<b>EGLM-30-LC</b>	17,000	4,000	70	30	47	22	18	1.0	13°	26

<sup>29)</sup> The maximum static axial load is determined in a remote location hole