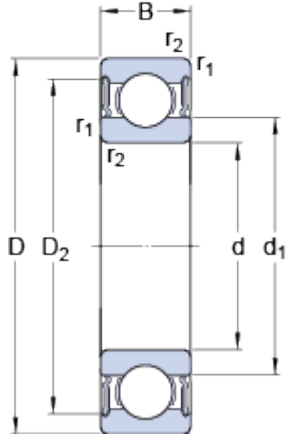


# 6010-2RS1

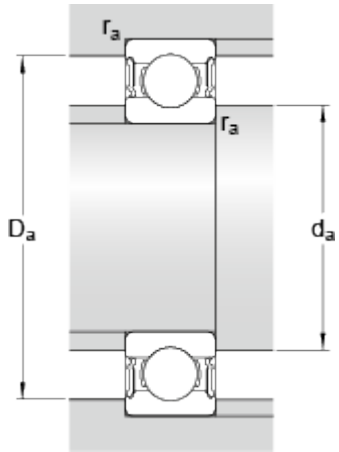
SKF Explorer

## Dimensions



d	50	mm
D	80	mm
B	16	mm
d <sub>1</sub>	59.75	mm
D <sub>2</sub>	72.8	mm
r <sub>1,2</sub>	min. 1	mm

## Abutment dimensions



d <sub>a</sub>	min. 54.6	mm
d <sub>a</sub>	max. 59.7	mm
D <sub>a</sub>	max. 75.4	mm
r <sub>a</sub>	max. 1	mm

## Calculation data

Basic dynamic load rating	C	22.9	kN
Basic static load rating	C <sub>0</sub>	15.6	kN
Fatigue load limit	P <sub>u</sub>	0.71	kN
Limiting speed		5000	r/min
Calculation factor	k <sub>r</sub>	0.025	
Calculation factor	f <sub>0</sub>	14.7	

## Mass

Mass bearing	0.269	kg
--------------	-------	----