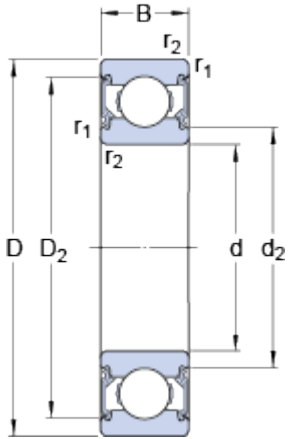


6300 - 2 RSH

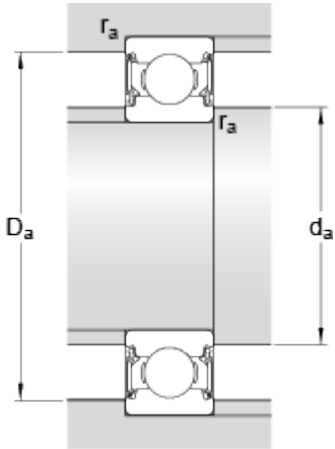
SKF Explorer

Dimensions



d	10	mm
D	35	mm
B	11	mm
d ₂	≈ 15.5	mm
D ₂	≈ 28.68	mm
r _{1,2}	min. 0.6	mm

Abutment dimensions



d _a	min. 14.2	mm
d _a	max. 15.5	mm
D _a	max. 30.8	mm
r _a	max. 0.6	mm

Calculation data

Basic dynamic load rating	C	8.52	kN
Basic static load rating	C ₀	3.4	kN
Fatigue load limit	P _u	0.143	kN
Limiting speed		15000	r/min
Calculation factor	k _r	0.03	
Calculation factor	f ₀	11	

Mass

Mass bearing		0.054	kg
--------------	--	--------------	----

