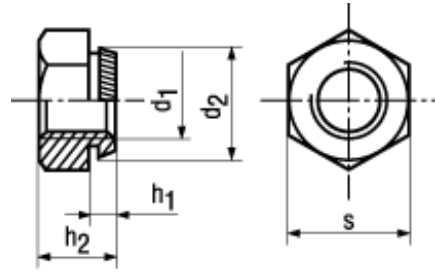




550 HV



**BN 202**

**Hex self clinching nuts**

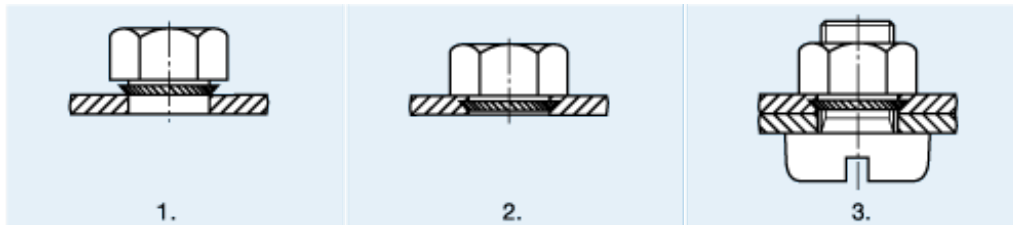
Steel case-hardened 550 HV

zinc plated yellow



ISO 4042

Fasteners hardness  $\geq 320$  HV with electroplated coatings:  
Susceptible to hydrogen embrittlement!  
Further notice to residual risks can be found in the introduction section.



1. Centering the nut over the drilled or punched bore.
2. Press in the nut by using either a hammer or a rotating punch.
3. Fasten the screw from the opposite side.

Article#	d <sub>1</sub>	d <sub>2</sub>	s	Bore Ø H11	Distance to center	h <sub>2</sub>	Sheet thickness min.	h <sub>1</sub>
1098578	M3	4,7	5,5	4,5	5,6	3	1	0,9
1098586	M4	5,7	7	5,5	6,7	3,2	1	0,9
1098594	M5	6,75	8	6,5	7	4	1	0,9
1098608	M6	8,25	10	8	8,7	5	1	0,9
1145886	M8	10,35	13	10	9,5	6,5	2	1,8
1145894	M10	12,85	15	12,5	10	8	2	1,8
1145908	M12	14,85	17	14,5	12	10	3	2,8
1145916	M16	18,85	22	18,5	16	13	3	2,4