



EMPTY ENCLOSURE

TG ABS 2516-9-to

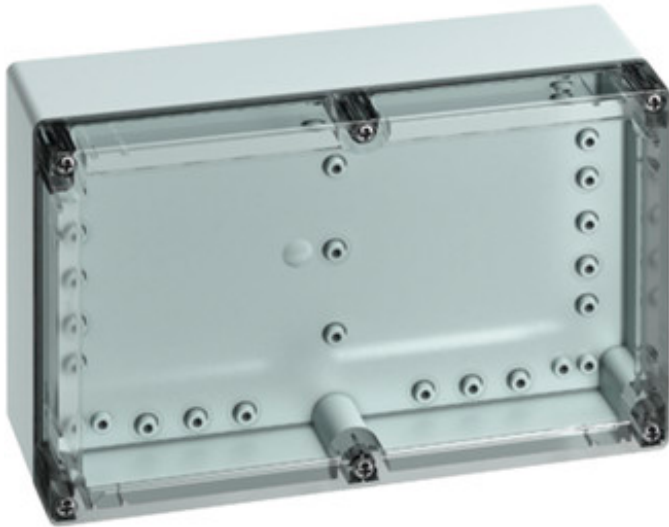
TG ABS 2516-9-to

Empty enclosure

CUSTOMIZABLE

252 x 162 x 90 mm
Article number: 10101201

Empty enclosure, Base: ABS, light grey similar to RAL 7035, Cover: polycarbonate, transparent, with quick closing, with cover retainer



Technical data

Measures

Width:	252 mm
Length:	162 mm
Height:	90 mm
Inner height:	74 mm

Material:

Box:	ABS, grey similar RAL 7035
Cover:	Polycarbonate, transparent
Sealing:	Polyurethane
Cover screw:	stainless steel V2A, fast-closing
material:	ABS

Accessory

DAE M12 - Pressure balance element

LFR - Stepped drill

NS 35-220 - Standard rail

TG ABL - External fixing lugs kit

TG DVS-57 - Cover retainer

TG ISS - Interior hinge set

TG MPI-2516 - Mounting plate

TG MPS-2516 - Mounting plate

TG PST2 - Sealing kit

TS 15-220 - Standard rail



EMPTY ENCLOSURE

TG ABS 2516-9-to

Other attributes

Ingress protection:	IP66/IP67 - acc. EN60529 / DIN VDE 0470-1
Impact resistance:	IK07 acc. DIN EN 5012 / VDE 0470 Part 100
Protection class:	II - isolate protection acc. VDE 0106
Rated insulation voltage AC:	690 V
Rated insulation voltage DC:	1000 V
Heavy metals-free:	Yes
PVC-free:	Yes
Silicone-free:	Yes
Cable entries:	No
Combustion behaviour acc. to UL 94:	HB acc. UL94
Combustion behaviour acc. to VDE:	650°C acc. VDE 0471/ EN 60695
weatherproof:	No
Cover screw torque:	1.5 N m

Environmental attributes

Ambient temperature (min.):	-25 °C
Ambient temperature (max.):	40 °C
Ambient temperature (24 h):	35 °C
Max. rel. humidity at 25° C (short term):	95%
Max. rel. humidity at 40° C:	50%