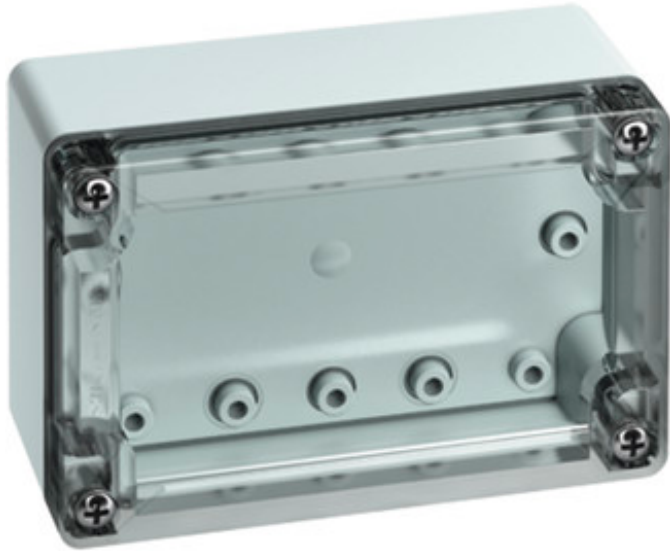




EMPTY ENCLOSURE

# TG ABS 1208-6-to



## TG ABS 1208-6-to

Empty enclosure

**CUSTOMIZABLE**

122 x 82 x 55 mm  
Article number: 10100401

Empty enclosure, Base: ABS, light grey similar to RAL 7035, Cover: polycarbonate, transparent, with quick closing, with cover retainer



## Technical data

### Measures

Width:	122 mm
Length:	82 mm
Height:	55 mm
Inner height:	39 mm

### Material:

Box:	ABS, grey similar RAL 7035
Cover:	ABS, grey similar RAL 7035
Sealing:	Polyurethane
Cover screw:	stainless steel V2A, fast-closing
material:	ABS

## Accessory

DAE M12 - Pressure balance element

LFR - Stepped drill

NS 35-104 - Standard rail

TG ABL - External fixing lugs kit

TG DVS-42 - Cover retainer

TG MPI-1208 - Mounting plate

TG MPS-1208 - Mounting plate

TG PST1 - Sealing kit

TS 15-104 - Standard rail

## Environmental attributes

Ambient temperature (min.):	-25 °C
Ambient temperature (max.):	40 °C
Ambient temperature (24 h):	35 °C
Max. rel. humidity at 25° C (short term):	95%
Max. rel. humidity at 40° C:	50%



EMPTY ENCLOSURE

# TG ABS 1208-6-to

## Other attributes

Ingress protection:	IP66/IP67 - acc. EN60529 / DIN VDE 0470-1
Impact resistance:	IK07 acc. DIN EN 5012 / VDE 0470 Part 100
Protection class:	II - isolate protection acc. VDE 0106
Rated insulation voltage AC:	690 V
Rated insulation voltage DC:	1000 V
Heavy metals-free:	Yes
PVC-free:	Yes
Silicone-free:	Yes
Cable entries:	No
Combustion behaviour acc. to UL 94:	HB acc. UL94
Combustion behaviour acc. to VDE:	650°C acc. VDE 0471/ EN 60695
weatherproof:	No
Cover screw torque:	1.5 N m