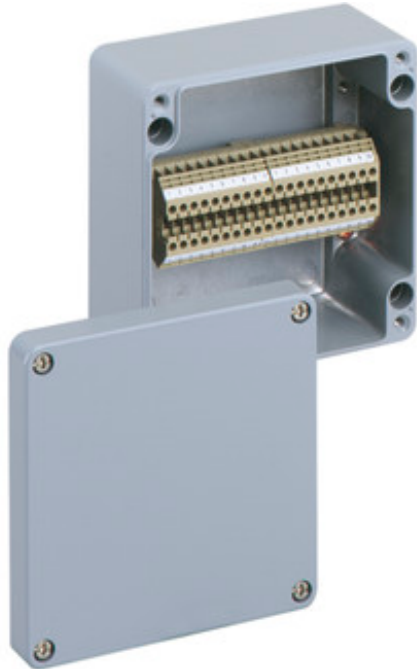




TERMINAL BLOCK ENCLOSURE

# ALR 1616-4<sup>2</sup>



## ALR 1616-4<sup>2</sup>

Terminal block enclosure

**CUSTOMIZE**

160 x 160 x 91 mm  
Article number: 16041101

Terminal block enclosure - Industrial Quality - Aluminium, powder-coated painting silver grey RAL 7001

fitted with 20 screw terminals 4 mm<sup>2</sup>



## Technical data

### Measures

Width:	160 mm
Length:	160 mm
Height:	91 mm

### Material:

Box:	Aluminium Si 12, silver grey, similar to RAL 7001
Cover:	Aluminium Si 12, silver grey, similar to RAL 7001
Sealing:	Polyurethane
material:	Aluminium

## Accessory

AL ALS-gro - External attachment set

AL ASS - External hinge set

## Environmental attributes

Max. rel. humidity at 25° C (short term):	95%
Max. rel. humidity at 40° C:	50%
Ambient temperature (24 h):	60 °C
Ambient temperature (max.):	75 °C
Ambient temperature (min.):	-35 °C



TERMINAL BLOCK ENCLOSURE

# ALR 1616-4<sup>2</sup>

## Other attributes

Ingress protection:	IP66 - acc. EN 60529 / DIN VDE 0470-1
Impact resistance:	IK09 acc. DIN EN 50102 / VDE 470 segment 100
Heavy metals-free:	Yes
PVC-free:	Yes
Silicone-free:	Yes
Cable entries:	No
Fitted for outdoor application:	Yes
Equipment:	screw terminals
Number terminals:	20 Quantity
Rated cross section:	4 mm <sup>2</sup>