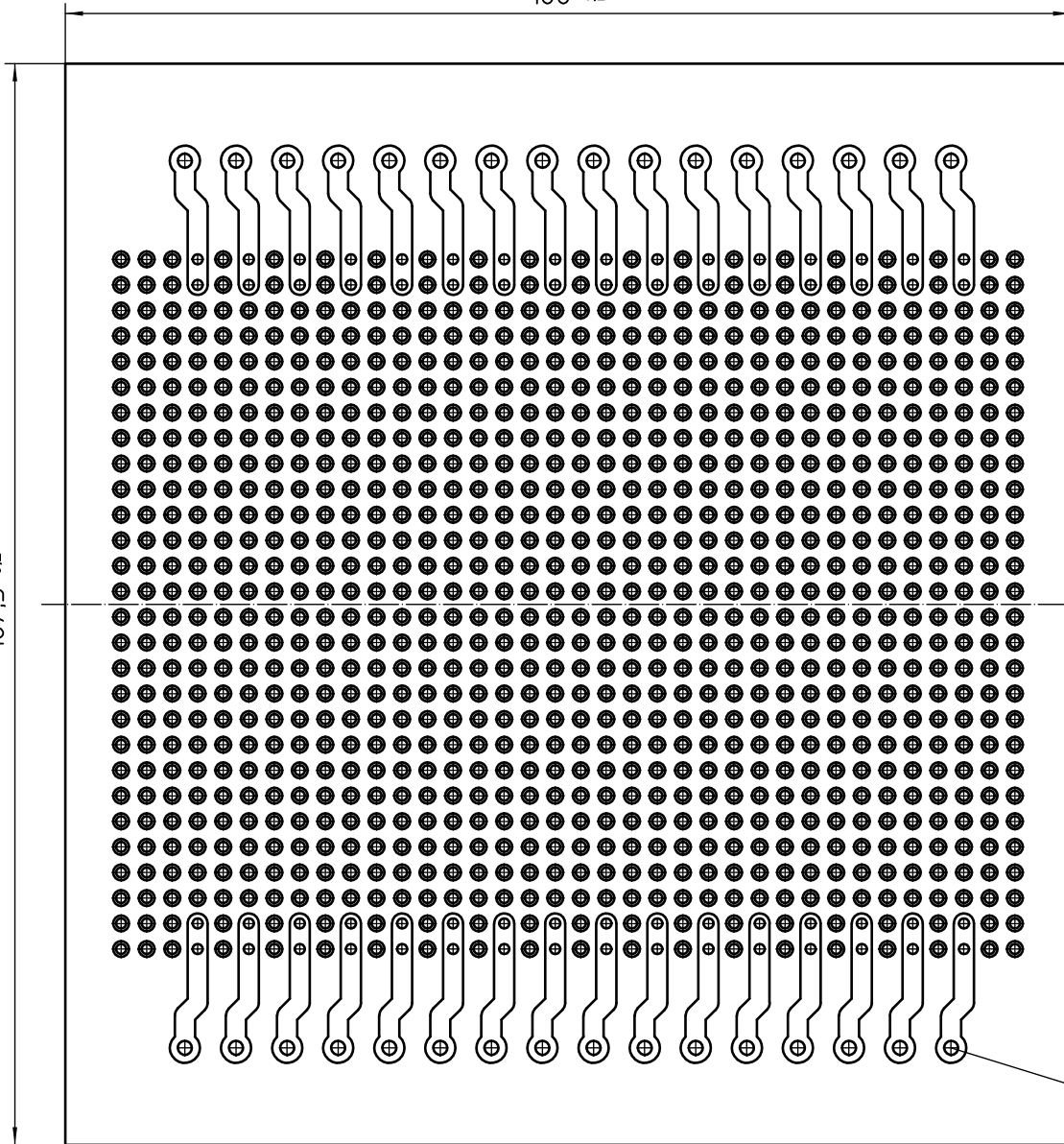


107,5 ±0,2

100 ±0,2



General Information

- Simplified representation
- Document excluded from change process
- CAD Data see Download-Center on www.phoenixcontact.com
- Linear dimensions [mm]
- Dot matrix pitch: 2,54mm ; drill size: $\phi 1$
- Thickness: 1,6±0,2
- Application: UM-BASIC 108 100MM DEV-KIT

Terminal area for:

A) SMKDS 2,5/ 8-5,08

	document-No. / RI	date	scale
	00861994 / 00	25.03.2015	2:1
	ident.-No.	document-type	
	-----	PCB outline	
page 1	of 1	description	
		UM PCB 108 DOT MATRIX	