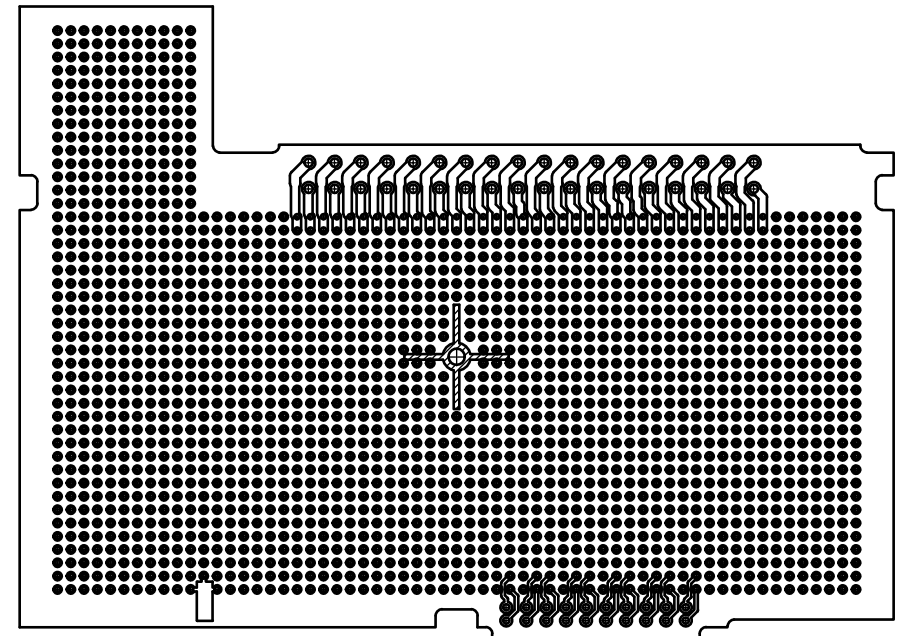
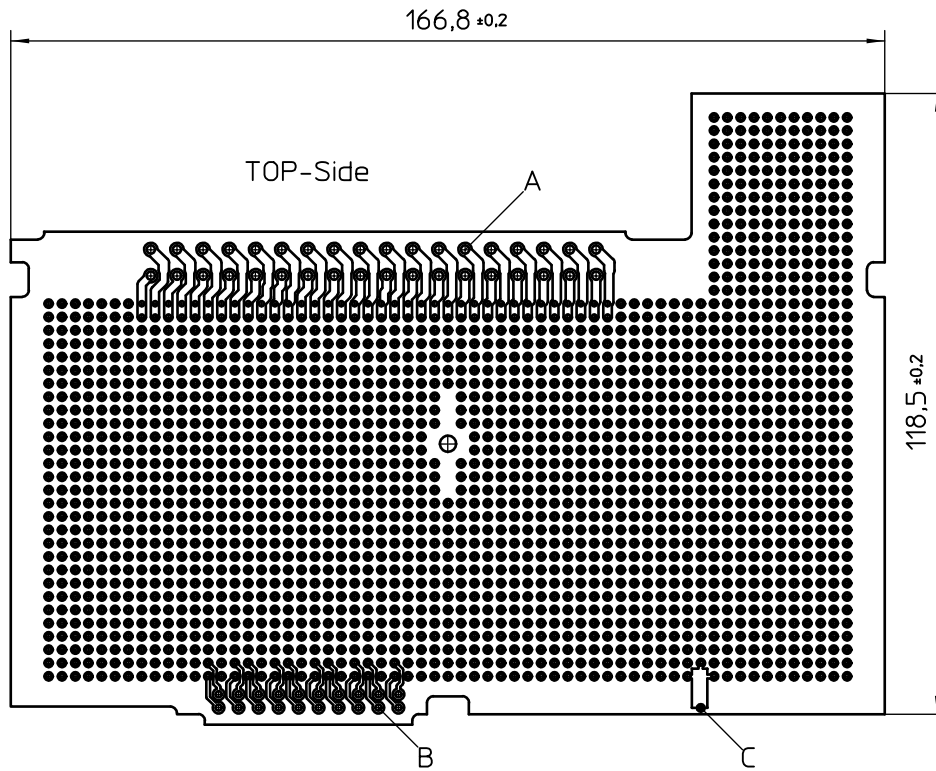


Transfer or duplication of this document as well as the utilisation or communication of its content are not permitted unless express consent is granted. Violations give rise to claims for damages. All rights reserved in case of patent, utility model or design patent registrations.

Weitergabe sowie Vervielfältigung dieses Dokuments, Verwertung und Mitteilung seines Inhalts sind verboten, soweit nicht ausdrücklich gestattet. Zuwiderhandlungen verpflichten zu Schadensersatz. Alle Rechte für den Fall der Patent-, Gebrauchsmuster- oder Designeintragung vorbehalten.



General Information

- Simplified representation
- Document excluded from change process
- CAD Data see Download-Center on www.phoenixcontact.com
- Linear dimensions [mm]
- Dot matrix pitch: 2,54mm ; drill size: $\varnothing 1$
- Thickness: 1,6±0,2
- Restricted area
- Application: ME-PLC 40 DEV-KIT

Terminal area for:

- A) CCDN 2,5/18-G1 P26 THR
- B) IMC 1,5/10-G-3,81
- C) Pad for FE CONTACT, surface: Sn

DIN A3	document-No. / RI	date	scale
	00862015 / 00	25.03.2015	1:1
	ident.-No.	document-type	
	-----	PCB outline	
description			
		ME PLC PCB BUS10 DOT MATRIX	
page 1	of 1		