

ENCLOSURE FOR 4-POSITION SELECTOR SWITCH AND COORDINATE SWITCH 22MM, ROUND, ENCLOSURE MATERIAL METAL, ENCLOSURE TOP PART GRAY, 1 COMMAND POINT METAL, UNEQUIPPED UNEQUIPPED



Figure similar

|                     |                                  |
|---------------------|----------------------------------|
| product brand name  | SIRIUS ACT                       |
| Product designation | Commanding and signaling devices |

**Enclosure:**

|                                |                         |
|--------------------------------|-------------------------|
| Design of the housing          | Command point in center |
| Shape of the enclosure front   | Square                  |
| Material of the enclosure      | metal                   |
| Number of command points       | 1                       |
| Product component              |                         |
| • protective collar            | No                      |
| Color                          |                         |
| • of top part of the enclosure | grey                    |
| Mounting type of the enclosure | Vertical / horizontal   |

**General technical data:**

|   |                             |
|---|-----------------------------|
| Protection class IP                             | IP66, IP67, IP69(IP69K)     |
| Degree of protection NEMA rating                | NEMA 1, 2, 3, 3R, 4, 4X, 12 |
| Shock resistance                                |                             |
| • for railway applications acc. to DIN EN 61373 | Category 1, Class B         |
| Vibration resistance                            |                             |

• for railway applications acc. to DIN EN 61373

Category 1, Class B

#### Mechanical data:

Cable entry type Without

#### Installation/ mounting/ dimensions:

|                   |         |
|-------------------|---------|
| Height            | 89.4 mm |
| Width             | 85 mm   |
| Depth             | 64 mm   |
| Mounting diameter | 22.3 mm |

#### Certificates/approvals

General Product Approval

For use in hazardous locations

Declaration of Conformity



[Herstellereklärung](#)



Test Certificates

other

[Werksbescheinigung](#)

[spezielle Prüfbescheinigungen](#)

[Bestätigungen](#)

#### Further information

**Information- and Downloadcenter (Catalogs, Brochures,...)**

<http://www.siemens.com/industrial-controls/catalogs>

**Industry Mall (Online ordering system)**

<https://mall.industry.siemens.com/mall/en/en/Catalog/product?mlfb=3SU18511AA001AA1>

**Cax online generator**

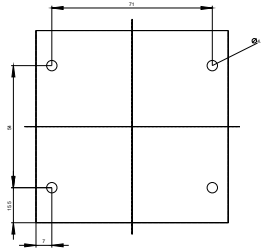
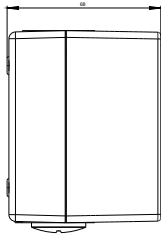
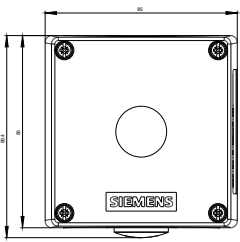
<http://support.automation.siemens.com/WW/CAXorder/default.aspx?lang=en&mlfb=3SU18511AA001AA1>

**Service&Support (Manuals, Certificates, Characteristics, FAQs,...)**

<https://support.industry.siemens.com/cs/ww/en/ps/3SU18511AA001AA1>

**Image database (product images, 2D dimension drawings, 3D models, device circuit diagrams, EPLAN macros, ...)**

[http://www.automation.siemens.com/bilddb/cax\\_de.aspx?mlfb=3SU18511AA001AA1&lang=en](http://www.automation.siemens.com/bilddb/cax_de.aspx?mlfb=3SU18511AA001AA1&lang=en)



last modified:

12.04.2016