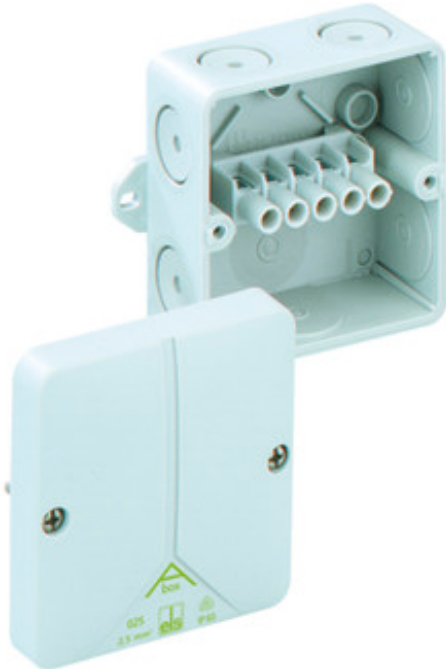




JUNCTION BOX

Abox 040 AB-4²



Abox 040 AB-4²

Junction box

CUSTOMIZE

93 x 93 x 55 mm
Article number: 80540701

Junction box acc. to DIN EN 60670 (VDE 0606), Ui=690V, with self-sealing, soft inlet membranes, M20, seal range 2 - 16 mm, with external fixing lugs

Grey, with screw terminal, 5-pole - 2.5/4 mm² (4 x 1.5² / 4 x 2.5² / 3 x 4²)



Technical data

Measures

Width:	93 mm
Length:	93 mm
Height:	55 mm

Material:

Cover:	polystyrene
material:	polystyrene
Box:	polystyrole, membrane out of TPE
Cover screw:	stainless steel V2A

Entries

Pre-embossings, top:	2 x M20
Pre-embossings, left/right:	2 x M20
Pre-embossings, bottom:	1 x M20
Pre-embossings, rear side:	1 x M20

Certificates



Accessory

- DMS M20/w - M20, white
- Abox 025/040 KLS-2,5²/4² - Terminal block
- BST M20/sw - Ventilation seal
- AST M20 - Attachment bushes
- BST M20 - Ventilation seal
- DMS M20 - Double-membrane seals
- KS M20 - Combi set
- KVR M20-GDB/MGM - Cable gland
- KVR M20-MGM - Cable gland
- MPS-KRI - Mounting plate
- RST M20 - Conduit connector
- SNI M20 - Stepped nipple
- VST M20 - Sealing plugs



JUNCTION BOX

Abox 040 AB-4²

Other attributes

Entries:	8
Rated cross section:	4 mm ²
Tackable:	No
Rated insulation voltage AC:	690 V
Explosion safety:	none
Functional integrity:	none
sealable:	Yes
Heavy metals-free:	Yes
PVC-free:	Yes
Silicone-free:	Yes
Ingress protection:	IP65 - acc. to EN 60529 / DIN VDE 0470-1
weatherproof:	No
Combustion behaviour acc. to UL 94:	HB acc. UL94
Combustion behaviour acc. to VDE:	650°C acc. VDE 0471/ EN 60695
Equipment:	Terminal
Color:	Grey
Cover screw torque:	1 N m

WNI M20 - Twist nipple

WST M20 - Twist plug

Environmental attributes

Ambient temperature (min.):	-25 °C
Ambient temperature (max.):	40 °C
Ambient temperature (24 h):	35 °C
Max. rel. humidity at 25° C (short term):	95%
Max. rel. humidity at 40° C:	50%