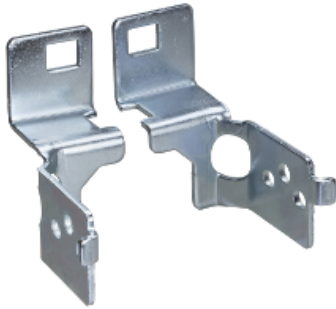




Price* : 15.50 GBP



Main

| | |
|----------------------------------|---|
| Category | Mounting accessory |
| Product or component type | Fixing bracket |
| Range compatibility | Spacial SF |
| Application | Multi-purpose |
| For enclosure nominal dimensions | - |
| Mounting location | On structure of enclosure |
| Product destination | For mounting plate |
| Device composition | 4 mounting plate fixing brackets Fixing elements |
| Quantity per set | Set of 1 |
| Material | Steel |

Complementary

| | |
|----------------------------|---------------------------------|
| Surface finish | Zinc coated |
| Fixing mode | By fixing element |
| Adjustment | Adjustable in depth every 25 mm |
| Permanent permissible load | 600 kg |

Offer Sustainability

| | |
|----------------------------------|---|
| Sustainable offer status | Green Premium product |
| RoHS (date code: YYWW) | Compliant - since 0940 - Schneider Electric declaration of conformity Schneider Electric declaration of conformity |
| REACH | Reference not containing SVHC above the threshold Reference not containing SVHC above the threshold |
| Product environmental profile | Available Product Environmental Profile |
| Product end of life instructions | Need no specific recycling operations |

Contractual warranty

| | |
|-----------------|-----------|
| Warranty period | 18 months |
|-----------------|-----------|
