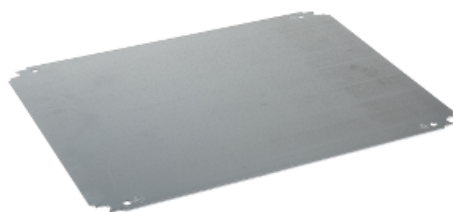


NSYMM65

Plain mounting plate H500xW600mm made of galvanised sheet steel



Price* : 21.63 GBP



Main

Range	Spacial
Accessory / separate part category	Mounting accessory
Product or component type	Mounting plate
Application	Multi-purpose
For enclosure nominal dimensions	600 mm W: 500 mm
Mounting location	Step slide Direct fixing on backstuds
Mounting plate description	Plain
Range compatibility	Spacial CRN Spacial S3D Spacial S3X Thalassa PLM
Quantity per set	Set of 1
Material	Galvanised steel

Complementary

Fixing mode	Screwed on backstuds - screw type M8 By fixing element
Permanent permissible load	90 kg
Height	550 mm
Width	450 mm
Depth	125 mm
Thickness	1.8 mm
Product weight	3.6 kg

Offer Sustainability

Sustainable offer status	Green Premium product
RoHS (date code: YYWW)	Compliant - since 0940 - Schneider Electric declaration of conformity

 [Schneider Electric declaration of conformity](#)

REACH	Reference not containing SVHC above the threshold Reference not containing SVHC above the threshold
Product environmental profile	Available  Product Environmental Profile
Product end of life instructions	Need no specific recycling operations

Contractual warranty

Warranty period	18 months
-----------------	-----------
