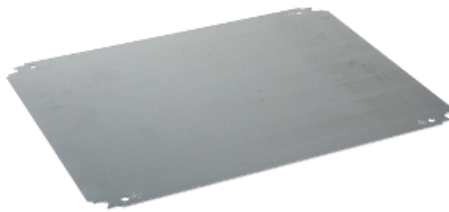


NSYMM55

Plain mounting plate H500xW500mm made of galvanised sheet steel



Price* : 17.18 GBP



Main

| | |
|------------------------------------|---|
| Range | Spacial |
| Accessory / separate part category | Mounting accessory |
| Product or component type | Mounting plate |
| Application | Multi-purpose |
| For enclosure nominal dimensions | 500 mm W: 500 mm |
| Mounting location | Step slide Direct fixing on backstuds |
| Mounting plate description | Plain |
| Range compatibility | Spacial CRN Spacial S3D Spacial S3X Thalassa PLM |
| Quantity per set | Set of 1 |
| Material | Galvanised steel |

Complementary

| | |
|----------------------------|---|
| Fixing mode | Screwed on backstuds - screw type M8 By fixing element |
| Permanent permissible load | 90 kg |
| Height | 450 mm |
| Width | 450 mm |
| Depth | 125 mm |
| Thickness | 1.8 mm |
| Product weight | 2.944 kg |
| Variant particularity | Installation in enclosures with inverted dimensions |

Offer Sustainability

| | |
|--------------------------|-----------------------|
| Sustainable offer status | Green Premium product |
|--------------------------|-----------------------|

| | |
|----------------------------------|---|
| RoHS (date code: YYWW) | Compliant - since 0940 - Schneider Electric declaration of conformity Schneider Electric declaration of conformity |
| REACH | Reference not containing SVHC above the threshold Reference not containing SVHC above the threshold |
| Product environmental profile | Available Product Environmental Profile |
| Product end of life instructions | Need no specific recycling operations |

Contractual warranty

| | |
|-----------------|-----------|
| Warranty period | 18 months |
|-----------------|-----------|