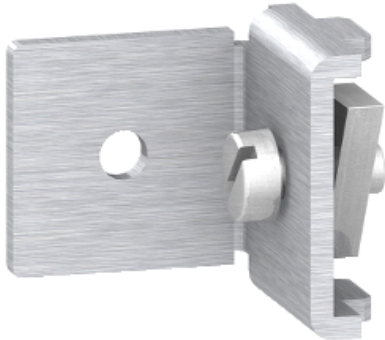




Price* : 0.86 GBP



Main

| | |
|----------------------------------|--|
| Category | Mounting accessory |
| Product or component type | Bracket |
| Range compatibility | Spacial CRN Spacial S3D Thalassa PLA Thalassa PLM Spacial S3CM |
| Application | Multi-purpose |
| For enclosure nominal dimensions | - |
| Mounting location | Aluminium upright |
| Device composition | Fixing elements 1 bracket |
| Quantity per set | Set of 10 |
| Material | Galvanised steel |

Complementary

| | |
|----------------|-------------------|
| Fixing mode | By fixing element |
| Height | 20 mm |
| Width | 30 mm |
| Depth | 30 mm |
| Product weight | 0.037 kg |

Offer Sustainability

| | |
|--------------------------|---|
| Sustainable offer status | Green Premium product |
| RoHS (date code: YYWW) | Compliant - since 0940 - Schneider Electric declaration of conformity Schneider Electric declaration of conformity |
| REACH | Reference not containing SVHC above the threshold |

Reference not containing SVHC above the threshold

| | |
|-------------------------------|--|
| Product environmental profile | Available Product Environmental Profile |
|-------------------------------|--|

| | |
|----------------------------------|---------------------------------------|
| Product end of life instructions | Need no specific recycling operations |
|----------------------------------|---------------------------------------|

Contractual warranty

| | |
|-----------------|-----------|
| Warranty period | 18 months |
|-----------------|-----------|
