

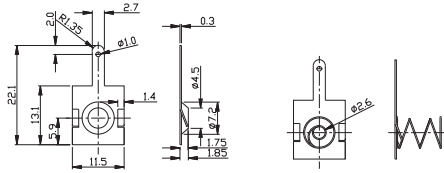
Battery Contact Kits ("AA")

AA (UM3)



G0311

30310-000(X1)+30320-000(X1)

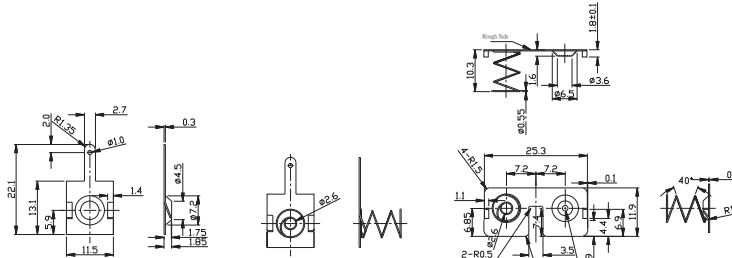


30310-000 30320-000

Part no.	Battery
G0311	AA (UM3) X 1
G0310	AA (UM3) X 2
G0313	AA (UM3) X 3
G0312	AA (UM3) X 4

G0310

30310-000(X1)+30320-000(X1)+30500-000(X1)



30310-000 30320-000 30500-000

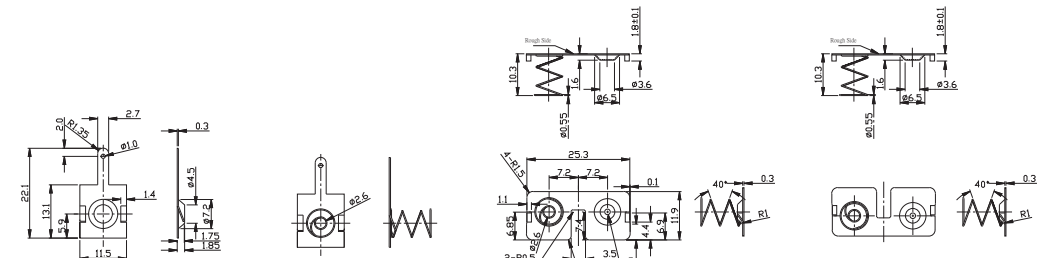
	Metal Parts	Spring
Material	SPTe (tin plate)	Steel
Finish	Tin plated	Nickel plated

● Example: G909G with G0310



G0313

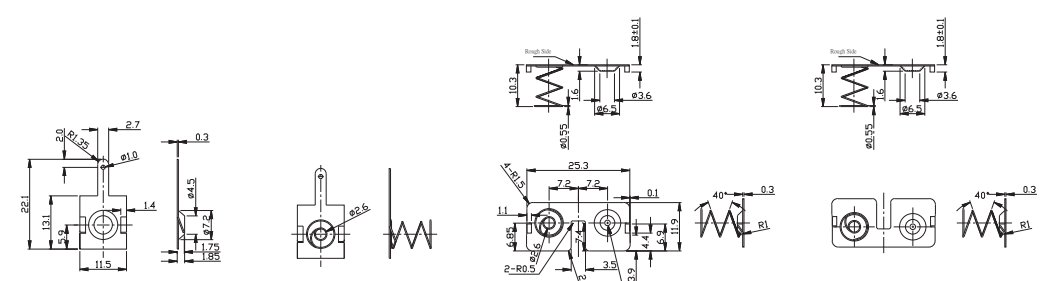
30310-000(X1)+30320-000(X1)+30500-000(X1)+30500-040(X1)



30310-000 30320-000 30500-000 30500-040

G0312

30310-000(X1)+30320-000(X1)+30500-000(X1)+30500-040(X2)



30310-000 30320-000 30500-000 30500-040

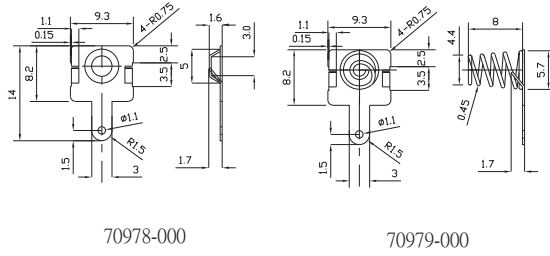
Battery Contact Kits ("AAA")

AAA (UM4)



G0411

70978-000(X1)+70979-000

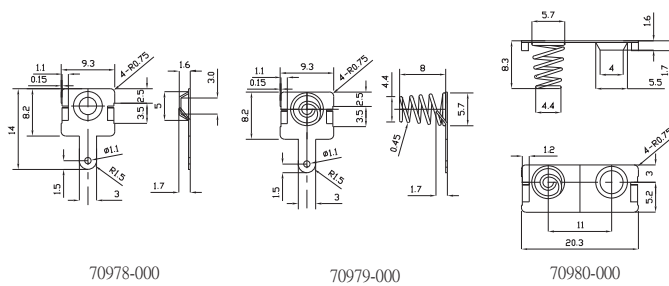


Part no.	Battery
G0411	AAA (UM4) X 1
G0410	AAA (UM4) X 2
G0413	AAA (UM4) X 3
G0412	AAA (UM4) X 4

	Metal Parts	Spring
Material	SPTe (tin plate)	Steel
Finish	Tin plated	Nickel plated

G0410

70978-000(X1)+70979-000(X1)+70980-000(X1)

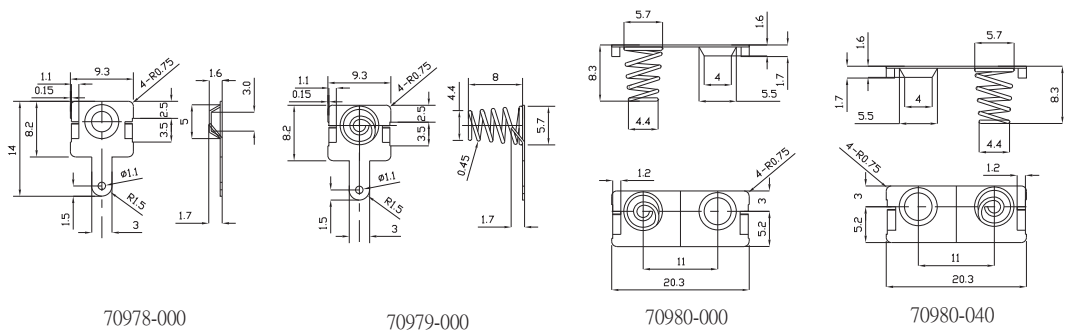


● Example: G808B(BC) with G0412



G0413

70978-000(X1)+70979-000(X1)+70980-000(X1)+70980-040(X1)



G0412

70978-000(X1)+70979-000(X1)+70980-000(X1)+70980-040(X2)

