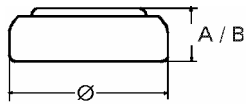


## Data Sheet

**Type Number** ..... 20390  
**Designation IEC** ..... SR54  
**System** ..... Silver oxide / Zinc /  
 NaOH - Electrolyte



**Nominal Voltage** ..... 1,55 V  
**Typical Capacity C** ..... 80 mAh  
 Load 5.6 kOhm, at 20°C down to 1.2 V

**Weight (approx.)** ..... 1,32 g  
**Volume** ..... 0,28 ccm  
**Coding**..... Date of Manufacturing  
 Month/Year

**Temperature Ranges**

	min	max.
Storage .....	-10°C	65°C
Discharge .....	-10°C	65°C

**Dimensions**

	min	max.
Diameter (Ø) .....	11,25	11,60
Height (A/B) .....	2,75	3,05

**Segment** ..... Watch

**Main Applications** ..... Watch  
 Photo  
 Electronic

**Typical Capacities (at 20°C)**

Discharge Type	Load	End Voltage: 1.2 V	
		Time:	Capacity [mAh]:
Continuous 24h/d,7d/w Current [µA]:	5600 Ω	290 h	80
	275	123	123