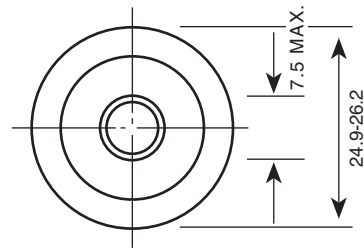


Model No.: **GP14E**

NO MERCURY ADDED	
Description	: Heavy Duty Battery, C Size
Chemical System	: Carbon Zinc
Nominal Voltage	: 1.5 Volts
Nominal Dimensions	: $\varnothing 26.2$ mm x 50.0 mm
Terminals	: Protruded positive (+) and flat negative (-) contacts
Jacket	: Metal jacket with PVC shrink tube insulation
Applications	: All electronic devices, e.g. transistor radios, cassette recorders, toys, alarm clocks, lighting, torches & portable fans.
Warranty Period	: 36 months
Average Weight	: 47.8g

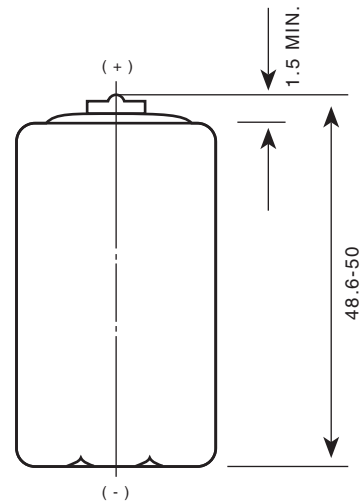
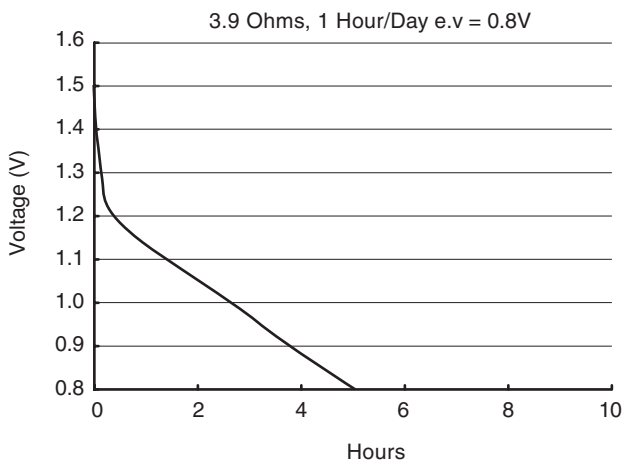


Cross References:

GP	JIS	IEC	Eveready	Duracell/ Mallory	Varta
14E	R14S	R14S	1035	M14P	2014

Typical Service Life:

Discharge Resistance	Discharge Condition	End Point Voltage	Service Life
3.9 Ohms	1 Hr/ Day	0.8V	5.0 Hrs



Unit : mm

The information (subject to change without prior notice) contained in this document is for reference only and should not be used as a basis for product guarantee or warranty. For applications other than those described here, please consult your nearest GP Sales and Marketing Office or Distributors.