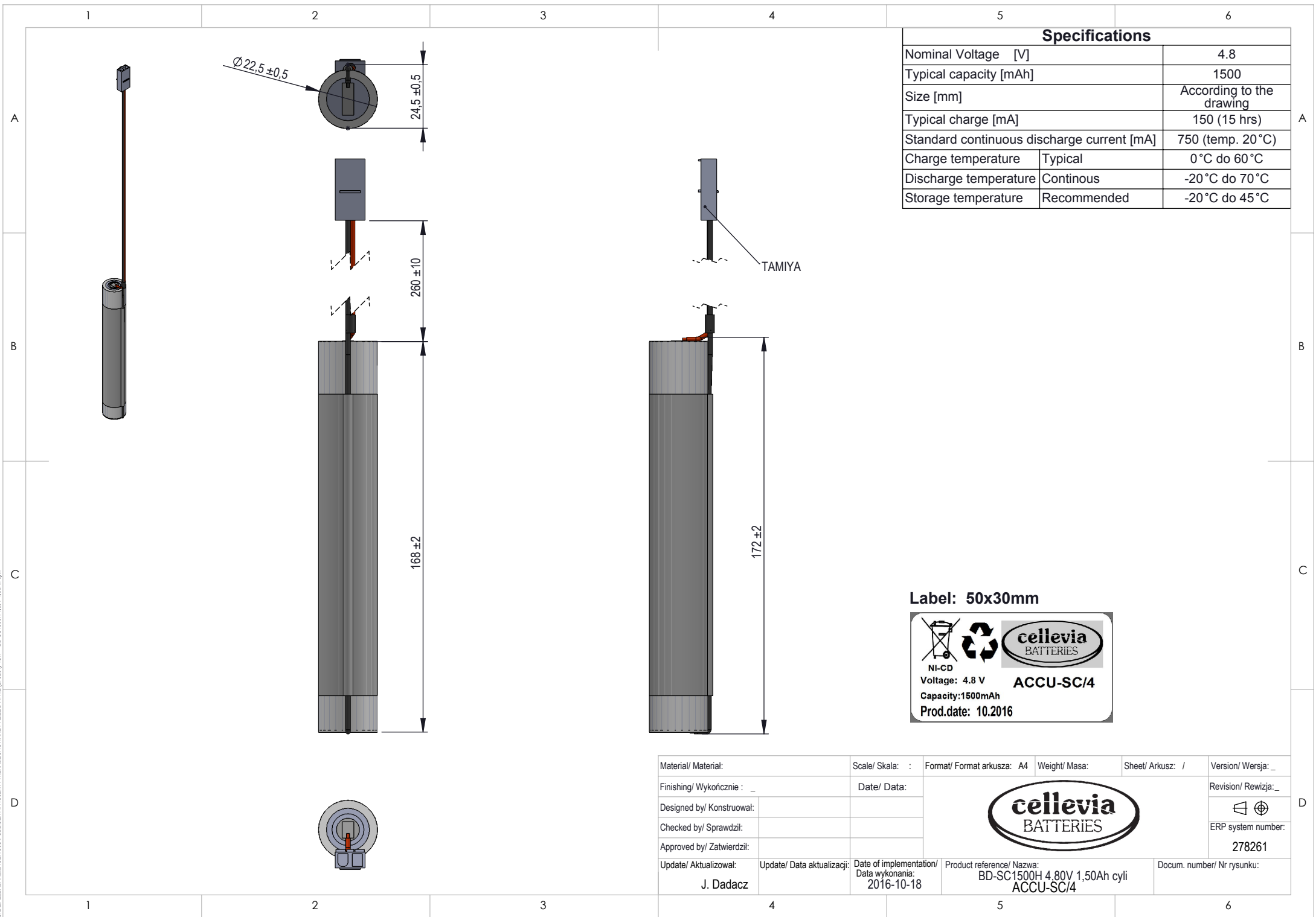
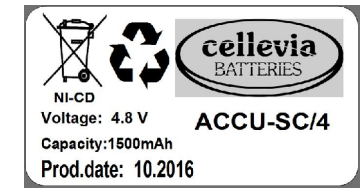


SZYBKA\_BADANIA\_ROZWOJU/PROJEKTY/NIEMODLIFIKOWANE/PRZEJAZDOWE/278261/ASIP-BD-SC1500H4.8V-1.50Ah-cyli



| Specifications                             |                          |               |
|--|--------------------------|---------------|
| Nominal Voltage [V]                        | 4.8                      |               |
| Typical capacity [mAh]                     | 1500                     |               |
| Size [mm]                                  | According to the drawing |               |
| Typical charge [mA]                        | 150 (15 hrs)             |               |
| Standard continuous discharge current [mA] | 750 (temp. 20°C)         |               |
| Charge temperature                         | Typical                  | 0°C do 60°C   |
| Discharge temperature                      | Continous                | -20°C do 70°C |
| Storage temperature                        | Recommended              | -20°C do 45°C |

Label: 50x30mm



|                           |                            |   |  |                            |                      |
|---------------------------|----------------------------|---|--|----------------------------|----------------------|
| Material/ Materiał:       | Scale/ Skala: :            | Format/ Format arkusza: A4              | Weight/ Masa:                          | Sheet/ Arkusz: /           | Version/ Wersja: _   |
| Finishing/ Wykończenie: _ | Date/ Data:                |   |  |                            | Revision/ Rewizja: _ |
| Designed by/ Konstruował: |                            |   |  |                            | ERP system number:   |
| Checked by/ Sprawdził:    |                            |   |  |                            | 278261               |
| Approved by/ Zatwierdził: |                            |   |  |                            |                      |
| Update/ Aktualizował:     | Update/ Data aktualizacji: | Date of implementation/ Data wykonania: | Product reference/ Nazwa:              | Docum. number/ Nr rysunku: |                      |
| J. Dadacz                 |                            | 2016-10-18                              | BD-SC1500H 4.80V 1,50Ah cyli ACCU-SC/4 |                            |                      |