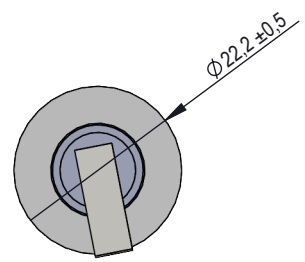
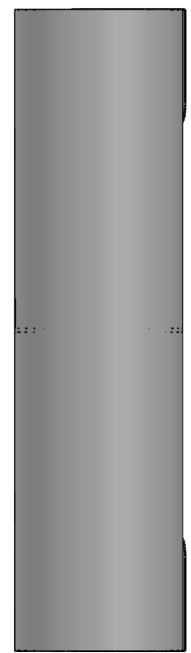
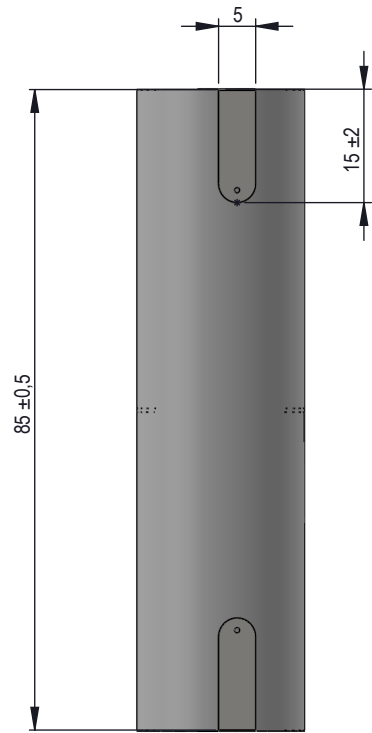
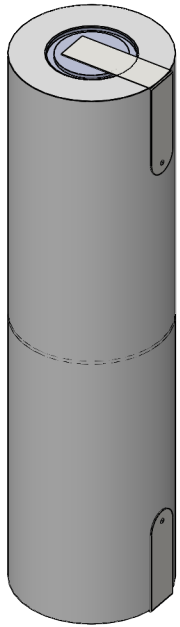
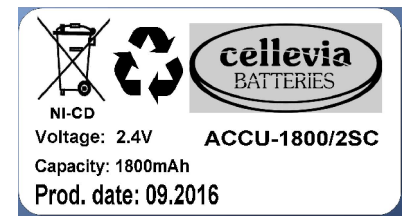


Specifications

Nominal Voltage [V]		2.4
Typical capacity [mAh]		1800
Size [mm]		According to the drawing
Typical charge [mA]		170 (16 hrs)
Rapid charge [mA]		1700 (temp. 20°C)
Standard continuous discharge current [mA]		130 (temp. 20°C)
Charge temperature	Typical	0°C do 50°C
Discharge temperature	Continous	-20°C do 60°C
Storage temperature	Recommended	+5°C do 25°C



LABEL:



Material/ Materiał:	Scale/ Skala: 1:1	Format/ Format arkusza: A4	Weight/ Masa:	Sheet/ Arkusz: /	Version/ Wersja: _
Finishing/ Wykończenie: _	Date/ Data:				Revision/ Rewizja: _
Designed by/ Konstruował:					ERP system number: 10346
Checked by/ Sprawdził:					
Approved by/ Zatwierdził:					
Update/ Aktualizował:	Update/ Data aktualizacji:	Date of implementation/ Data wykonania:	Product reference/ Nazwa:	Docum. number/ Nr rysunku:	
J. Dadacz		2016-09-22	ACCU-1800/2SC 2S1P VRECs1800 2,40V 1,80Ah cylil		

S/DZIAŁ_BADAN_I_ROZWOJU/PUBLIKNYPROJEKTY_NIEMODZKROWANE_PREZDITTIME(03M6)3S1P_VRECS1800_2.40V_1.80Ah_cylil