

# Power Relay RM 8

2 pole 25 A, DC- or AC-coil



## Features

- 2 C/O contacts
- DC- or AC-coil
- Mechanical indicator
- Push-to-test-button
- Chassis- or DIN-rail mount

## Applications

Cleaning equipment, heating and cooling equipment

F0165-A



Technical data of approved types on request

### Contact data

Configuration	2 C/O contact
Type of contact	single contact
Rated current	25 A
Rated voltage / max.breaking voltage AC	250 Vac / 440 Vac
Maximum breaking capacity AC	6000 VA
Make current (max. 4 s at duty cycle 10%)	60 A
Contact material	AgCdO

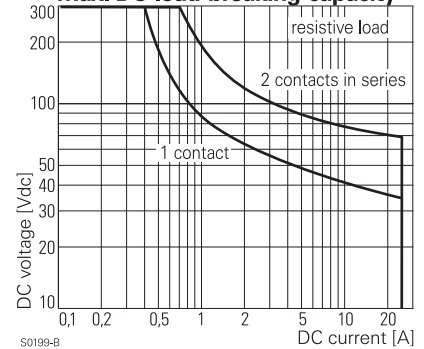
### Contact ratings

Type	Load	Standard
RM8	2hp, 240 Vac, per contact	UL 508
RM8	1.5hp, 120 Vac, per contact	UL 508
RM8	25 A, 240 Vac, per contact	UL 508

### Coil data

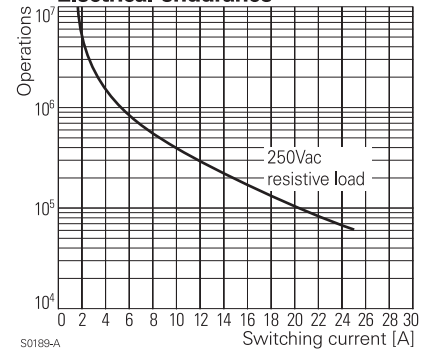
Nominal voltage	DC coil	6...220 Vdc
	AC coil	6...400 Vac
Nominal coil power	DC coil	1.2 W
	AC coil	2.8 VA

### Max. DC load breaking capacity



S0199-B

### Electrical endurance



S0189-A

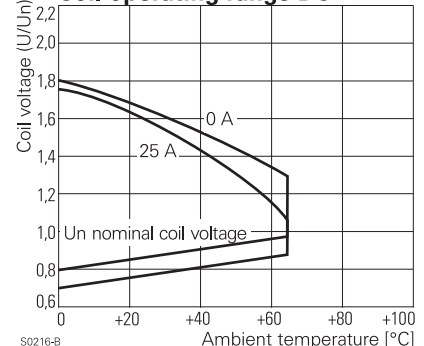
### Coil versions, DC-coil, RM8

Coil code	LED	PD*	LED	Nominal voltage	Pull-in voltage	Release voltage	Coil resistance	Coil current
STD	bipolar	PD*	PD*	Vdc	Vdc	Vdc	Ω	mA
006	L06	0A6	LA6	6	4.5	0.6	32±10%	187.5
012	L12	0B2	LB2	12	9.0	1.2	110±10%	109.1
<b>024</b>	<b>L24</b>	<b>0C4</b>	<b>LC4</b>	<b>24</b>	<b>18.0</b>	<b>2.4</b>	<b>475±10%</b>	<b>50.5</b>
048	L48	0E8	LE8	48	36.0	4.8	2000±10%	24.0
060	L60	0G0	LG0	60	45.0	6.0	2850±10%	21.1
110	M10	1B0	MB0	110	82.5	11.0	10000±12%	11.0
221	N21	2C1	NC1	220	165.0	22.0	40000±15%	5.5

All figures are given for coil without preenergization, at ambient temperature +20°C

\* Protection diode PD; standard polarity: +A1 / -A2

### Coil operating range DC



S0216-B

# Power Relay RM 8

2 pole 25 A, DC- or AC-coil

## Coil versions, AC-coil, RM8

Coil code	LED	Nominal voltage Vac	Pull-in voltage Vac	Release voltage Vac	Coil resistance $\Omega$	Coil current mA
506	R06	6	4.8	2.4	$4.7 \pm 10\%$	476.7
512	R12	12	9.6	4.8	$19.5 \pm 10\%$	225.8
<b>524</b>	<b>R24</b>	<b>24</b>	<b>19.2</b>	<b>9.6</b>	<b><math>80 \pm 10\%</math></b>	<b>109.2</b>
548	R48	48	38.4	19.2	$320 \pm 10\%$	54.2
560	R60	60	48.0	24.0	$500 \pm 10\%$	43.7
615	S15	115	92.0	46.0	$1850 \pm 10\%$	23.0
<b>730</b>	<b>T30</b>	<b>230</b>	<b>184.0</b>	<b>92.0</b>	<b><math>7500 \pm 10\%</math></b>	<b>11.7</b>
900	V00	400	320.0	160.0	$23500 \pm 15\%$	6.5

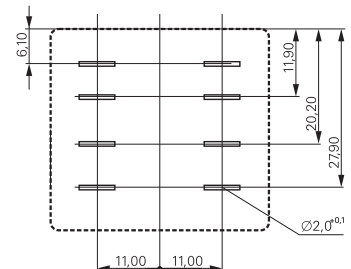
All figures are given for coil without preenergization, at ambient temperature +20°C

## Insulation

Dielectric strength	coil-contacts	2500 $V_{rms}$
	open contact circuit	1500 $V_{rms}$
	adjacent contacts	4000 $V_{rms}$
Clearance / creepage		$\geq 2.8 / 4$ mm
Insulation to VDE 0110b (2/79)		
Insulation category / reference voltage		C / 250

## Terminal assignment

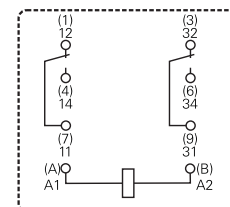
View on solder pins  
Dimensions in mm



S0269-AG

## Other data

Ambient temperature	DC-coil	-45...+65 °C
	AC-coil	-45...+40 °C
Mechanical life		$> 10 \times 10^6$ operations
Max. switching rate at rated- / minimum load		16 $\text{min}^{-1}$ / 100 $\text{min}^{-1}$
Operate- / release time		approx. 15 / 15 ms
Bounce time		approx. 3 ms
Vibration resistance N/O / N/C contact		$> 10 / 5$ g, 30...150 Hz
Category of protection (IEC 61810)		RT I - dust protected
Relay weight		81 g
Packaging unit		10 / 25 pcs.



S0269-AD

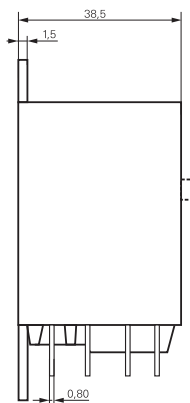
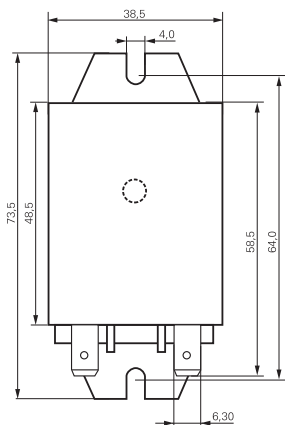
# Power Relay RM 8

2 pole 25 A, DC- or AC-coil

## Dimensions

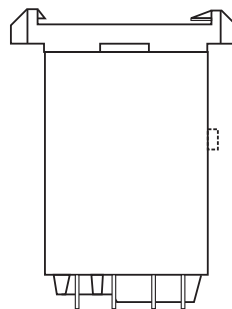
Dimensions in mm

Cover with mounting brackets, FASTON 250



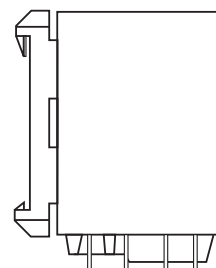
S0298-AC

Cover with DIN-snap-on attachment  
horizontal



S0298-AD

vertical



S0298-AE

## Product key



Type

Contacts

**8** 2 C/O contacts, 25 A

Version

**0** without test button      **3** with test button

Mounting

**5** cover with mounting brackets, AMP-Faston 250  
**8** cover with DIN-snap-on attachment, horizontal, AMP-Faston 250  
**9** cover with DIN-snap-on attachment, vertical, AMP-Faston 250

Coil

Coil code: please refer to coil versions table, preferred types in bold print

AMP-Faston 250 = 6.3 x 0.8 mm

Product key	Contacts	Version	Enclosure	Coil	Coil	Part number
RM805024	2 C/O contacts 25 A	without test button	mounting brackets AMP 250	DC-coil	24 Vdc	2-1393844-7
RM805524				AC-coil	24 Vac	2-1393147-9
RM805615					115 Vac	3-1393147-1
RM805730				230 Vac	3-1393147-3	
RM808024			DIN-snap-on horizontal	DC-coil	24 Vdc	2-1393844-9
RM808524				AC-coil	24 Vac	3-1393147-7
RM808730				230 Vac	5-1393149-7	
RM809024			DIN-snap-on vertical	DC-coil	24 Vdc	5-1393149-8
RM809615				AC-coil	115 Vac	3-1393147-8
RM809730				230 Vac	3-1393147-9	
RM835024		with test button	mounting brackets AMP 250	DC-coil	24 Vdc	4-1393147-1
RM835524				AC-coil	24 Vac	4-1393147-3
RM835615					115 Vac	4-1393147-4
RM835730				230 Vac	4-1393147-6	
RM838024			DIN-snap-on horizontal	DC-coil	24 Vdc	4-1393147-8
RM838524				AC-coil	24 Vac	5-1393147-0
RM838730				230 Vac	5-1393147-1	
RM839024			DIN-snap-on vertical	DC-coil	24 Vdc	5-1393147-4
RM839524				AC-coil	24 Vac	5-1393147-5
RM839730				230 Vac	5-1393147-6	