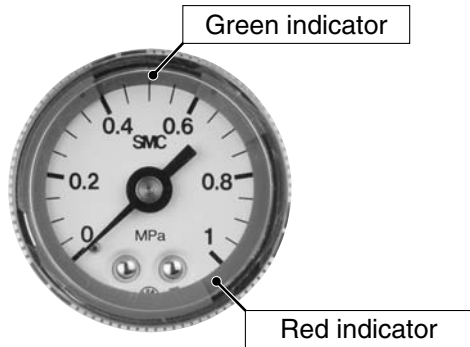
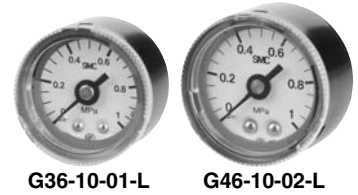


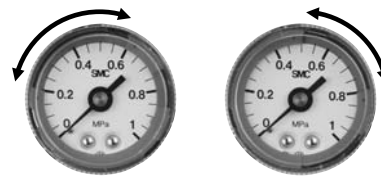
# Pressure Gauge with Limit Indicator/ Color Zone Type

## Series G36-L/G46-L

■ Red and green zones offer improved visibility of pressure control range.



Indicator adjusts to highlight preferred range.



### Standard Specifications

Model		G36-L	G46-L
<b>Type</b>		Back side thread	
<b>Port size <sup>(1)</sup></b>		R 1/8	R 1/8, R 1/4
<b>Fluid <sup>(2)</sup></b>		Air	
<b>Indication precision</b>		±3% F.S. (Full span) <sup>(3)</sup>	
<b>Material</b>	<b>Case (Surface treatment)</b>	Rolled steel (Black melamine painted)	
	<b>Clear cover</b>	Polycarbonate (Part no.: G36-00-00-3) Nylon (Part no.: G36-00-00-3N)	Polycarbonate (Part no.: G46-00-00-3) Nylon (Part no.: G46-00-00-3N)
	<b>Stud</b>	Brass	
	<b>Bourdon tube</b>	Brass	
<b>Mass (kg)</b>		0.04	0.05

Note 1) When mounting a pressure gauge, use caution not to tighten excessively. Excessive tightening will cause product to be damaged. Use a pipe tape for sealing.  
Recommended tightening torque: R 1/8: Set between 7 and 9 N·m, R 1/4: 12 and 14 N·m respectively.

Note 2) When using other fluids, please consult with SMC for fluid compatibility information concerning corrosive potential.

Note 3) Temperature conditions: at 20°C (±5°C), in other cases, ±6°C F.S.

### Model (Standard)

Model	Pressure range <sup>(1)</sup>		Green zone setting range		Indication unit	Connection thread	Note
	MPa		Minimum setting range (MPa)	Maximum setting range (MPa)			
G36-2-01-L□	0 to 0.2		0.01	0.1	MPa	R 1/8	—
G36-4-01-L□	0 to 0.4		0.02	0.2			
G36-10-01-L□	0 to 1.0		0.05	0.5			
G46-2-01 to 02-L□	0 to 0.2		0.01	0.1		R 1/8, 1/4	
G46-4-01 to 02-L□	0 to 0.4		0.02	0.2			
G46-10-01 to 02-L□	0 to 1.0		0.05	0.5			

Note 1) Do not apply pressure more than the maximum display pressure. This will cause a malfunction.

### Model (Made to Order)

Model	Pressure range <sup>(1)</sup>		Green zone setting range		Indication unit	Connection thread	Note
	MPa	psi	Minimum setting range (MPa (psi))	Maximum setting range (MPa (psi))			
G36-P2-01-L□-X30	0 to 0.2	0 to 30	0.01 (2)	0.1 (14)	MPa, psi	R 1/8	—
G36-P4-01-L□-X30	0 to 0.4	0 to 60	0.02 (4)	0.2 (28)			
G36-P10-01-L□-X30	0 to 1.0	0 to 150	0.05 (10)	0.5 (70)			
G46-P2-01 to 02-L□-X30	0 to 0.2	0 to 30	0.01 (2)	0.1 (14)		R 1/8, 1/4	
G46-P4-01 to 02-L□-X30	0 to 0.4	0 to 60	0.02 (4)	0.2 (28)			
G46-P10-01 to 02-L□-X30	0 to 1.0	0 to 150	0.05 (10)	0.5 (70)			

Note 1) Do not apply pressure more than the maximum display pressure. This will cause a malfunction.

How to Order

**G36-10-01-L** - -

Size

Symbol	Outside diameter
36	ø37.5
46	ø42.5

Max. display pressure

Symbol	Unit
2	0.2 MPa
4	0.4 MPa
10	1.0 MPa
P2 (Note)	0.2 MPa, 30 psi
P4 (Note)	0.4 MPa, 60 psi
P10 (Note)	1.0 MPa, 150 psi

(Note) This symbol must be used with Option "X30."

Made to Order

Symbol	Specifications
Nil	—
X30	Both MPa and psi

Clear cover material

Symbol	Material
Nil	Polycarbonate
N	Nylon

Color zone type

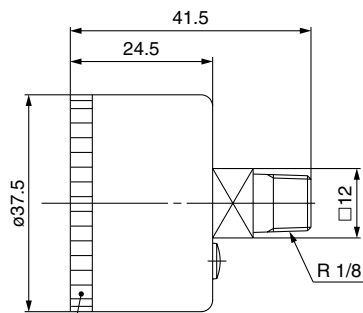
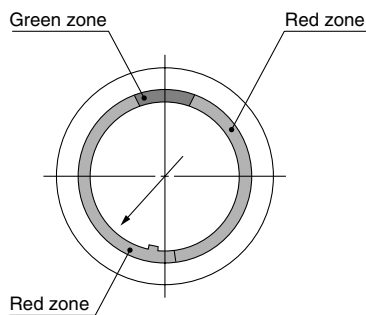
Thread port size

Symbol	Port	Applicable size	
		G36	G46
01	R 1/8	●	●
02	R 1/4	—	●

G  
GS  
PPA

Dimensions

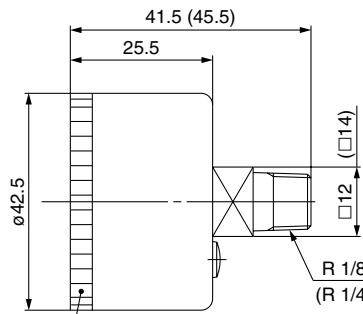
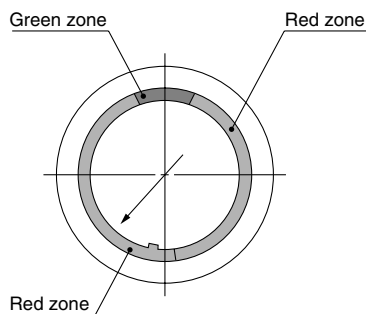
G36



Clear cover

- Polycarbonate part no.: G36-00-00-3
- Nylon part no.: G36-00-00-3N

G46



Clear cover

- Polycarbonate part no.: G46-00-00-3
- Nylon part no.: G46-00-00-3N

( ): R 1/4