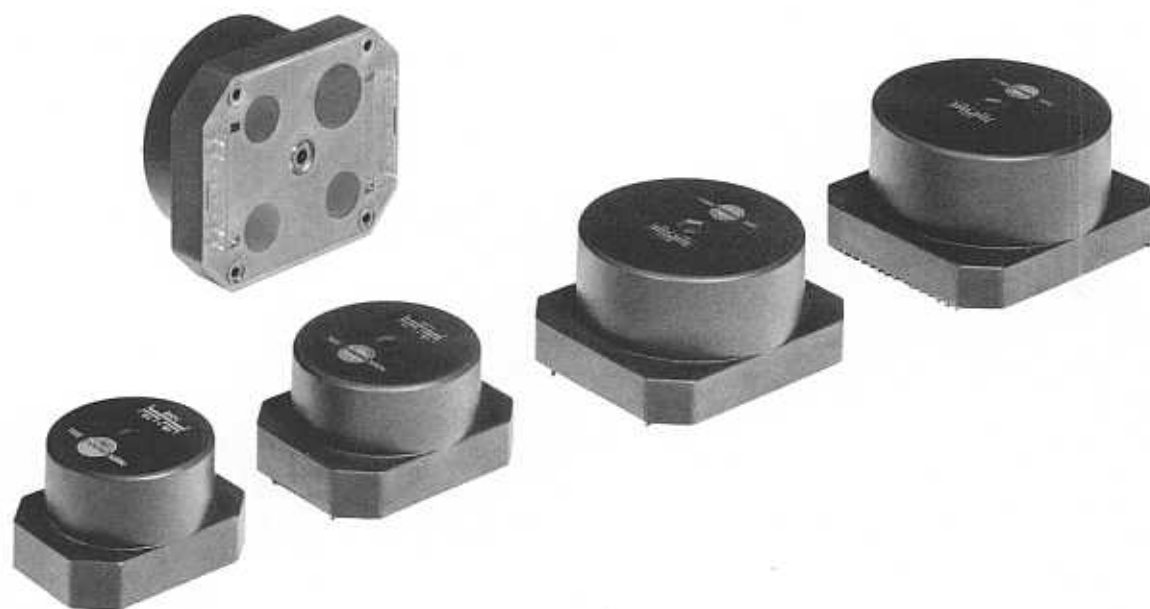


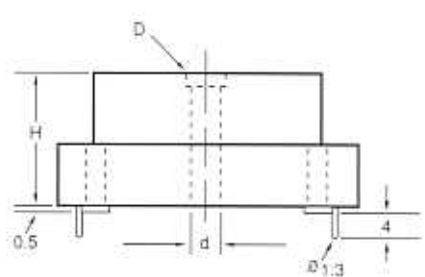
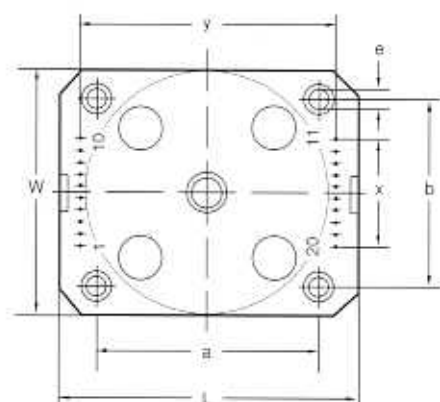
Standard Toroidal Transformer, PC Mount, 35 VA–160 VA, 230 V or 240V Primary, 50/60 Hz

Advantages: Lower strayfield, higher efficiency, reduced "standby" current and lower weight.



| Power VA | Dimensions | | | | | | | | | | Weight Kg |
|----------|------------|---------|---------|---------|---------|---------|---------|---------|---------|---------------|-----------|
| | L ± 0.3 | W ± 0.2 | H ± 0.2 | x ± 0.2 | y ± 0.2 | a ± 0.2 | b ± 0.2 | d ± 0.2 | e ± 0.2 | D (Hex) ± 0.2 | |
| 35 | 80.0 | 63.1 | 43.3 | 5 x 5 | 70 | 50 | 50 | 5.1 | 3.4 | 7 | 0.72 |
| 50 | 90.2 | 73.2 | 43.4 | 7 x 5 | 80 | 60 | 60 | 5.1 | 3.4 | 7 | 0.72 |
| 90 | 100.0 | 83.5 | 43.4 | 9 x 5 | 90 | 70 | 70 | 5.1 | 3.4 | 7 | 1.00 |
| 110 | 112.2 | 93.3 | 50.5 | 11 x 5 | 100 | 80 | 80 | 6.1 | 3.4 | 10 | 1.35 |
| 160 | 120.3 | 103.3 | 55.5 | 13 x 5 | 110 | 90 | 90 | 6.1 | 3.4 | 10 | 1.80 |

| Power VA | Part Number | | Sec. Full Load V | Eff. % | Reg. ΔV @20° C | Schematic | |
|----------|-------------|--------|------------------|--------|----------------|-----------|-----------|
| | 115V | 230V | | | | Primary | Secondary |
| 35 | 6400K | 6500K | 2 x 7 | 83 | 18.6 | | |
| | 6401K | 6501K | 2 x 9 | | | | |
| | 6402K | 6502K | 2 x 12 | | | | |
| | 6403K | 6503K | 2 x 15 | | | | |
| | 6404K | 6504K | 2 x 18 | | | | |
| | 6405K | 6505K | 2 x 24 | | | | |
| 6406K | 6506K | 2 x 30 | | | | | |
| 50 | 6410K | 6510K | 2 x 7 | 85 | 15.2 | | |
| | 6411K | 6511K | 2 x 9 | | | | |
| | 6412K | 6512K | 2 x 12 | | | | |
| | 6413K | 6513K | 2 x 15 | | | | |
| | 6414K | 6514K | 2 x 18 | | | | |
| | 6415K | 6515K | 2 x 24 | | | | |
| 6416K | 6516K | 2 x 30 | | | | | |
| 90 | 6420K | 6520K | 2 x 7 | 89 | 11.5 | | |
| | 6421K | 6521K | 2 x 9 | | | | |
| | 6422K | 6522K | 2 x 12 | | | | |
| | 6423K | 6523K | 2 x 15 | | | | |
| | 6424K | 6524K | 2 x 18 | | | | |
| | 6425K | 6525K | 2 x 24 | | | | |
| 6426K | 6526K | 2 x 30 | | | | | |
| 110 | 6430K | 6530K | 2 x 7 | 87 | 10.1 | | |
| | 6431K | 6531K | 2 x 9 | | | | |
| | 6432K | 6532K | 2 x 12 | | | | |
| | 6433K | 6533K | 2 x 15 | | | | |
| | 6434K | 6534K | 2 x 18 | | | | |
| | 6435K | 6535K | 2 x 24 | | | | |
| 6436K | 6536K | 2 x 30 | | | | | |
| 160 | 6440K | 6540K | 2 x 7 | 90 | 9.5 | | |
| | 6441K | 6541K | 2 x 9 | | | | |
| | 6442K | 6542K | 2 x 12 | | | | |
| | 6443K | 6543K | 2 x 15 | | | | |
| | 6444K | 6544K | 2 x 18 | | | | |
| | 6445K | 6545K | 2 x 24 | | | | |
| 6446K | 6546K | 2 x 30 | | | | | |



Options

- Dual primaries and multiple secondaries with different voltage ratings
- Magnetic and/or electrostatic copper shielding
- Fuses
- Temperature switches

Note: 160VA only – Secondary pin connection for 2 x 7V will be 15+16 - 18+19 and 24+25 - 27+28