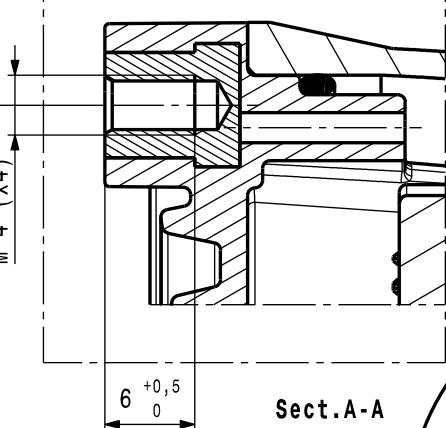
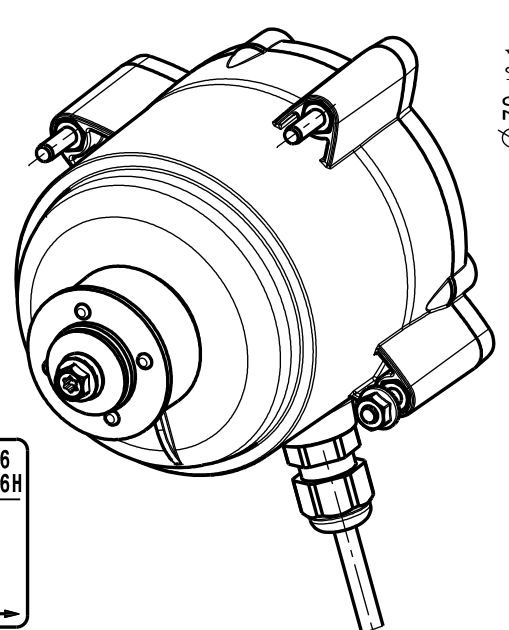
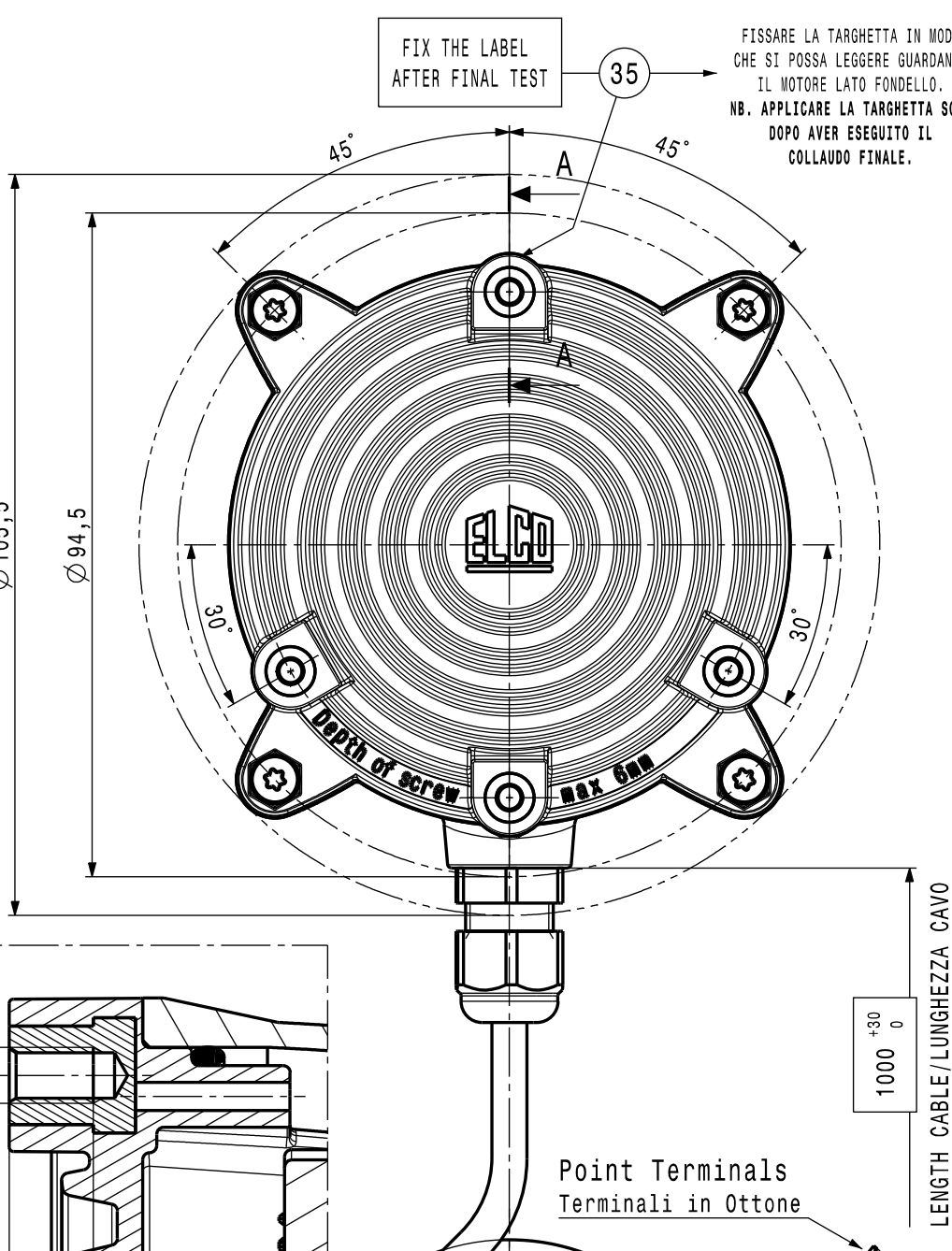
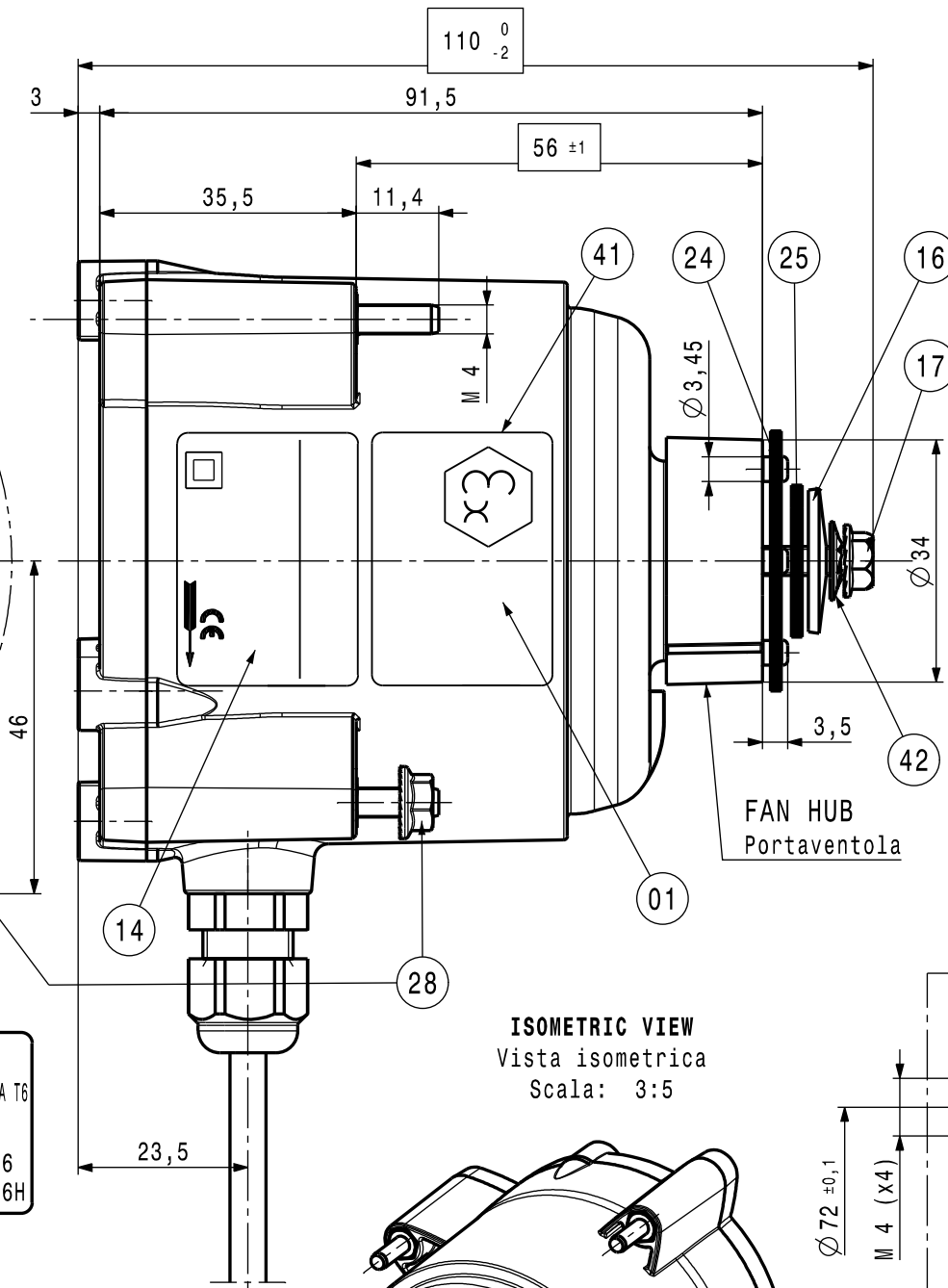
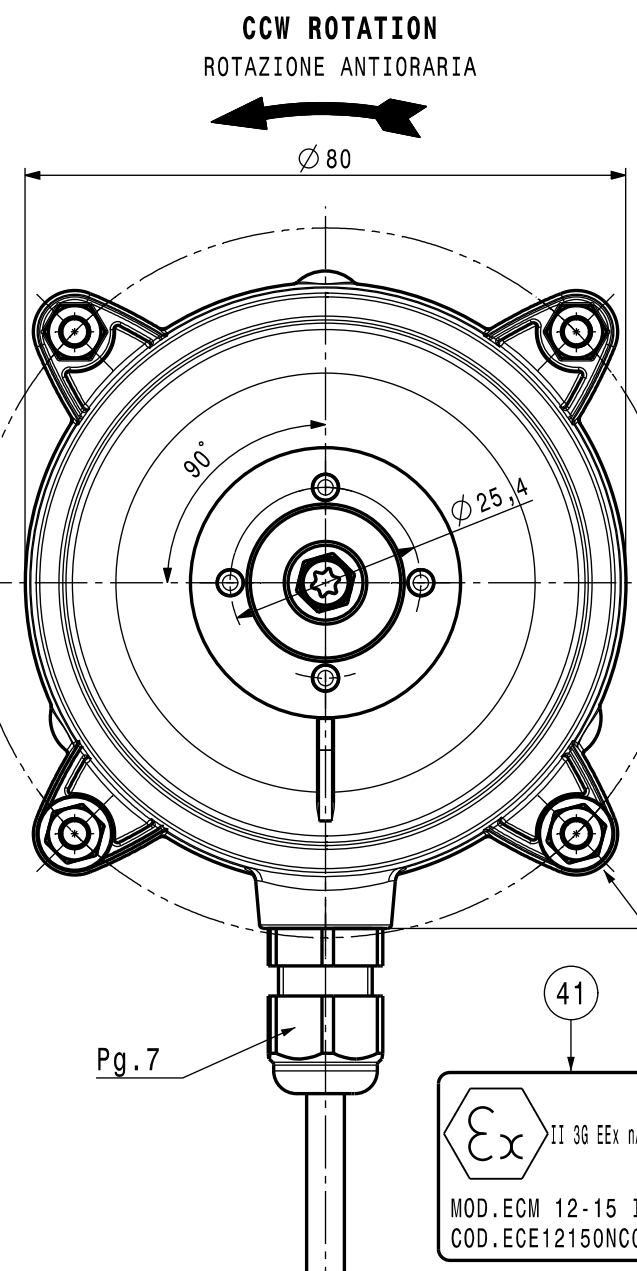


DRAWING MADE BY
CAD
HAND MADE MODIFICATIONS ARE FORBIDDEN



**MOTORE PER BLISTER
VERSIONE EUROPA**

Ex II 3G EEx nA IIA T6
MOD. ECM 12-15 IP66
COD. ECE12150NC0186H

CLASS "B" MOTOR - BALL BEARINGS MANUFACTURED (Motore in classe B - Esecuzione A CUSCINETTI)	
ELECTRONIC BOARD / SCHEDA ELETTRONICA	1H-1500Rpm
PLASTIC BODY / CORPO IN PLASTICA	-
PLASTIC BACK COVER / FONDELLO IN PLASTICA	-
PLASTIC FAN HUB / PORTAVENTOLA IN PLASTICA	-
ASSEMBLING SPECIFICATION /NORMATIVA DI ASSEMBLAGGIO	EL.UN.0098
DATA SHEET	RdS 10/0009
ELECTRICAL SPECIFICATION /PRESCRIZIONE CONTROLLO ELETTRICO	M.2276/1

MOD. ECM 12-15 IP66
COD. ECE12150NC0186H
230V 50/60Hz
14Win 0.09A 1400RPM
IP66 Cl.B TOP
DATE



A 04/03/10 Updated data label ('TOP' was 'TH.PROT.')		R.d.M.09/0008 A.T.		M.Cazzaniga	T.Sirtori
Rel	Date	Description	Executor signature	Checked	
MODIFICATIONS					
1	2	3	4		

For dim. without tolerance see standard UNI EN 22768-mK	Treatment	A3	
	Material		
ELCO	Drawn V.Trope	Motor ECM 12 230V IP66 N	
	Date 22/01/10	230V 50/60Hz - Rpm1500	
	Check T.Sirtori	PROTECTION DEGREE IP66	
	Scale 1:1	ECE12150NC0186H	

FISSARE LA TARGHETTA IN MODO CHE SI POSSA LEGGERE GUARDANDO IL MOTORE LATO FONDELLO.
NB. APPLICARE LA TARGHETTA SOLO DOPO AVER ESEGUITO IL COLLAUDO FINALE.

FIX THE LABEL AFTER FINAL TEST

Point Terminals
Terminali in Ottone
LENGTH CABLE/LUNGHEZZA CAVO