

REV.	DESCRIPTION	DRAWN	CHECKED	APPROVED
A	NEW RELEASE	LJH 05/08/05'		LJC 05/08/05'
B	ADD P/N CODE	JLZ 10/28/14'		LJC 10/28/14'
C	HOUSING CHANGE	JLZ 07/06/15'		

NOTES:

- MATERIAL&FINISHES
 - INSULATOR:THERMOPLASTIC(UL 94V-0).
 - CONTACT MATERIAL: COPPER ALLOY.
- SPECIFICATION
 - CURRENT RATING:1.5 Amp.
 - INSULATION RESISTANCE:1000MΩ Min.
 - DIELECTRIC WITHSTANDING:600VAC.
 - CONTACT RESISTANCE:20mΩ Max.
 - OPERATING TEMPERATURE:-40°C TO +105°C.
- PART NUMBER: DS1025-07
- PRODUCT NUMBER CODE:

DS1025-07 - X X X X X X - X

⑧
PLATING LEVEL(FOR GOLD ONLY)
3A:LEVEL 3A B:LEVEL B

DIM A TYPE
1: TYPE 1
2: TYPE 2

CONTACTS TYPE
S:SMT TYPE

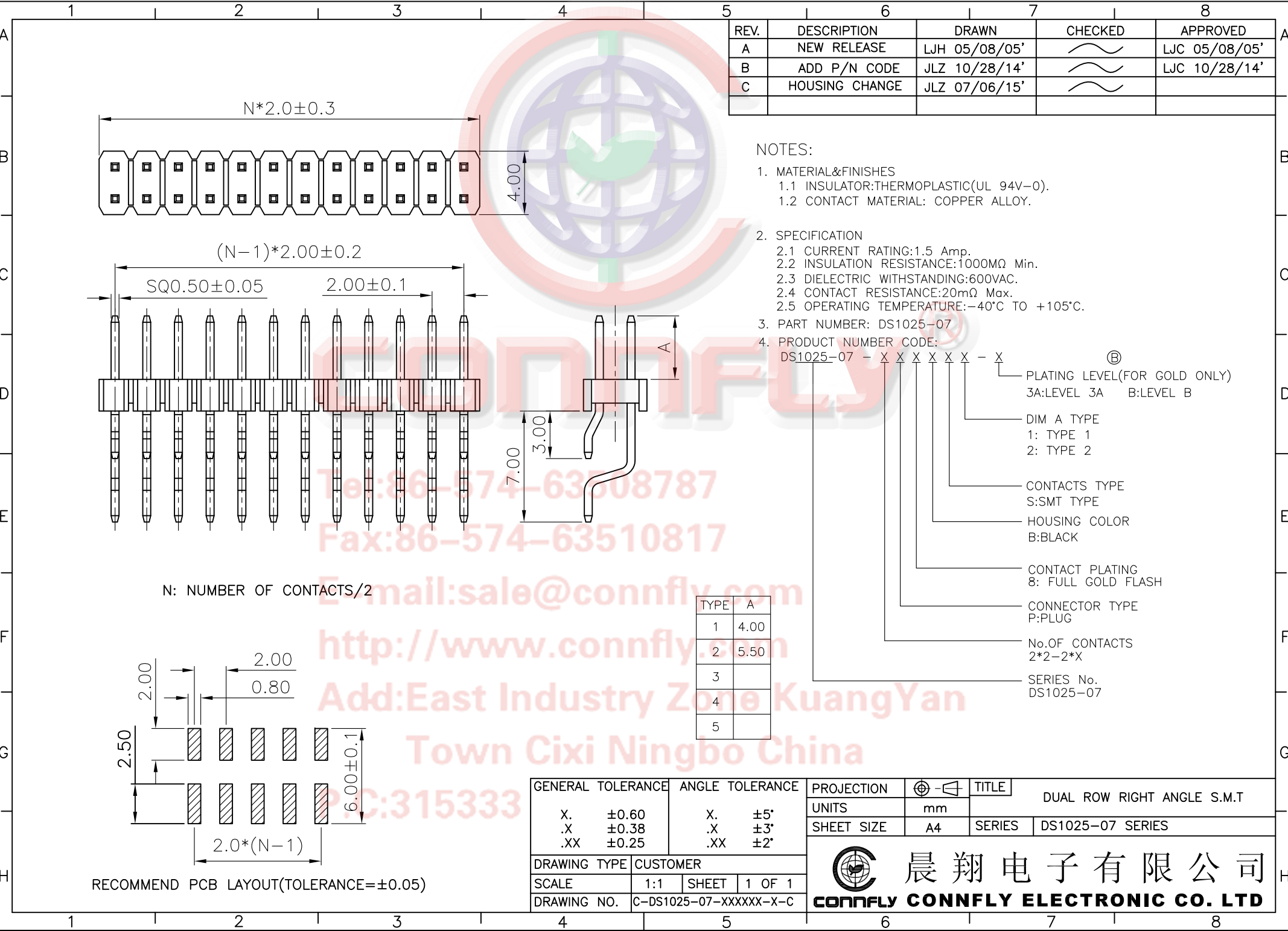
HOUSING COLOR
B:BLACK

CONTACT PLATING
8: FULL GOLD FLASH

CONNECTOR TYPE
P:PLUG

No.OF CONTACTS
2*2-2*X

SERIES No.
DS1025-07



N: NUMBER OF CONTACTS/2

TYPE	A
1	4.00
2	5.50
3	
4	
5	

RECOMMEND PCB LAYOUT(TOLERANCE=±0.05)

GENERAL TOLERANCE		ANGLE TOLERANCE		PROJECTION		TITLE	DUAL ROW RIGHT ANGLE S.M.T					
X.	±0.60	X.	±5°	UNITS	mm							
.X	±0.38	.X	±3°	SHEET SIZE	A4	SERIES	DS1025-07 SERIES					
.XX	±0.25	.XX	±2°									
DRAWING TYPE		CUSTOMER		晨翔电子有限公司 CONNFLY CONNFLY ELECTRONIC CO. LTD								
SCALE		1:1							SHEET		1 OF 1	
DRAWING NO.		C-DS1025-07-XXXXXX-X-C										