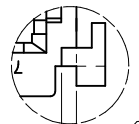
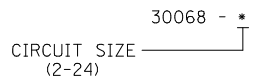


CKT. SIZE	ENG. NO.	EDP. NO.	DIM. "A" REF.	DIM. "B"
2	30068-2	15-97-6021	----	.467 (11.86)
4	30068-4	15-97-6041	.165 (4.20)	.467 (11.86)
6	30068-6	15-97-6061	.331 (8.40)	.633 (16.08)
8	30068-8	15-97-6081	.496 (12.60)	.798 (20.27)
10	30068-10	15-97-6101	.661 (16.80)	.963 (24.46)
14	30068-14	NOT TOOLED	.992 (25.20)	1.294 (32.87)
16	30068-16	15-97-6161	1.157 (29.40)	1.459 (37.06)

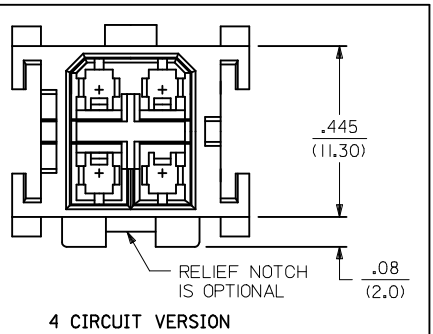
SEE SHT. 2 FOR 18 THRU 24 CKT'S.

LEGEND:

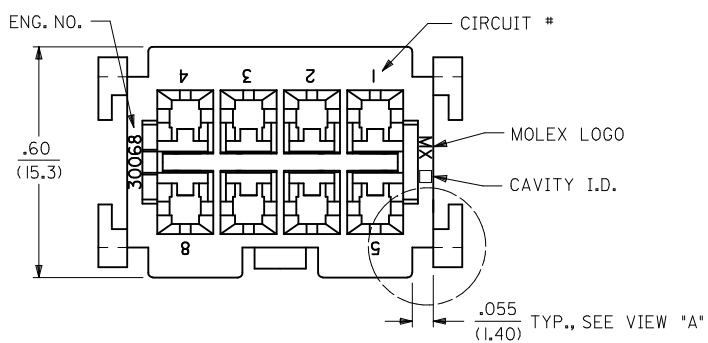


.04 (1.0) ON 6 & 16 CKT. PARTS ONLY.

VIEW "A"

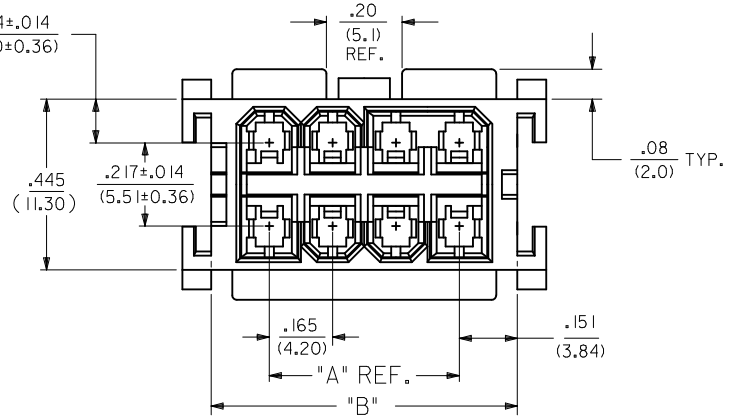
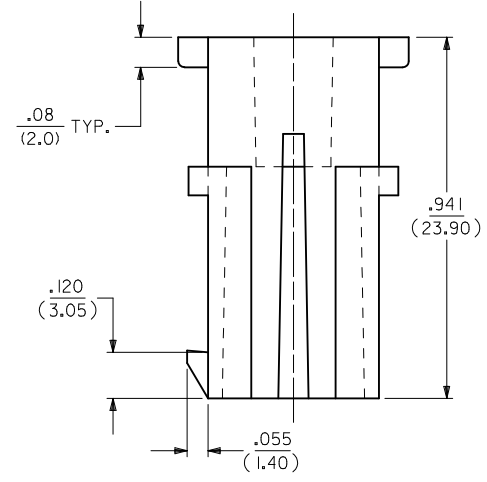
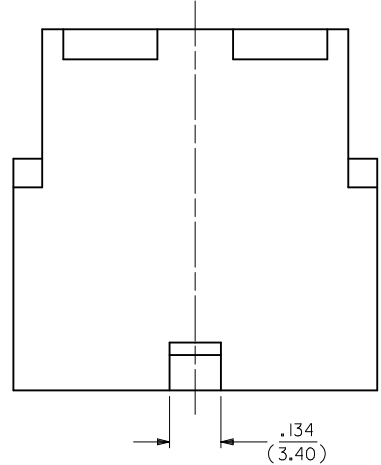
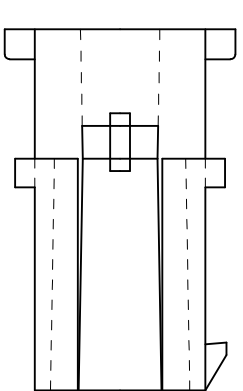


SEE SHT. #3 FOR PARTS WITH MOUNTING EARS



NOTES:

1. MATERIAL: UNFILLED POLYESTER, U.L. 94V-0, COLOR: BLACK
2. FINISH: N/A
3. PRODUCT SPECIFICATION: PS-5556-003
4. PACKAGING: BULK
5. HOUSING TO BE USED WITH TERMINAL #5558.
6. HOUSING MATES WITH RECEPTACLE #30067
7. 2 THRU 10 AND 14 THRU 24 CKT. HOUSING TO BE USED WITH T.P.A. NO. 30072-*
8. PART CONFORMS TO CLASS "B" REQUIREMENTS OF COSMETIC SPECIFICATION PS-45499-002.

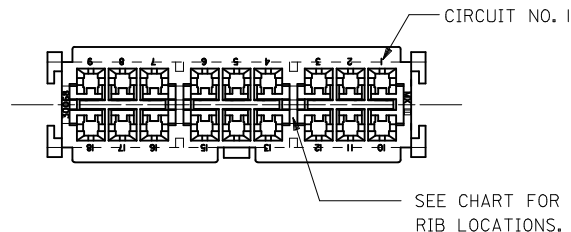


CORRECT NOTE 7 EC NO: UCP2012-0525 DRAWN: NGUYEN CHKD: BELL APPR: FSMITH R3	QUALITY SYMBOLS ▽=0 ▽=0 ▽=0	GENERAL TOLERANCES (UNLESS SPECIFIED)		DIMENSION STYLE IN/MM	SCALE 4:1	DESIGN UNITS METRIC	THIRD ANGLE PROJECTION
		mm	INCH	DRAWN BY DMF	DATE 1989/10/26	TITLE MINI FIT TPA PLUG HSG 2 THRU 24 CIRCUITS WITH OR W/O MTG EARS	
DESCRIPTION		APPROVED BY FSMITH		DATE 2011/08/25	MATERIAL NO. SD-30068-*		
REVISION		DRAFT WHERE APPLICABLE MUST REMAIN WITHIN DIMENSIONS		SIZE C	DOCUMENT NO.		SHEET NO. 1 OF 3

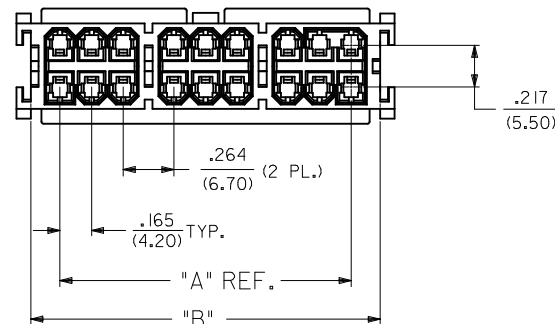
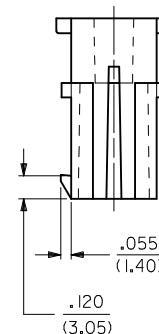
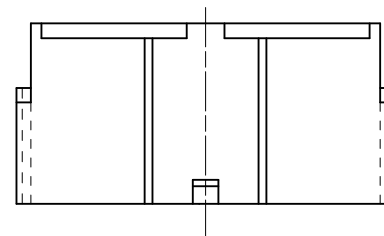
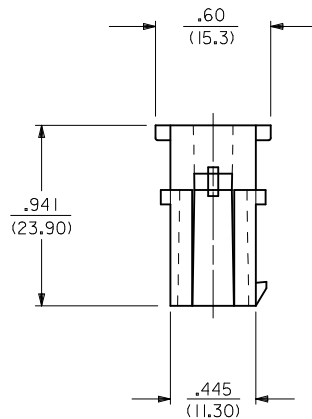
SEE CHART
THIS DRAWING CONTAINS INFORMATION THAT IS PROPRIETARY TO MOLEX INCORPORATED AND SHOULD NOT BE USED WITHOUT WRITTEN PERMISSION

CKT. NO.	ENG. NO.	PART NO.	DIM.* A'	DIM.* B'	RIBS LOCATED BETWEEN CKT'S.
18	30068-18	NOT TOOLED	$\frac{1.520}{(38.60)}$	$\frac{1.822}{(46.28)}$	3,4 & 6,7
20	30068-20	NOT TOOLED	$\frac{1.685}{(42.80)}$	$\frac{1.987}{(50.46)}$	3,4 & 7,8
22	30068-22	NOT TOOLED	$\frac{1.850}{(47.00)}$	$\frac{2.152}{(54.66)}$	4,5 & 7,8
24	30068-24	NOT TOOLED	$\frac{2.016}{(51.20)}$	$\frac{2.318}{(58.88)}$	4,5 & 8,9

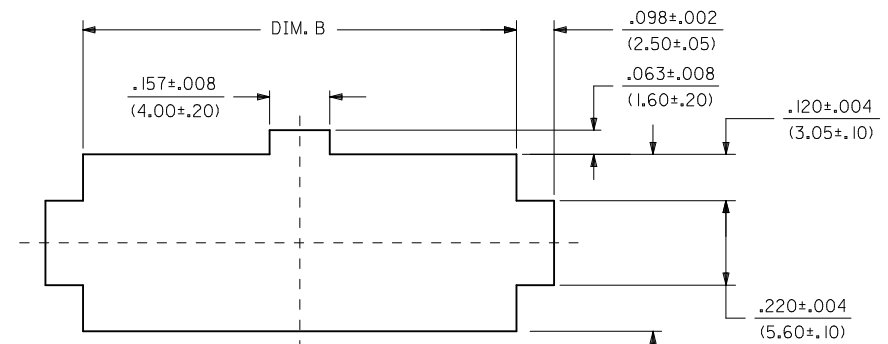
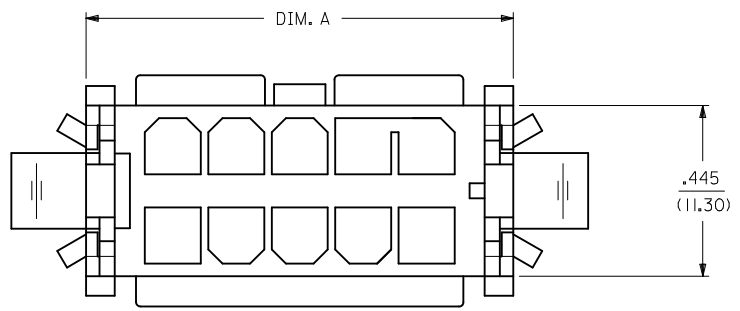
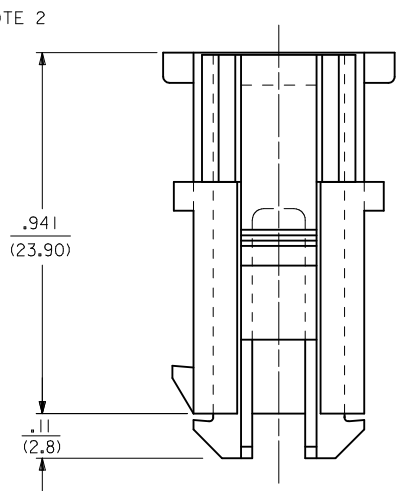
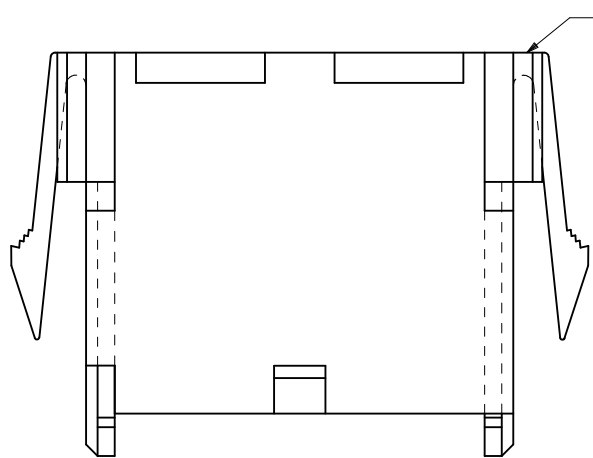
SEE SHT. 1 FOR 2 THRU 16 CKT'S.



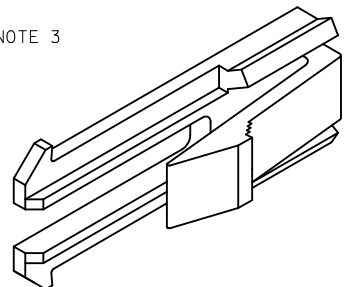
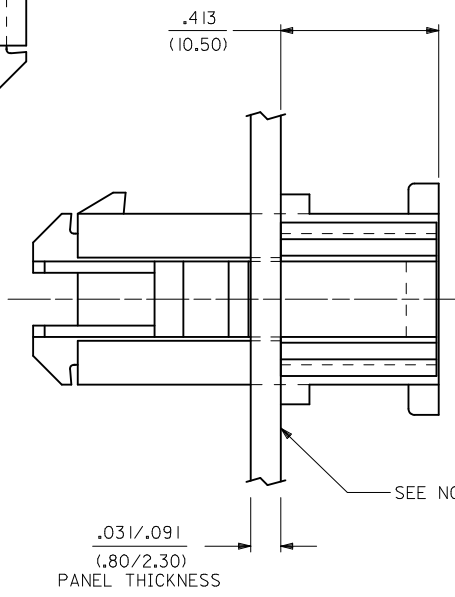
LEGEND:
30068 - *
CIRCUIT SIZE
(18-24)



SEE SHEET 1 EC NO: UCP2012-0525 DRAWN: NGUYEN 2011/08/22 CHKD: BELL 2011/08/22 APPR: FSMITH 2011/08/25	QUALITY SYMBOLS ▽=0 ▽=0 ▽=0	GENERAL TOLERANCES (UNLESS SPECIFIED)		DIMENSION STYLE IN/MM		SCALE 2:1	DESIGN UNITS METRIC	THIRD ANGLE PROJECTION			
		4 PLACES ± --- ± ---	3 PLACES ± --- ± .010	2 PLACES ± 0.25 ± .014	1 PLACE ± 0.36 ± ---	DRAWN BY DMF	DATE 1989/10/26	TITLE MINI FIT TPA PLUG HSG 2 THRU 24 CIRCUITS WITH OR W/O MTG EARS			
		ANGULAR ±1/2°		DRAFT WHERE APPLICABLE MUST REMAIN WITHIN DIMENSIONS		APPROVED BY FSMITH	DATE 2011/08/25	MATERIAL NO. SD-30068-*			
		SIZE C		SEE CHART		THIS DRAWING CONTAINS INFORMATION THAT IS PROPRIETARY TO MOLEX INCORPORATED AND SHOULD NOT BE USED WITHOUT WRITTEN PERMISSION				SHEET NO. 2 OF 3	



RECOMMENDED PANEL OPENING FOR USE WITH PLUGS WITH MOUNTING EARS.
RECOMMENDED PANEL THICKNESS .031/(0.8)-.08/(2.0).



NOTES:

- 1) MOUNTING EAR MATERIAL: UNFILLED POLYESTER, P.B.T., COLOR: BLACK.
- 2) MOUNTING EARS TO BE INSERTED INTO SIDE SLOTS FROM BACK OF HOUSING.
- 3) HOUSING ASSEMBLY TO BE INSERTED FROM PUNCH SIDE OF PANEL.
- 4) REFER TO DRAWING SD-43130-0001 MOUNTING EAR INFORMATION

NUMBER OF CIRCUITS	DIM. A	DIM. B
2	.617 (15.67)	.634 (16.10)
4	.617 (15.67)	.634 (16.10)
6	.783 (19.89)	.799 (20.30)
8	.948 (24.08)	.965 (24.50)
10	1.113 (28.27)	1.130 (28.70)
12	1.279 (32.49)	1.295 (32.90)
14	1.444 (36.68)	1.461 (37.10)
16	1.609 (40.87)	1.626 (41.30)
18	1.972 (50.09)	1.988 (50.50)
20	2.137 (54.28)	2.154 (54.70)
22	2.303 (58.50)	2.319 (58.90)
24	2.468 (62.69)	2.484 (63.10)

SEE SHEET 1 EC NO: UCP2012-0525 DRWNG: NGUYEN CHKD: BELLE APPR: FSMITH	2011/08/22 2011/08/22 2011/08/25	QUALITY SYMBOLS 	GENERAL TOLERANCES (UNLESS SPECIFIED)		DIMENSION STYLE IN/MM	SCALE 4:1	DESIGN UNITS METRIC	THIRD ANGLE PROJECTION		
			4 PLACES ± --- ± --- 3 PLACES ± --- ± .010 2 PLACES ± 0.25 ± .014 1 PLACE ± 0.36 ± ---	mm INCH	DRAWN BY DATE DMF 1989/10/26	TITLE MINI FIT TPA PLUG HSG 2 THRU 24 CIRCUITS WITH OR W/O MTG EARS				
			ANGULAR ±1/2°			CHECKED BY DATE TGP 1989/10/26	MOLEX INCORPORATED			
			DRAFT WHERE APPLICABLE MUST REMAIN WITHIN DIMENSIONS		APPROVED BY DATE FSMITH 2011/08/25				MATERIAL NO. SEE CHART	DOCUMENT NO. SD-30068-*