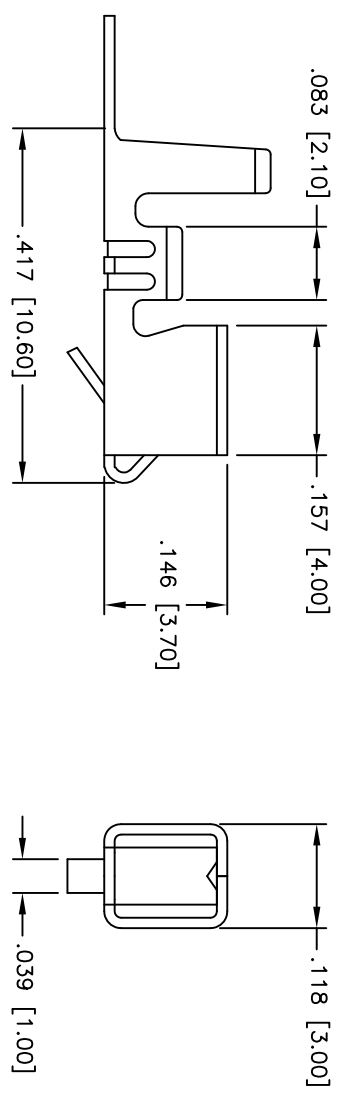
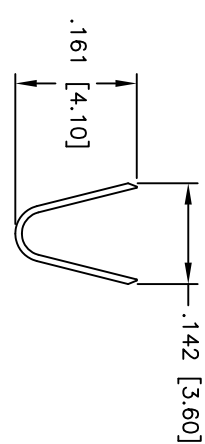
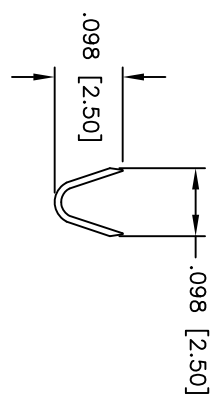
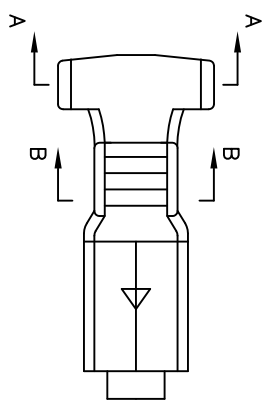


Rev	AWO #	Description	Date	Appr
-		RELEASED	4/12/05	

APPROVED: \_\_\_\_\_  
 DATE: \_\_\_\_\_ TITLE: \_\_\_\_\_



SPECIFICATIONS:  
 Material: Brass  
 Contact: Brass  
 Plating: Tin over Copper underplate overall  
 Electrical: Wire range: 18-24 AWG  
 Operating voltage: 250 VAC max  
 Current rating: 5 Amps max  
 Dielectric withstanding voltage: 1,000 Mohms min  
 Temperature Rating: Operating temperature: -25°C to +85°C  
 Environmental: Lead free, RoHS compliant

UNLESS OTHERWISE SPECIFIED ALL DIMENSIONS ARE INCHES [MM]	
TOLERANCES: EXCEPT AS NOTED	
INCHES	HOLES
.X ± .10	ØXX ± .10
.XX ± .020	ØXXX ± .015
.XXX ± .015	ØXXXX ± .010
APPROVALS	DATE
DRAWN SS	4/12/05
CHECKED	
APPROVED	

**ADAM TECH**  
 909 Rahway Avenue, Union, NJ 07083  
 Phone: 908-687-5000 Fax: 908-687-5710

TITLE: CRIMP CONTACT, ON REEL

SIZE: X PART NO.: MTC-C-R REV: -  
 REF: SCALE: NTS SHEET 1 OF 1