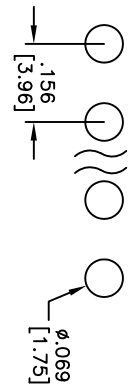
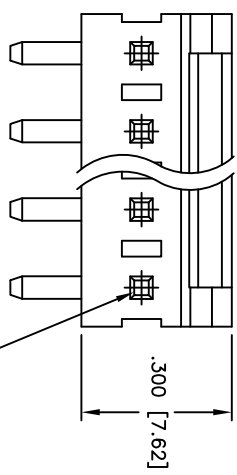
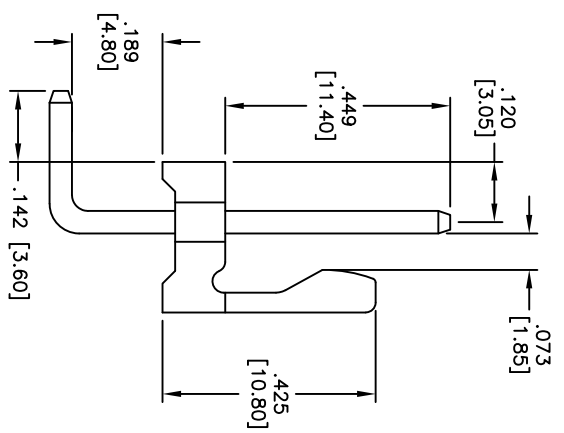
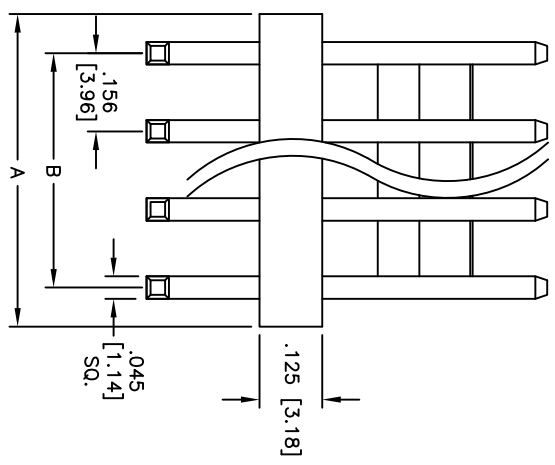


APPROVED: _____
 DATE: _____ TITLE: _____

Rev	AWO #	Description	Date	Appr
-		RELEASED	6/18/10	
A		ECN	12/8/10	



RECOMMENDED PCB LAYOUT



SPECIFICATIONS:
 Material: PA66, glass reinforced, rated UL 94V-0
 Insulator color: White
 Contact: Brass, Tin or Ni plated

Positions: 2 thru 20
 A = .156 [3.96] x No. of Positions
 B = .156 [3.96] x No. of Spaces

Electrical:
 Current rating: 7 Amps max
 Contact resistance: 20mohms max
 Insulation resistance: 1,000 Mohms min
 Dielectric withstanding voltage: 1,000 VAC for 1 minute

UNLESS OTHERWISE SPECIFIED
 ALL DIMENSIONS ARE INCHES [MM]
 TOLERANCES: EXCEPT AS NOTED
 INCHES HOLE SIZES

.X	± .10	ØX	± .10
.XX	± .020	ØXXX	± .015
.XXX	± .015	ØXXX	± .010

Operating temperature: -40°C to +85°C
 Environmental:
 Lead free, RoHS compliant
 Recommended soldering temp: 235°C for 5 seconds

ADAM TECH
 909 Railway Avenue, Union, NJ 07083
 Phone: 908-687-5000 Fax: 908-687-5710

Environmental:
 Operating temperature: -40°C to +85°C
 Environmental:
 Lead free, RoHS compliant
 Recommended soldering temp: 235°C for 5 seconds

DRAWN		DY	6/18/10	SIZE	PART NO.	LHD-XX-TRA-V0	REV.
CHECKED				X			A
APPROVED				REF: S0009C	SCALE: NTS	SHEET 1 OF 1	

