

## Specifications

Current rating: 3A AC,DC

Voltage rating: 250V AC,DC

Temperature range: -25°C ~ +85°C

Contact resistance: 10mΩ Max.

Insulation resistance: 1000MΩ Min.

Withstanding voltage: 1000V AC/minute

\*Contact H.R for details\*

## Standards



E179987

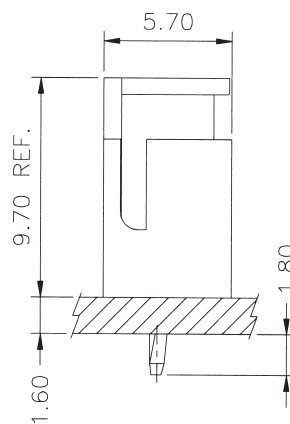
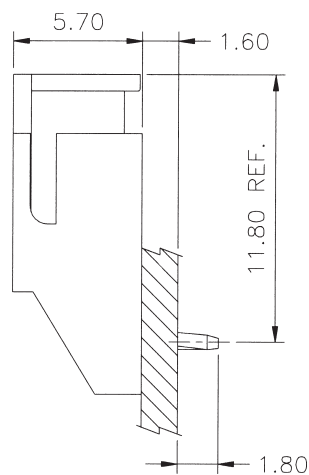


LR113464



R 3-50004394

## Assembly layout





# A2501 SERIES

2.50mm pitch wire to board connector

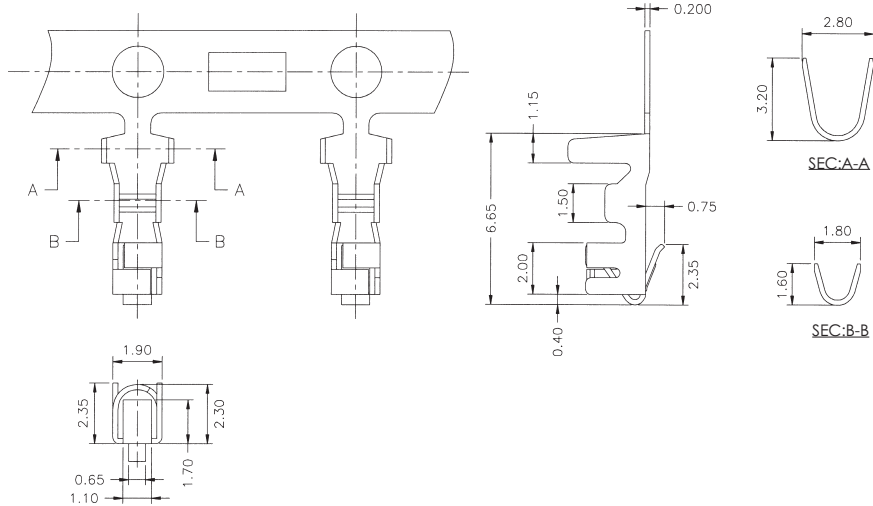


## A2501-T

2.50mm pitch Crimp Terminal

### Reference Informations:

\*Used in H.R A2501 series Housing



### Ordering Information & Specifications:

Unit:mm

| Part No.  | Wire Range | Insulation O.D. | Material        | Finish     | Qty/reel |
|-----------|------------|-----------------|-----------------|------------|----------|
| A2501-TBe | AWG#22-#28 | 1.90mm(max)     | Brass           | Tin-plated | 8,000pcs |
| A2501-TPe | AWG#22-#28 | 1.90mm(max)     | Phosphor Bronze | Tin-plated | 8,000pcs |

Note:e-Stamping before Tin-plated



## A2501H

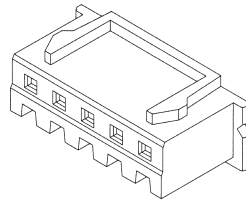
2.50mm pitch Housing

### Reference Informations:

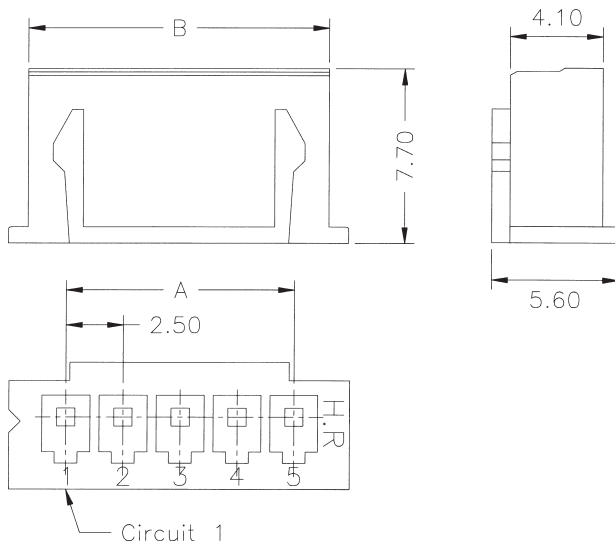
\*Material: Nylon 66,UL94V-0

\*Suitable H.R A2501 series Terminal

\*Mates with H.R A2501 series Wafer



### Ordering Information & Dimensions:



| PART NO.   | Dimensions |       |
|------------|------------|-------|
|            | A          | B     |
| A2501H-2P  | 2.50       | 5.70  |
| A2501H-3P  | 5.00       | 8.20  |
| A2501H-4P  | 7.50       | 10.70 |
| A2501H-5P  | 10.00      | 13.20 |
| A2501H-6P  | 12.50      | 15.70 |
| A2501H-7P  | 15.00      | 18.20 |
| A2501H-8P  | 17.50      | 20.70 |
| A2501H-9P  | 20.00      | 23.20 |
| A2501H-10P | 22.50      | 25.70 |
| A2501H-11P | 25.00      | 28.20 |
| A2501H-12P | 27.50      | 30.70 |
| A2501H-13P | 30.00      | 33.20 |
| A2501H-14P | 32.50      | 35.70 |
| A2501H-15P | 35.00      | 38.20 |
| A2501H-16P | 37.50      | 40.70 |
| A2501H-17P | 40.00      | 43.20 |
| A2501H-18P | 42.50      | 45.70 |
| A2501H-19P | 45.00      | 48.20 |
| A2501H-20P | 47.50      | 50.70 |

Unit:mm



# A2501 SERIES

2.50mm pitch wire to board connector

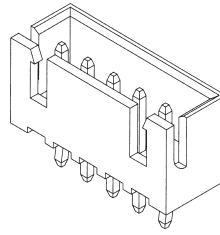


## A2501 WV

2.50mm pitch 180° Wafer

### Reference Informations:

- \*Material: Pin: Brass/Tin-plated  
Wafer: Nylon 66,UL94V-0
- \*Mates with H.R A2501 series Housing
- \*Nylon 46 is available



### Ordering Information & Dimensions:

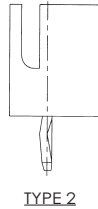
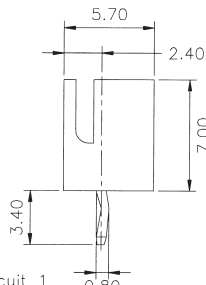
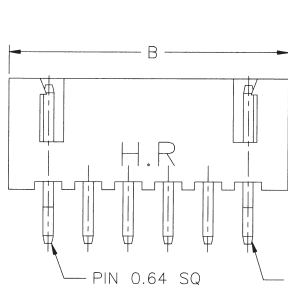
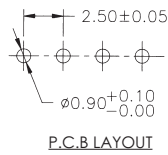
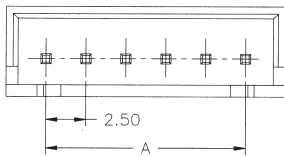
| PART NO.    | Dimensions |       |
|-------------|------------|-------|
|             | A          | B     |
| A2501WV-2P  | 2.50       | 7.50  |
| A2501WV-3P  | 5.00       | 10.00 |
| A2501WV-4P  | 7.50       | 12.50 |
| A2501WV-5P  | 10.00      | 15.00 |
| A2501WV-6P  | 12.50      | 17.50 |
| A2501WV-7P  | 15.00      | 20.00 |
| A2501WV-8P  | 17.50      | 22.50 |
| A2501WV-9P  | 20.00      | 25.00 |
| A2501WV-10P | 22.50      | 27.50 |
| A2501WV-11P | 25.00      | 30.00 |
| A2501WV-12P | 27.50      | 32.50 |
| A2501WV-13P | 30.00      | 35.00 |
| A2501WV-14P | 32.50      | 37.50 |
| A2501WV-15P | 35.00      | 40.00 |
| A2501WV-16P | 37.50      | 42.50 |
| A2501WV-17P | 40.00      | 45.00 |
| A2501WV-18P | 42.50      | 47.50 |
| A2501WV-19P | 45.00      | 50.00 |
| A2501WV-20P | 47.50      | 52.50 |

Unit:mm

### Ordering Information:

A2501WV-XP - \*

1. Part No.  
2. Style:
- |        |   |
|--------|---|
| 1-Type | 1 |
| 2-Type | 2 |
| 3-Type | 3 |



TYPE 1

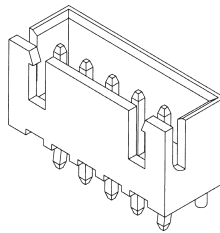


## A2501 WV-F

2.50mm pitch 180° Wafer - With Boss

### Reference Informations:

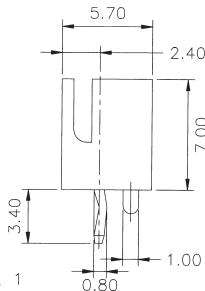
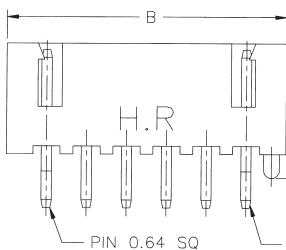
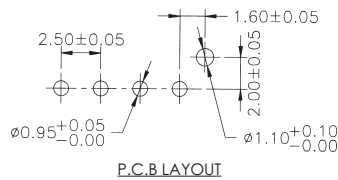
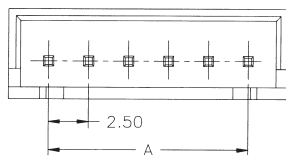
- \*Material: Pin: Brass/Tin-plated  
Wafer: Nylon 66,UL94V-0
- \*Mates with H.R A2501 series Housing
- \*Nylon 46 is available



### Ordering Information & Dimensions:

| PART NO.      | Dimensions |       |
|---------------|------------|-------|
|               | A          | B     |
| A2501WV-F-2P  | 2.50       | 7.50  |
| A2501WV-F-3P  | 5.00       | 10.00 |
| A2501WV-F-4P  | 7.50       | 12.50 |
| A2501WV-F-5P  | 10.00      | 15.00 |
| A2501WV-F-6P  | 12.50      | 17.50 |
| A2501WV-F-7P  | 15.00      | 20.00 |
| A2501WV-F-8P  | 17.50      | 22.50 |
| A2501WV-F-9P  | 20.00      | 25.00 |
| A2501WV-F-10P | 22.50      | 27.50 |
| A2501WV-F-11P | 25.00      | 30.00 |
| A2501WV-F-12P | 27.50      | 32.50 |
| A2501WV-F-13P | 30.00      | 35.00 |
| A2501WV-F-14P | 32.50      | 37.50 |
| A2501WV-F-15P | 35.00      | 40.00 |
| A2501WV-F-16P | 37.50      | 42.50 |
| A2501WV-F-17P | 40.00      | 45.00 |
| A2501WV-F-18P | 42.50      | 47.50 |
| A2501WV-F-19P | 45.00      | 50.00 |
| A2501WV-F-20P | 47.50      | 52.50 |

Unit:mm



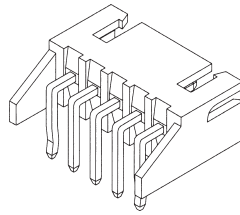


### A2501WR

2.50mm pitch 90° Wafer

#### Reference Informations:

- \*Material: Pin: Brass/Tin-plated  
Wafer: Nylon 66,UL94V-0
- \*Mates with H.R A2501 series Housing
- \*Nylon 46 is available



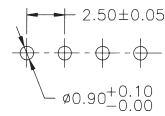
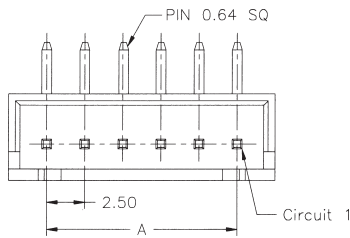
Ordering Information:

A2501WR-XP - \*  
1                    2

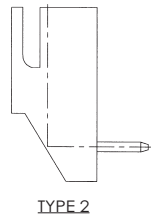
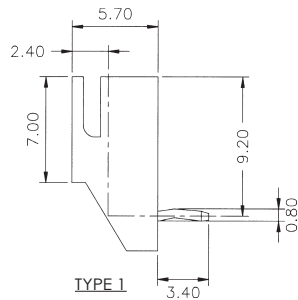
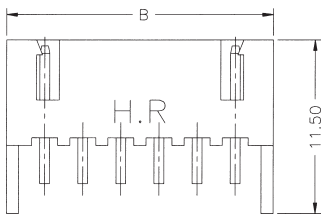
1.Part No.

2.Style:

- 1-Type 1
- 2-Type 2



P.C.B LAYOUT



TYPE 2

TYPE 1

#### Ordering Information & Dimensions:

| PART NO.    | Dimensions |       |
|-------------|------------|-------|
|             | A          | B     |
| A2501WR-2P  | 2.50       | 7.50  |
| A2501WR-3P  | 5.00       | 10.00 |
| A2501WR-4P  | 7.50       | 12.50 |
| A2501WR-5P  | 10.00      | 15.00 |
| A2501WR-6P  | 12.50      | 17.50 |
| A2501WR-7P  | 15.00      | 20.00 |
| A2501WR-8P  | 17.50      | 22.50 |
| A2501WR-9P  | 20.00      | 25.00 |
| A2501WR-10P | 22.50      | 27.50 |
| A2501WR-11P | 25.00      | 30.00 |
| A2501WR-12P | 27.50      | 32.50 |
| A2501WR-13P | 30.00      | 35.00 |
| A2501WR-14P | 32.50      | 37.50 |
| A2501WR-15P | 35.00      | 40.00 |
| A2501WR-16P | 37.50      | 42.50 |
| A2501WR-17P | 40.00      | 45.00 |
| A2501WR-18P | 42.50      | 47.50 |
| A2501WR-19P | 45.00      | 50.00 |
| A2501WR-20P | 47.50      | 52.50 |

Unit:mm

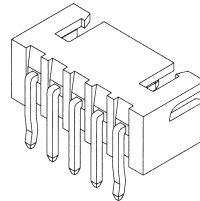


### A2501WVR

2.50mm pitch 90° Wafer

#### Reference Informations:

- \*Material: Pin: Brass/Tin-plated  
Wafer: Nylon 66,UL94V-0
- \*Mates with H.R A2501 series Housing
- \*Nylon 46 is available



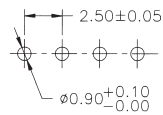
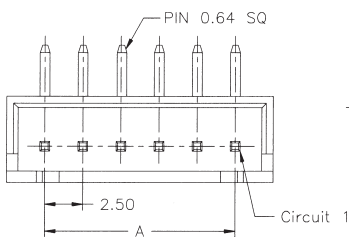
Ordering Information:

A2501WVR-XP - \*  
1                    2

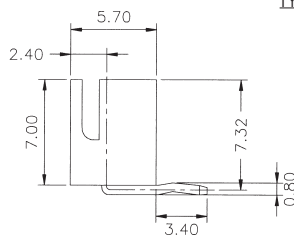
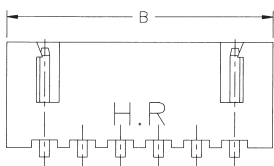
1.Part No.

2.Style:

- 1-Type 1
- 2-Type 2



P.C.B LAYOUT



TYPE 2

TYPE 1

#### Ordering Information & Dimensions:

| PART NO.     | Dimensions |       |
|--------------|------------|-------|
|              | A          | B     |
| A2501WVR-2P  | 2.50       | 7.50  |
| A2501WVR-3P  | 5.00       | 10.00 |
| A2501WVR-4P  | 7.50       | 12.50 |
| A2501WVR-5P  | 10.00      | 15.00 |
| A2501WVR-6P  | 12.50      | 17.50 |
| A2501WVR-7P  | 15.00      | 20.00 |
| A2501WVR-8P  | 17.50      | 22.50 |
| A2501WVR-9P  | 20.00      | 25.00 |
| A2501WVR-10P | 22.50      | 27.50 |
| A2501WVR-11P | 25.00      | 30.00 |
| A2501WVR-12P | 27.50      | 32.50 |
| A2501WVR-13P | 30.00      | 35.00 |
| A2501WVR-14P | 32.50      | 37.50 |
| A2501WVR-15P | 35.00      | 40.00 |
| A2501WVR-16P | 37.50      | 42.50 |
| A2501WVR-17P | 40.00      | 45.00 |
| A2501WVR-18P | 42.50      | 47.50 |
| A2501WVR-19P | 45.00      | 50.00 |
| A2501WVR-20P | 47.50      | 52.50 |

Unit:mm