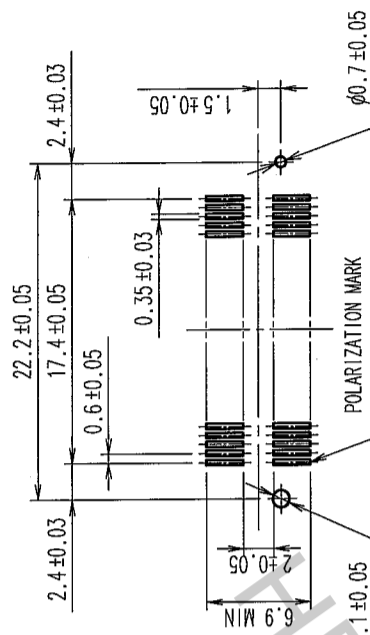
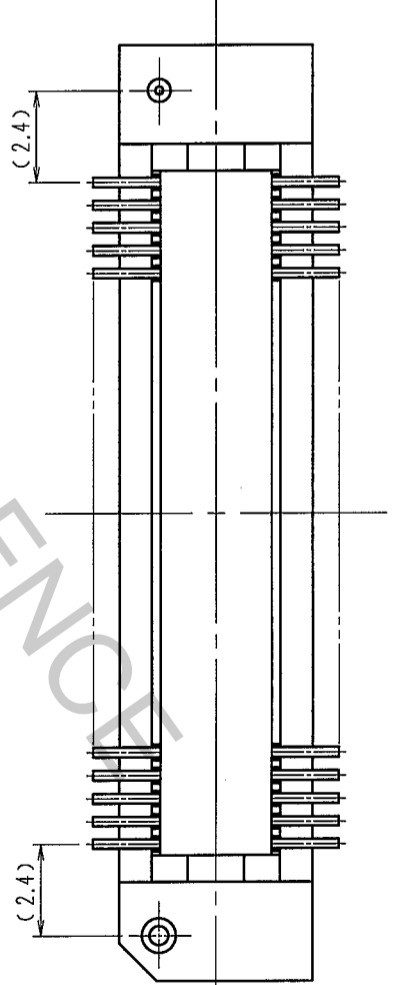
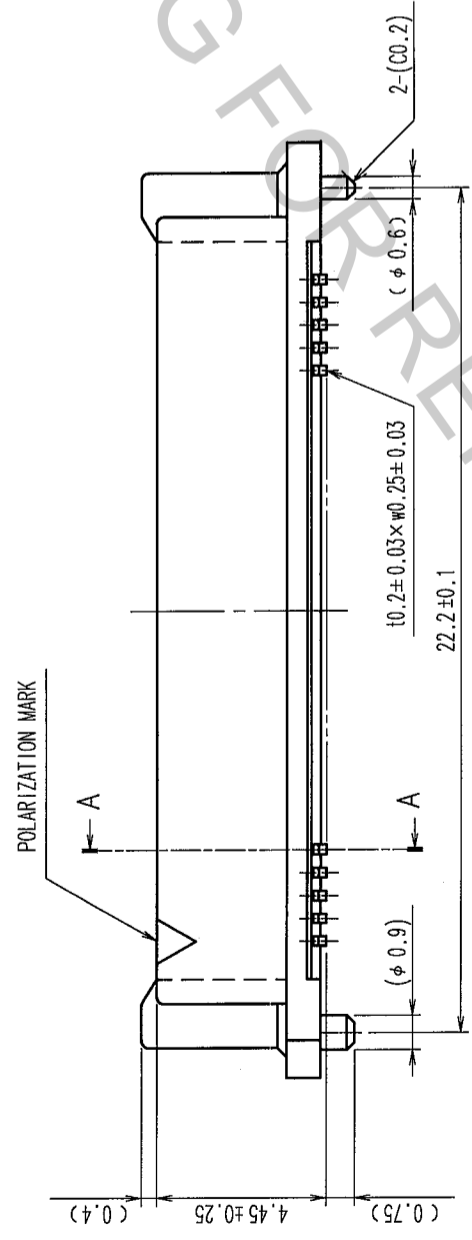
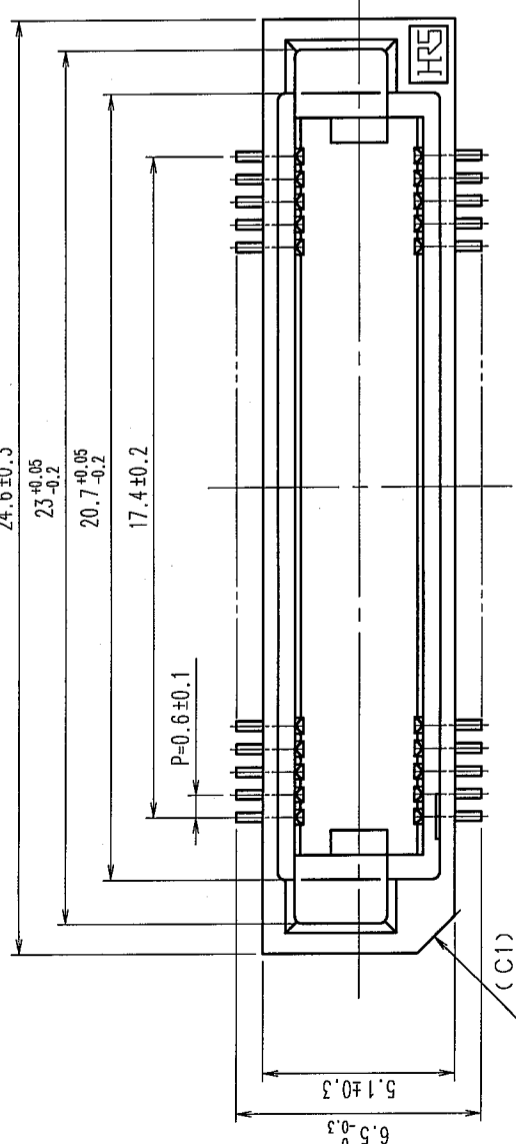
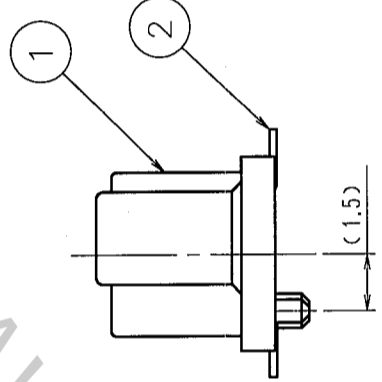
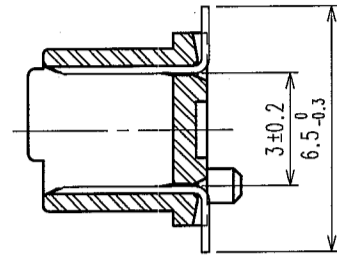


COUNT	DESCRIPTION OF REVISIONS	BY	CHKD	DATE	COUNT	DESCRIPTION OF REVISIONS	BY	CHKD	DATE
△					△				
△					△				
△					△				

RECOMMENDED LAND PATTERN DIMENSION OF PCB (MOUNTING SIDE) (2:1)



A-A

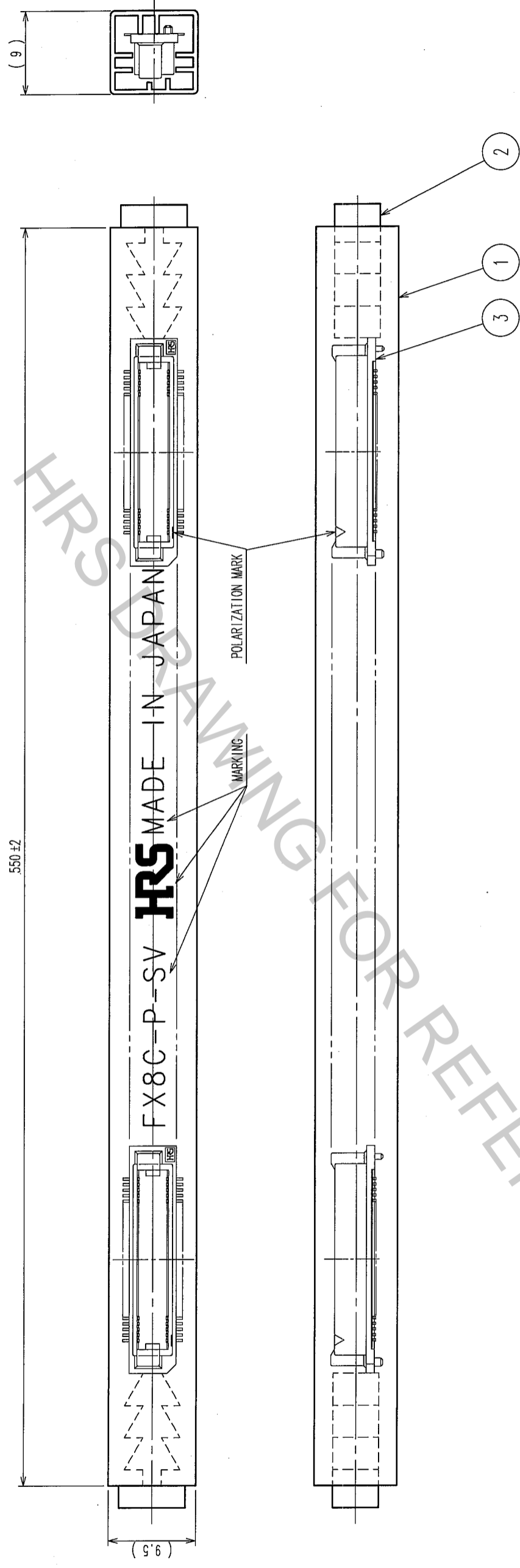


NOTE. 1. LEAD CO-PLANARITY SHALL BE 0.1mm MAX.  
 2. TUBE PACKAGING SHALL BE APPLIED FOR THIS PRODUCT.  
 SEE NEXT PAGE FOR DETAILS.  
 3. FOR MODIFICATION, ETC., PREVENTIVE HOLE FOR SINK MARK MAY BE ADDED ACCORDING TO CIRCUMSTANCES.  
 4. THE DIMENSIONS IN PARENTHESES ARE FOR REFERENCE.

1	PPS	LIGHT BROWN (UL94V-0)	2	PHOSPHOR BRONZE	CONTACT AREA: GOLD 0.1μm min. LEAD AREA: GOLD FLASH
NO.	MATERIAL	FINISH, REMARKS	NO.	MATERIAL	UNDER PLATING: NICKEL 0.5μm min.
CODE NO. (COLD) CL			DESIGNED	CHECKED	APPROVED
			K. NAKAMURA	K. NAKAMURA	H. Okawa
			05.12.09	05.12.09	'05.12.12
DRAWING NO. EDC3-150821-21			PART NO. FX8C-60P-SV(91)		
SCALE 5:1	HIROSE ELECTRIC CO., LTD.				
UNITS mm	CODE NO. CL578-0501-9-91				
	FORM NO. 229				

TO	
PCK	

COUNT	DESCRIPTION OF REVISIONS	BY	CHKD	DATE	COUNT	DESCRIPTION OF REVISIONS	BY	CHKD	DATE
△					△				
△					△				
△					△				



NOTE 1. 1 TUBE : 21 CONNECTORS.  
 2. THE DIMENSIONS IN PARENTHESSES ARE FOR REFERENCE.

2 POLYVINYL CHLORIDE ( STOPPER )		3 ( CONNECTOR )			
NO.	MATERIAL	FINISH, REMARKS	NO.	MATERIAL	FINISH, REMARKS
1	POLYVINYL CHLORIDE	( TUBE )	1	POLYVINYL CHLORIDE	( TUBE )
CODE NO. ( OLD )		DRAWN		DESIGNED	
CL		K. NAKAMURA		K. NAKAMURA	
		05.12.09		05.12.09	
				05.12.12	
				H. Okawa	
				05.12.12	
DRAWING NO.		PART NO.		RELEASED	
EDC3-150821-21		FX8C-60P-SV (91)			
SCALE	FREE	HIROSE ELECTRIC CO., LTD		CODE NO.	
UNITS	MM	HRS		CL578-0501-9-91	
				2	

TO	
PCK	