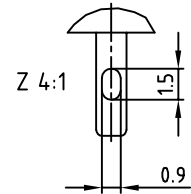
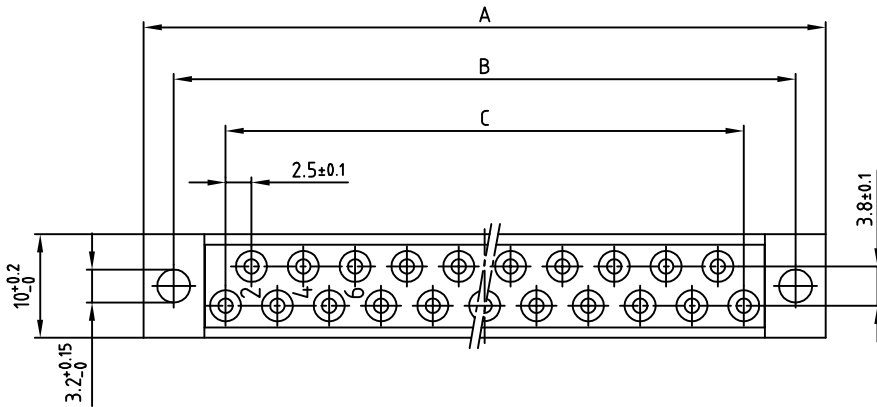
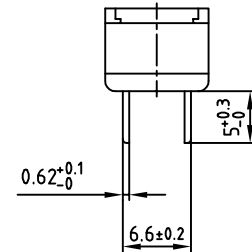
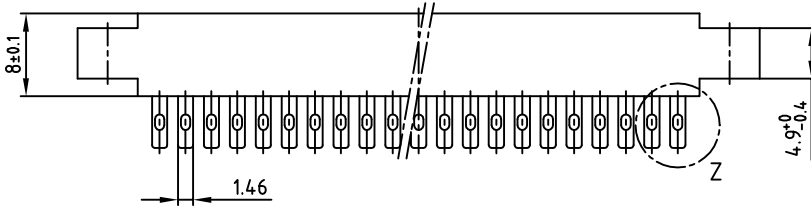


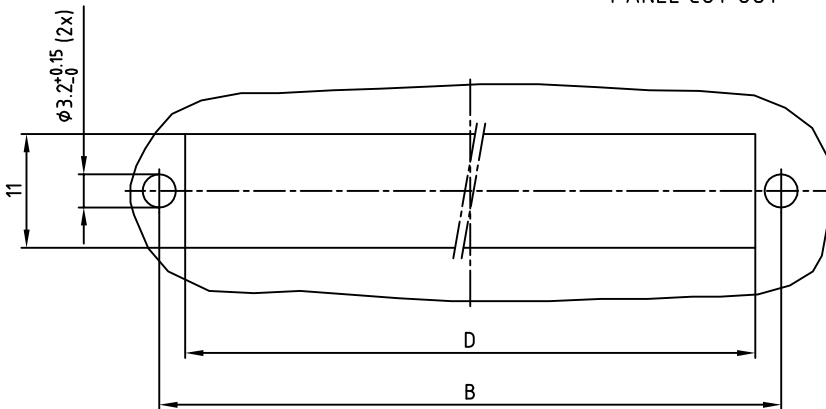
used for: DIN 41617

Part-No.	No. of pos.	A -0.3	B ± 0.1	C ± 0.1	D
102E10019X	13	45.8	40	12x2.5=30	35
102E10029X	21	65.8	60	20x2.5=50	55
102E10039X	31	90.8	85	30x2.5=75	80



Directive 2002/95/EC
"RoHS"
Compliant

PANEL CUT OUT



NOTES:

- INSULATOR: PC GF UL 94 V-1, GREY
- CONTACTS: COPPER ALLOY
PLATING: HARD SILVER PLATED
500 MATING CYCLES
- CONNECTOR IS PART MARKED: PART-NO. CONEC ABC

APPROVAL # FREIGABE # DEBLOCAGE # AUTORIZACION # APPROVAL

CUSTOMER APPROVAL DATE:

NAME: TITLE:

COMPANY NAME:

APPROVAL # FREIGABE # DEBLOCAGE # AUTORIZACION # APPROVAL

THIS DRAWING MAY NOT BE COPIED OR REPRODUCED IN ANY WAY, AND MAY NOT BE PASSED ON TO A THIRD PARTY, WITHOUT WRITTEN PERMISSION. OWNERSHIP AND COPYRIGHT OF CONEC GmbH DO NOT ALTER CAD DRAWING BY HAND

rev.	description	date	name
a	Origin		

tolerance dim. in mm

2008	date	name
drawn	20.08.	Sonnenberg
appd.	20.08.	Mickenbecker
norm	DIN 41617	
d-old		

CONEC

scale: 2:1 (4:1)

material: SEE NOTES

title: FEMALE CONNECTOR
13-31pos. / 2,5mm
with solder termination

dwg no: AutoCAD 2006 DIN-A
10K2A015 3 sh: 1/1

part no: SEE TABLE